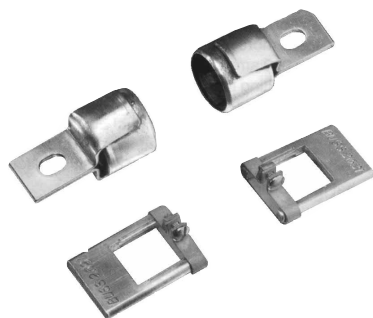


Class H, J, K, & R Fuse Reducers

REDUCERS



CATALOG SYMBOL: CLASS H, J, K, & R
 FUSE REDUCERS
 U.L. LISTED
 (GUIDE # IZZR, FILE #E12853)
 CSA CERTIFIED
 (CLASS 6225-01, FILE #47235)

- Fuse reducers install in fuse clips designed to permit the installation of smaller size fuses than those for which the clips are introduced.
- Reducers will fit into any panel or switch including the dead-front type.
- Strong contact is maintained both mechanically and electrically.
- U.L. listed.
- There are no reducers to go from 250V to 600V.
- There are no reducers for switching from one Class to another.
- There are no reducers for Class T or Class L fuses.

Fuse Reducers for Class J Dimension Fuses- LPJ, JKS.

Fuse Size	Desired Size	Catalog No. (Pair) Reducer No.	*Carton Weight (Lbs.)
30A	60A	J-63	0.38
30A	60A	J-13	1.73
60A	100A	J-16	1.85
60A	200A	J-26	2.55
100A	†200A	J-21	1.36
100A	†400A	J-41	4.90
200A	†400A	J-42	2.75
200A	600A	J-62	1.80
400A	†600A	J-64	3.55

* Carton quantity — 10 pair. † Not for Bolt-on Applications.

Fuse Reducers for Class R Dimension Fuses FRN-R, LPN-RK — FRS-R, LPS-RK.

Fuse Size	Desired Size	Catalog No. (Pairs)	
		250V	600V
30A	60A	No. 263-R	No. 663-R
30A	100A	No. 213-R	No. 216-R
60A		No. 216-R	No. 616-R
60A	200A	No. 226-R	No. 626-R
100A		No. 2621-R	
100A	400A	No. 2641-R	
200A		No. 242-R	No. 642-R
100A	600A	No. 2661-R	
200A		No. 2662-R	
400A		**No. 2664-R	

**Single reducer only (pair not required)

Note: Carton quantity - 10 pair.

Fuse Reducers for Class H & K Dimension Fuses NON, REN — NOS, RES

Fuse Size	Desired Size	Catalog No. (Pairs)		600V Reducer No.	*Carton Weight (Lbs.)
		250V Reducer No.	*Carton Weight (Lbs.)		
30A	60A	No. 263	0.38	No. 663	1.00
30A	100A	No. 213	1.73	No. 216	1.73
60A	100A	No. 216	1.73	No. 616	1.85
60A	200A	No. 226	3.00	No. 626	3.33
100A	200A	No. 2621	1.63	No. 2621	1.63
100A	400A	No. 2641	4.90	No. 2641	4.90
200A	400A	No. 2642	3.50	No. 2642	3.50
100A	600A	No. 2661	8.70	No. 2661	8.70
200A	600A	No. 2662	6.85	No. 2662	6.85
400A	600A	No. 2664	4.45	No. 2664	4.45

* Carton quantity — 10 pair.

The only controlled copy of this BIF document is the electronic read-only version located on the Bussmann Network Drive. All other copies of this BIF document are by definition uncontrolled. This bulletin is intended to clearly present comprehensive product data and provide technical information that will help the end user with design applications. Bussmann reserves the right, without notice, to change design or construction of any products and to discontinue or limit distribution of any products. Bussmann also reserves the right to change or update, without notice, any technical information contained in this bulletin. Once a product has been selected, it should be tested by the user in all possible applications.