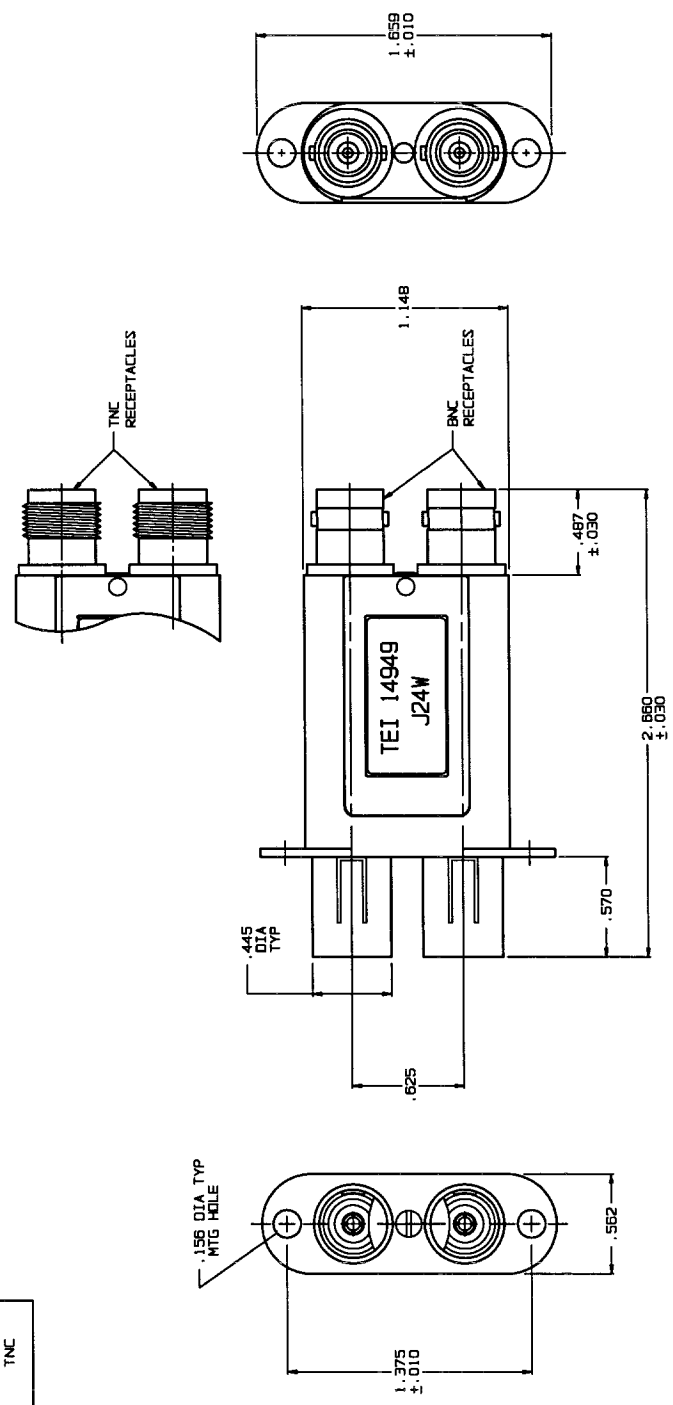


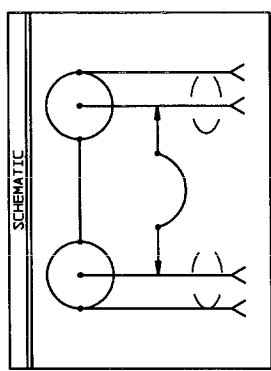
RED INDICATES ORIGINAL

QNG SIZE	C	REV	ED	REVISIONS	1-0505	SH. 1
DATA CONTAINED IN THIS DRAWING IS THE PROPERTY OF TROMPETER ELECTRONICS, INC. AND SHALL NOT BE REPRODUCED, COPIED OR USED IN ANY MANNER WITHOUT THE EXPRESS WRITTEN PERMISSION.		0	11862	ITEM 3 WAS 8-2821;	DMN APPROVED	DATE
				SEE ECO	DKC	4/11/97

MODEL NO.	ACCEPTS PIN DIA.	RECEPTACLE TYPE
J24	.070 RCA	BNC
J24H	.080 AT&T	
J24WH	.070 RCA	TNC
	.080 AT&T	



J24W SHOWN



INCH	MM
.005	0.13
.010	0.25
.030	0.76
.070	1.78
.090	2.20
.156	3.96
.445	11.30
.487	12.37
.562	14.27
.570	14.48
.625	15.88
1.148	29.16
1.375	34.92
1.659	42.14
2.880	67.56

- EXAMPLE OF COMPLETE MODEL NO.: J24W
- BASIC MODEL NO. (SEE TABLE)
- DUAL COAXIAL NORMAL THRU PATCH JACK WITH BNC/TNC RECEPTACLES
- FINISH: TFS-1A (NICKEL)
- ALL DIM ARE IN INCHES

QTY	TOL UNLESS SPECIFIED	DESCRIPTION	PART NUMBER	ITEM
1	.005	TROMPETER	J24/J24W/J24H/J24WH	
	.0004	ELECTRONICS, INC.		
DMN	DKC	3-21-87	MATERIAL	CODE IDENT
ENGR	APPR	14949	14949	1-0505
			SCALE 2:1	DATE 9-17-92
				SHEET 1 OF 2