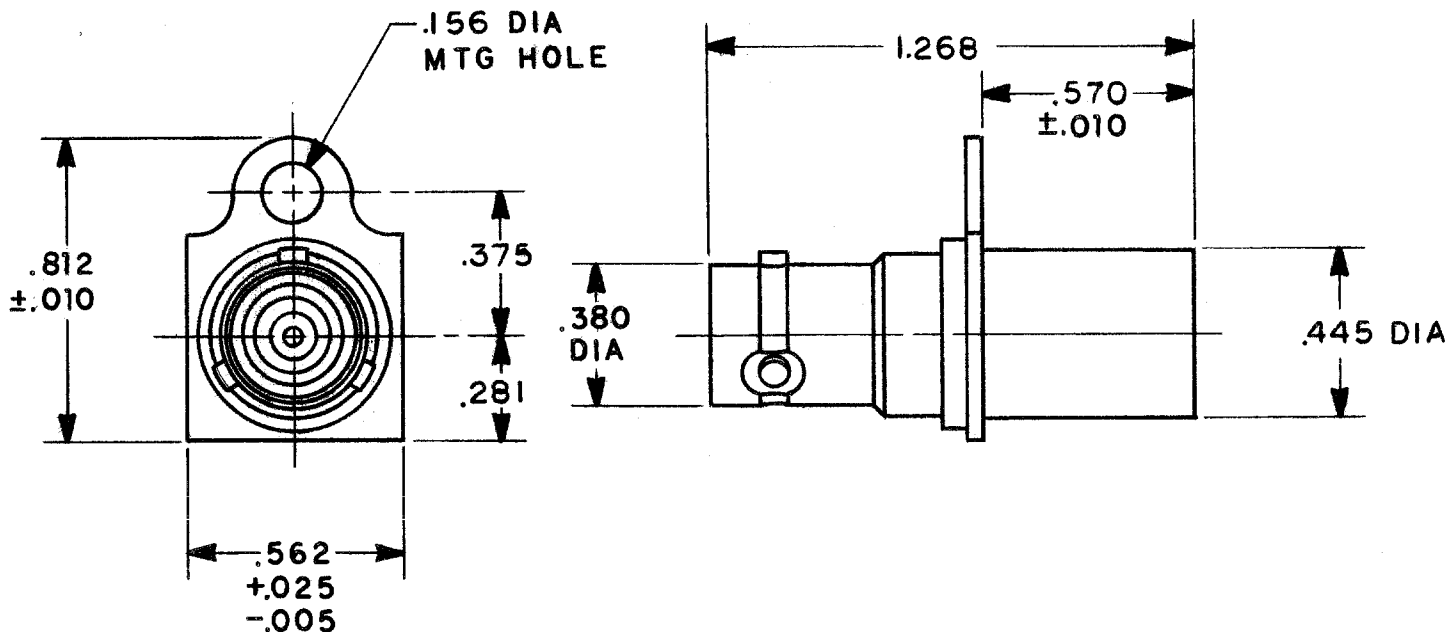


DATA CONTAINED IN THIS DOCUMENT IS PROPRIETARY TO TROMPETER ELECTRONICS INC. AND SHALL NOT BE DISCLOSED, COPIED OR USED FOR PROCUREMENT OR MANUFACTURE WITHOUT EXPRESS WRITTEN PERMISSION.

REVISIONS			3-0005 SH 1		
REV	EO	DESCRIPTION	DWN	APPROVED	DATE
C	5814	REV & REDWN	BAT	<i>BTW</i>	7-12-83
D	8139	REV L/M & DWG NO WAS 3000-0005	DKC	<i>OK; BM</i>	6-29-88
E	8218	DIM .570 WAS .550	DJK	<i>OK; BM; DJK</i>	12-15-88

INCH	MM
.005	0.13
.010	0.25
.025	0.64
.156	3.96
.281	7.14
.375	9.53
.380	9.65
.445	11.30
.562	14.27
.570	14.48
.812	20.62
1.268	32.21



3. CONCENTRIC TWINAX / TRIAX PATCH JACK WITH TRB REAR ENTRY

2. FINISH: TFS-1A (NICKEL)

1. ALL DIM ARE IN INCHES

155-0557	
155-0511	
155-0475	
NEXT ASSY	

QTY	DESCRIPTION		PART NUMBER	ITEM
	TOL UNLESS SPECIFIED .XX ± .XXX ± .005 .XXXX ± ANGLES ±		<b>TROMPETER ELECTRONICS, INC.</b>	
	DWN <b>BAT</b> 2-18-83		MATERIAL	CODE IDENT
	CHK <i>B</i> 3-7-83		—	<b>14949</b>
	ENGR <i>TW</i> 7-11-83		DRAWING NO.	REV
	APPR <i>JF</i> 7-12-83		3-0005	E
SCALE 2/1			DATE 12-9-66	SHEET 1 OF 2