

# Quick Mount Relay Sockets

## JRS 2 Pole / 10 Amp / Size 16

### Operating Range

**Temperature:**

-65°C to 125°C

**Insulation Resistance:**

1000 Megaohms Min.

**Dielectric Withstanding Voltage:**

1500 VRMS at Sea Level

500 VRMS at 80,000 ft.

**Vibration:**

MIL-STD-202, Method 204

Test Condition G

**Shock:**

MIL-STD-213, Method 213

Test Condition C

### Materials

**Socket Body:**

Polythermide per ASTM-D5205

**Grommet:**

Silicone Rubber per A-A-59588

**Contact Retainers:**

Stainless Steel

**Internal Socket Contacts:**

Copper Alloy, Hard Gold Finish per SAE-AMS-2422

## Quick Mount Relay Sockets

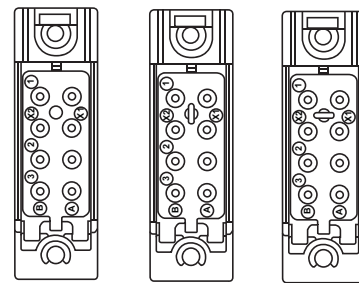


Replaces MIL-PRF-12883/41  
Mates with M83536 Relays

### Extended Height Relay Sockets

APCD P/N	QTY	Size <sup>1</sup>	Contact	Mating Relay	Configuration
JRS200100	8	16/16	/92-533	M83536	A
JRS200200	8	16/16	/92-533	M83536	B
JRS200300	8	16/16	/92-533	M83536	C

### Socket Configurations



A

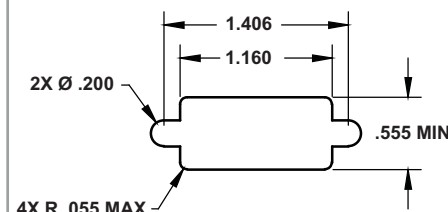
B

C

### Relay Socket Weight

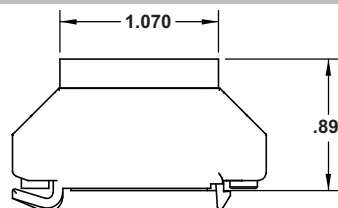
Relay Socket	Pounds	Grams
Low Profile	.042	19

### Required Mounting Panel Cutout

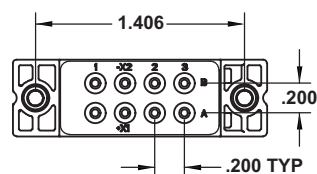


### Relay Socket Dimensions

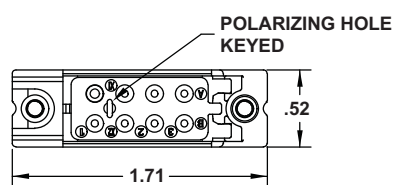
#### Side View



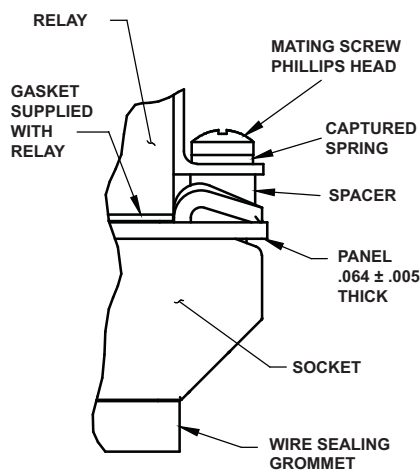
#### Top View



#### Bottom View



### Mounting Hardware



### Part Number Instructions

APCD P/N	Hardware	Contacts
JRS200100	NONE	NONE
JRS200101	NONE	YES
JRS200110	YES	NONE
JRS200111	YES	YES

Amphenol Pcd