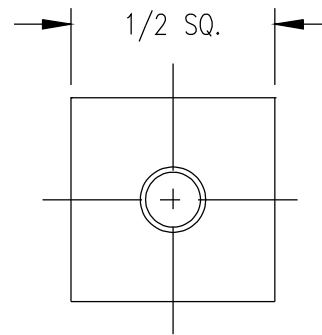
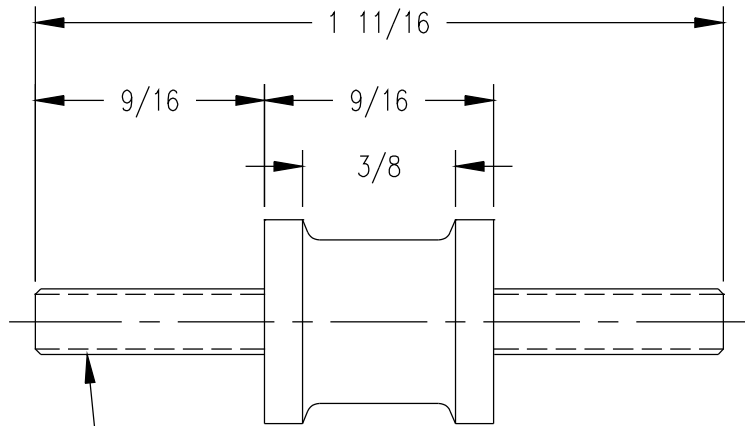


DASH NO.	M CODE	MADE FROM	K-2945-6
----------	--------	-----------	----------

REVISIONS	
ISSUE	CHANGES
4	CN 34449 C REDRAWN KH 08/06/93
KAM2975	



#8-32 NC-2A TH'D
RETHREAD AT KINGS
BEFORE PLATING PITCH DIA. MAX. .1421
MIN. .1394

NOTES:

1. SCREWS TO BE STEEL, BODY TO BE RUBBER.
2. U.S. RUBBER PART NO. 323 B.
3. MARK PACKAGE: KINGS PART NO. K-2945-6

★ CRITICAL DIMENSIONS

UNLESS OTHERWISE SPECIFIED:

- | | | |
|---|---|--|
| 1. TOLERANCES: FRACTIONS & 2 PLACE DECIMALS ± .010
3 PLACE DECIMALS ± .004 ANGLES ± 0° 30'
T.I.R. CONCENTRICITY OF ANY 2 DIAMETERS MAY NOT EXCEED HALF THE SUM OF THEIR TOLERANCES. | 2. REMOVE ALL BURRS, BREAK SHARP EDGES .005 MAX.
3. NO FILLETS PERMITTED.
4. SURFACE ROUGHNESS 63 MICRO-INCHES RMS MAX. | 5. ALL DIMENSIONS PRIOR TO PLATING.
6. ALL PLATING IN ACCORDANCE WITH KER 10004.
7. ALL LEAD THREADS TO BE CHAMFERED 45° TO ROOT DIAMETER. |
|---|---|--|

SCALE	2:1	
APPROX SURFACE AREA		
USED ON		
REF:		
MOUNT		
DRAWN	KH	DATE 08/06/93
DESIGN	GA	DATE 08/09/93
APPR.		DATE

KINGS
ELECTRONICS CO., INC.
TUCKAHOE, NEW YORK 10707

K-2945-6