



## DC POWER CONNECTORS: KLDX Series

### PCB Mount DC Power Jack

#### Product Features

- 2.0mm and 2.5mm
- Built-In DC On/Off Switch
- Laptop and Palm Computers, Portable Modems, Radar Detectors, and Other Portable Device Applications
- CSA/NRTL Certified File No. LR78160
- UL File No. E140125

#### Performance Specifications

##### Materials and Finish

- Plastic Housing:** PBT, UL94V-0 Rated, Black Color
- Center Pin:** Copper Alloy, Nickel Plated
- Contact #1 and #3:** Brass, Tin Plated
- Contact #2:** Phosphor Bronze, Tin Plated

#### Electrical Characteristics

##### Contact Resistance

##### Before Durability Test

**Between Terminals:** 30 milliohms Max.

**Plug to Contacts:** 50 milliohms Max.

##### After Durability Test

**Between Terminals:** 60 milliohms Max.

**Plug to Contacts:** 100 milliohms Max.

**Rated Voltage:** 24V DC

**Rated Current:** 3.5A

**Insulation Resistance:** 100 Megohms Min. at 500V DC

**Dielectric Withstanding Voltage:** 500V AC RMS for 1 Minute

#### Mechanical Characteristics

**Durability Test:** 5000 Cycles

**Insertion Force:** 0.3kg - 2.5kg

**Extraction Force:** 0.3kg - 2.5kg

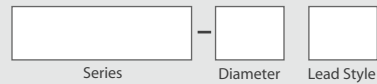
**Operating Temperature:** -25°C to +85°C

|                       |                     |                      |                  |
|-----------------------|---------------------|----------------------|------------------|
| 2D Drawing            | IGES                | STEP                 | 3D PDF           |
| Solder Profile        | CofC RoHS Compliant | CofC REACH Compliant | UL Plastic File  |
| Certificate of Origin | Check Stock         | Request a Sample     | Send Us An Email |

Generated Part Number



Part Number Builder



#### Series

**KLDX-0202** - PCB Mount DC Power Jack

#### Diameter

- A** - 2.0mm Center Pin Diameter
- B** - 2.5mm Center Pin Diameter

#### Lead Style

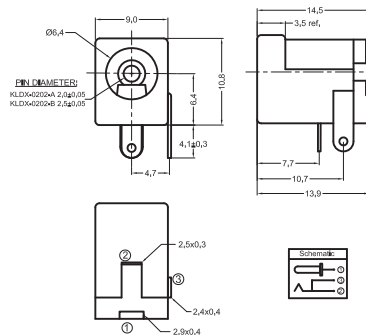
- Blank** - Standard Straight
- C** - Crimped

Contact Kycon For HT Reflow Compatible and Other Options

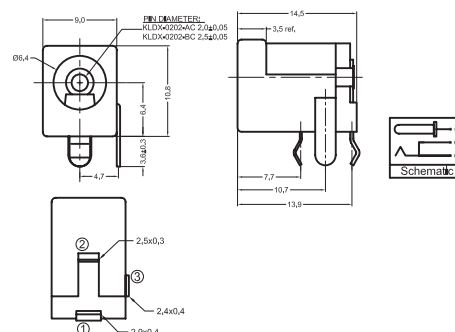
#### KLDX Series

Dimensions in mm

##### KLDX-0202-x



##### KLDX-0202-xC



\*Also available - KLDX-HT Reflow Compatible  
Contact factory for specifications. 888-KYCON-22