

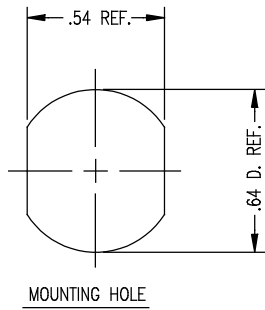
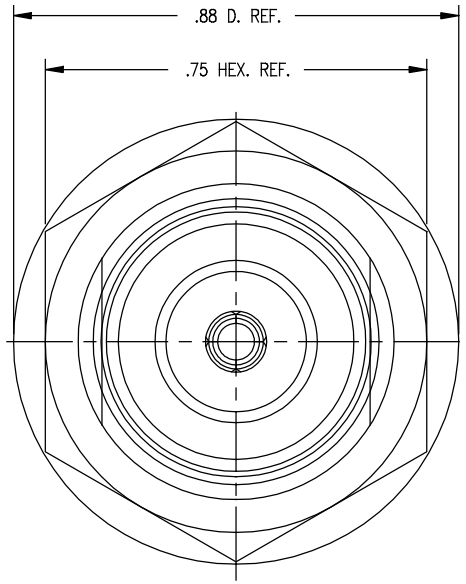
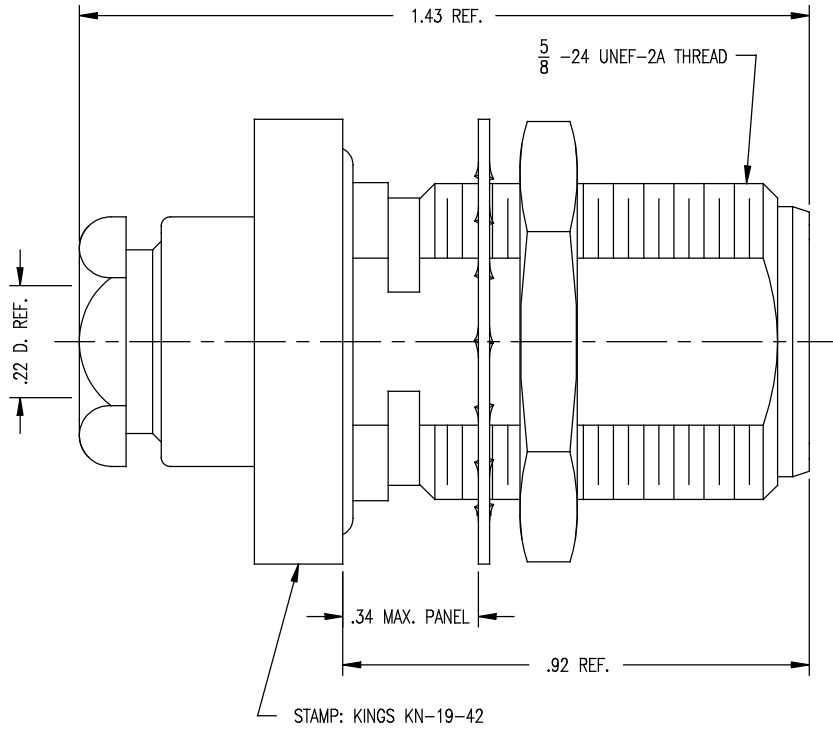
DASH NO.	M CODE	MADE FROM
----------	--------	-----------

GSD

KN-19-42 (SHT 1 OF 2)

REVISIONS	
ISSUE	CHANGES

1	CN 37245 C REDRAWN KH 02/26/97
---	--------------------------------------



MOUNTING HOLE

GSD

- NOTES:
- FOR USE WITH RG-55/U CABLE.
  - FOR CABLING INSTRUCTIONS SEE CP-1021.
  - INTERFACE PER MIL-STD-348, FIG. 304-2.
  - MATERIALS:  
INSULATORS: TEFLON, ASTM-D-4894  
GASKET & O-RING: SIL. RUB., ZZ-R-765  
LOCKWASER: PHOS. BRONZE, ASTM-B-103  
CENTER CONTACT: BER. COP., ASTM-B-196  
ALL OTHER PARTS: BRASS, ASTM-B16
  - FINISHES:  
CENTER CONTACT: HARD GOLD PLT. PER MIL-G-45204  
ALL OTHER METAL PARTS: SILVER PLT. PER QQ-S-365
  - ELECTRICAL CHARACTERISTICS:  
NOMINAL IMPEDANCE: 50 OHMS  
VOLTAGE RATING: 1000 VRMS  
FREQUENCY RANGE: DC TO 11GHz

SCALE 4:1	
APPROX SURFACE AREA	
USED ON	
REF:	
JACK, BULKHEAD, N	
DRAWN KH	DATE 02/26/97
DESIGN PB	DATE 02/27/97
APPR.	DATE

**KINGS**  
ELECTRONICS CO., INC.  
TUCKAHOE, NEW YORK 10707

KN-19-42 (SHT 1 OF 2)