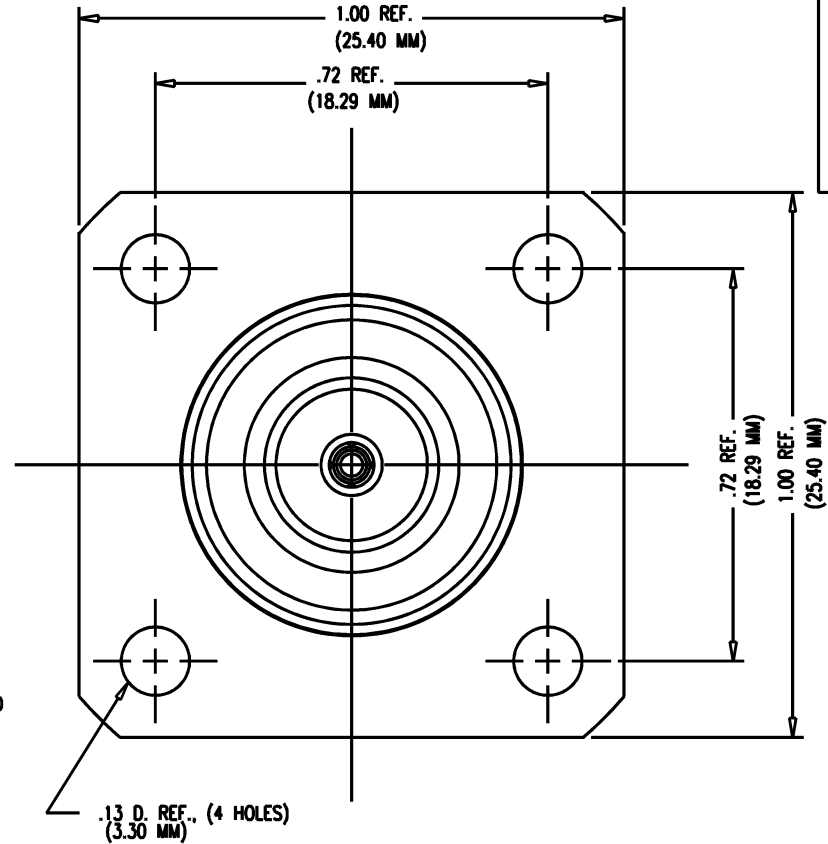
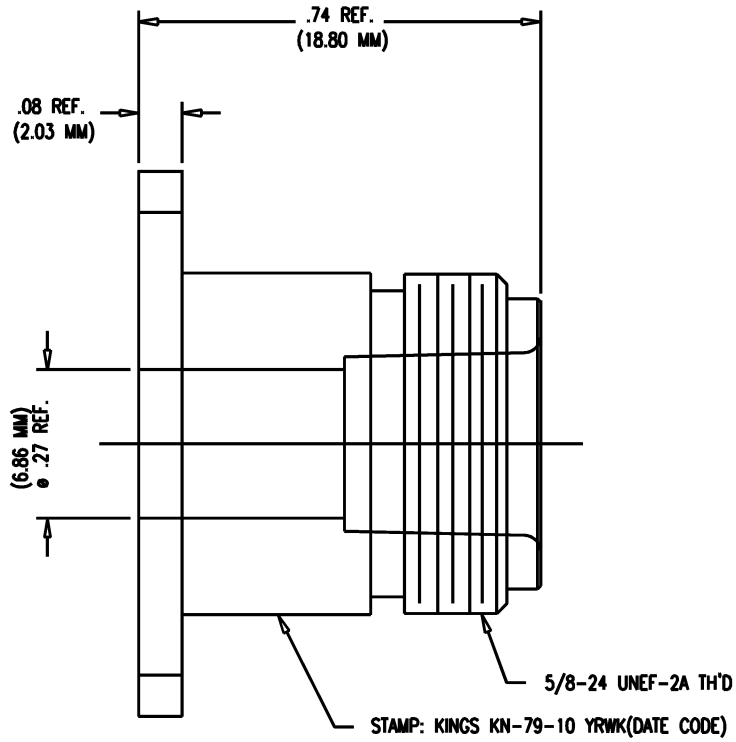


# GSD

KN-79-10

### REVISIONS

ISSUE	CHANGES
3	CN 39383 E REDRAWN DRK 01/04/06



#### NOTES:

1. INTERFACE PER MIL-STD-348, FIG. 304-2. (AS APPLICABLE)
2. MATERIALS:  
BODY: BRASS, ASTM-B16
3. FINISHES:  
SILVER: ASTM-B700

SCALE 4:1

APPROX SURFACE AREA

SPEC. KER 10004

USED ON

REF: MCDONNELL DOUGLAS, STSM1417-005

## DUMMY RECEPTACLE

DRAWN DRK DATE 12/15/05

DESIGN DATE

APPR. DATE

**KINGS**  
ELECTRONICS CO., INC.  
ROCK HILL, SOUTH CAROLINA 29730

# GSD

KN-79-10