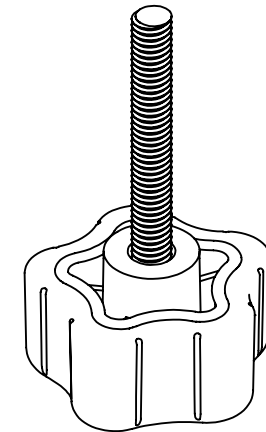
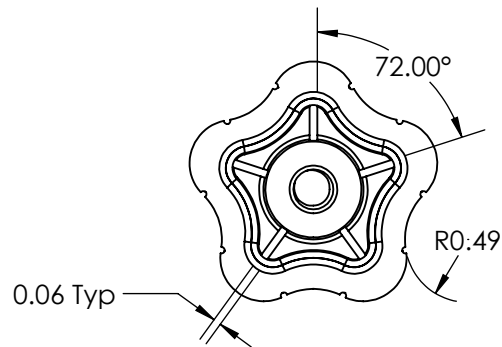
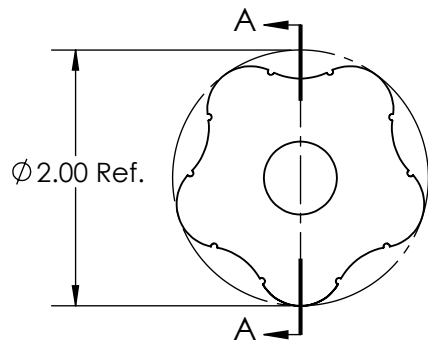


SECTION A-A
SCALE 1 : 1.5



FOR CUSTOMER APPROVAL ONLY				REV	BY	DATE	COMMENT	DIMENSIONS ARE IN INCHES TOLERANCES FRACTIONAL ± TWO PLACE DECIMAL ± 0.03 THREE PLACE DECIMAL ± 0.010 UNLESS OTHERWISE NOTED	DRAWN	VRR	INNOVATIVE COMPONENTS PART NAME 1.89" Soft Tall Star Knob, 5/16-18 X 2.25" Steel, Zinc Stud
NAME:	0	VRR	02/05/16	RELEASE DATE			APPROVED		LQR		
TITLE:							DATE		02/05/2016		
DATE:	PROPRIETARY AND CONFIDENTIAL THE INFORMATION CONTAINED IN THIS DRAWING IS THE SOLE PROPERTY OF INNOVATIVE COMPONENTS. ANY REPRODUCTION IN PART OR AS A WHOLE WITHOUT THE WRITTEN PERMISSION OF INNOVATIVE COMPONENTS IS PROHIBITED.								COMMENTS		
SIGNATURE:									MIN. TORQUE N/A in.-lbs.		
								KNOB MATERIAL	INSERT MATERIAL	PART NUMBER	DRAWING NUMBER
								TPE-48 SHORE A	Steel	KN5C2250R5--S21	02-09-16 R0
								KNOB FINISH	INSERT FINISH	SCALE 1:1.5	SHEET 1 OF 1
								INSERT PART NUMBER	Zinc		
								KN5C2250R3I--21			

