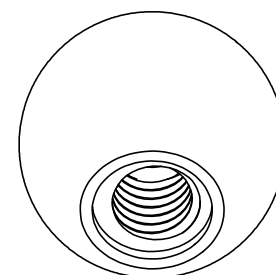
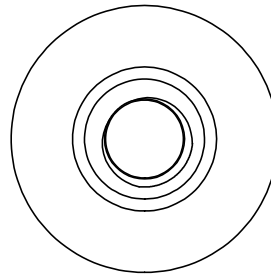
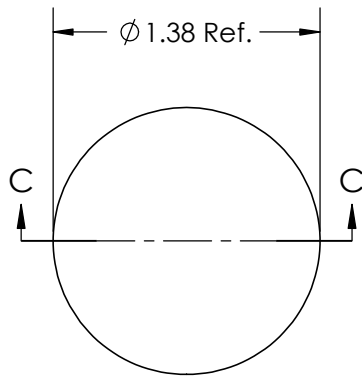


SECTION C-C



FOR CUSTOMER APPROVAL ONLY		REV	BY	DATE	COMMENT	DIMENSIONS ARE IN INCHES TOLERANCES FRACTIONAL ± TWO PLACE DECIMAL ± 0.03 THREE PLACE DECIMAL ± 0.010 UNLESS OTHERWISE NOTED	DRAWN	VRR						
NAME:	0	MTO	12/09/92	RELEASE DATE	APPROVED		LQR	DATE		03/14/2018				
TITLE:	1	COR	09/06/11	Into Changed SolidWorks Format	COMMENTS		Material Usage: 0.03135 Pounds			PART NAME	1.38" Ball Knob 1/2-13 Steel, Zinc Nylon Insert			
	2	VRR	10/07/14	Added Signature Box			PROPRIETARY AND CONFIDENTIAL THE INFORMATION CONTAINED IN THIS DRAWING IS THE SOLE PROPERTY OF INNOVATIVE COMPONENTS. ANY REPRODUCTION IN PART OR AS A WHOLE WITHOUT THE WRITTEN PERMISSION OF INNOVATIVE COMPONENTS IS PROHIBITED.	KNOB MATERIAL				Polypropylene, Black	INSERT MATERIAL	Steel
DATE:	3	HOB	03/08/18	Adjusted Bury Dimension	KNOB FINISH	Textured		INSERT PART NUMBER	SN8CNE-----21	INSERT FINISH	Zinc	PART NUMBER	KN8C----B3-L-21	DRAWING NUMBER
SIGNATURE:											SCALE 1:1		SHEET 1 OF 1	



PLASTIC KNOBS / CONTROL KNOBS / HANDLES / QUICK RELEASE PINS & BALL LOCK PINS
 SPRING LOADED PINS & PLUNGERS / WIRE ROPE LANYARDS / THREAD IDENTIFIERS