

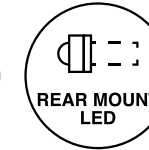
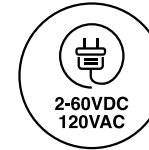
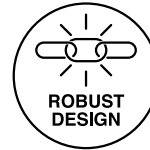


L6 Series

Ø.250 (6.35mm) Snap-in T-1 3/4 LED Panel Mount Indicator, IP66 Sealed



Rear mounting, friction fit no mounting hardware required, IP66 sealed suitable for outdoor applications



Applications

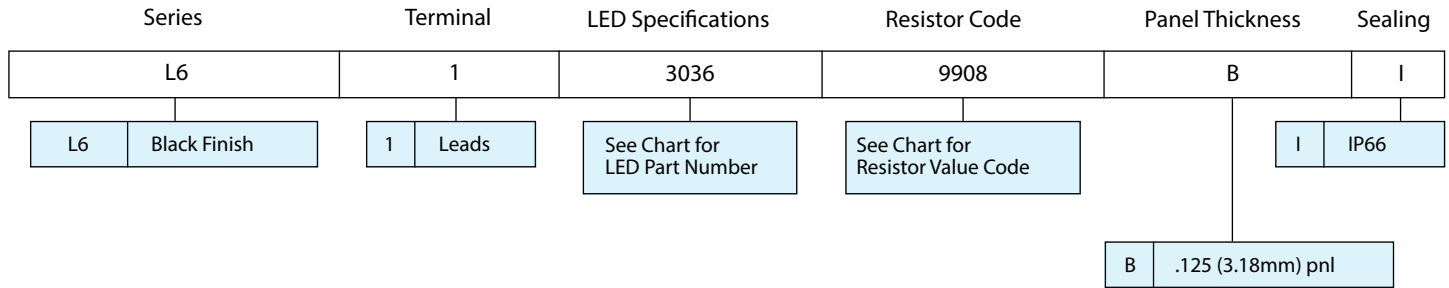
- Pilot Instrumentation
- Status Maintenance
- Maintenance and Warning Indication
- Signaling
- Remote Power Indication
- Main Power Indication
- Safety and Emergency
- Aircraft/Military Instrumentation
- Maritime, Oil and Gas Industry

Key Features

- Mounting hole diameter: .250 ± .001 (6.35mm ± 0.03mm)
- Panel thickness: .125 (3.18mm)
- Rear mounting friction fit - no mounting hardware required
- T-1 3/4 (5mm) LED panel mount indicator
- Sealed against moisture and dust - IP66
- Optional internal resistor
- Offered with 22 AWG UL1061 6 (152.4mm) gray (anode) and black (cathode) lead stripped .250 (6.35mm) standard
- Black butyrate plastic housing
- Mil Spec MIL-W22759/33 wire and connector options
- Available in six single colors: red, yellow, green, amber, blue, and white
- Viewing angle: 15°-30° (dependent on model)
- For custom cable length, connectors, or single/bi-color LED contact VCC
- RoHS and REACH Compliant



Ordering Data



Example:
L6-1-3036-9908-B-I
 L6 Black Plastic Finish, Wire Leads, Red LED 12VDC, IP66

LED Specification Chart

Electrical and Optical Characteristics (TA = 25°C)

LED Part Numbers	Color	Luminous Intensity (mcd) Typ. @ IF (mA)	VF Typ. @ IF (mA)	Viewing Angle (2θ ^{1/2})	Peak Wavelength (nm)
------------------	-------	---	-------------------	------------------------------------	----------------------

SINGLE COLOR

3056	Red	400.0	20	1.9	20	30°	660
3055	Yellow	400.0	20	2.0	20	30°	590
3054	Green	1200.0	20	3.3	20	30°	515
3057	Blue	640.0	20	3.3	20	20°	468
3061	White	27000.0	20	3.2	20	15°	N/A

SUPER ULTRA BRIGHT

3036	Red	2800.0	20	1.85	20	20°	660
3047	Green	13990	20	3.3	20	20°	515
3048	Amber	1300.0	20	2.02	20	30°	592

Resistor Chart

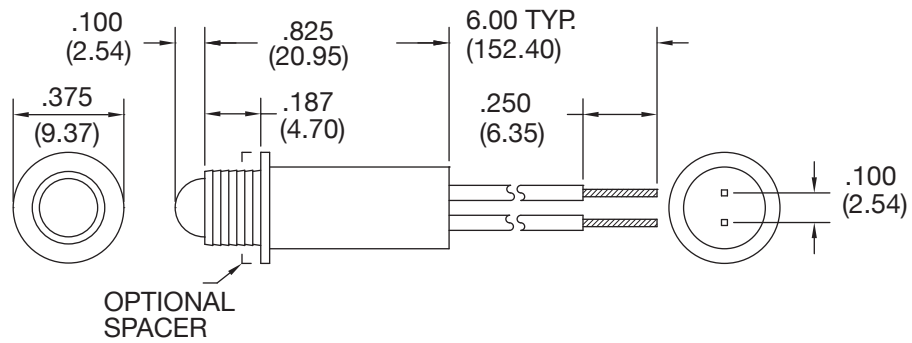
Operating Specification

Resistor Value Code	Voltage	Current (mA)	Resistor Value (Ohms) Green, Yellow Red, Bicolor LED	Resistor Value (Ohms) Blue, White LED
---------------------	---------	--------------	--	---------------------------------------

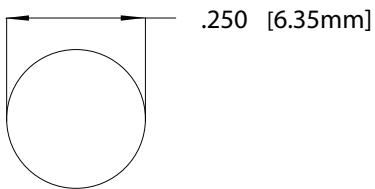
0000	2VDC	20	None	Not Available
9907	5VDC	20	150	
9922	5VDC	20		65
9908	12VDC	20	511	
9909	12VDC	20		357
9910	24VDC	20	1100	
9911	24VDC	20		953
9912	48VDC	9	4870	
9913	48VDC	9		4350
9914	60VDC	7	8250	
9915	60VDC	7		7500
9920	120VAC	8	6490	Contact VCC

Product Dimensions

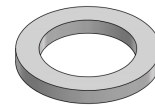
L6 Series



Recommended Mounting Hole



Accessories (Order Separately)



10217
Spacer Option

Notes:

1. All dimensions are in inches [millimeters]
2. Tolerance is $\pm .001$ [0.03] unless otherwise noted.
3. The specifications, characteristics and technical data described in the datasheet are subject to change without prior notice.