

- Free ready to run application firmware available on www.st.com, to support quick evaluation and development

Description

The L99LD21-ADIS discovery board enables you to drive four independent high brightness LED strings for automotive front lighting applications by connecting it to the SPC560B-DIS discovery board, application firmware examples and GUI are available.

Features

- 2 soldered L99LD21 flexible LED drivers
- Board size 100 x 55 mm
- Two extension headers (2 x 36 pin - 100 mil) for quick connection to SPC560B-DIS discovery board
- Controllable by dedicated GUI available on www.st.com

Table 1. Device summary

Order code	Reference
L99LD21-ADIS	L99LD21 expansion board

Contents

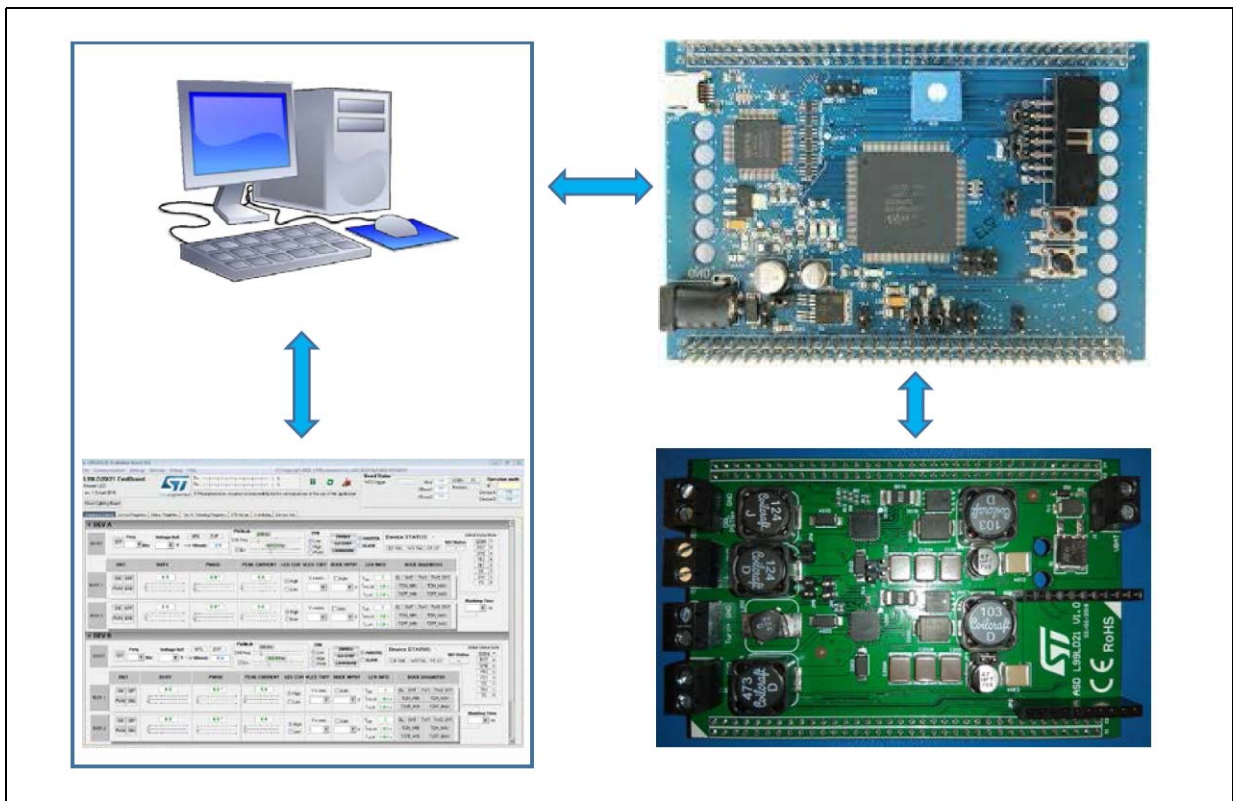
1	System requirements, HW and SW resources	3
1.1	System requirements	3
1.2	Hardware configuration	3
1.3	GUI	3
1.4	Demonstration software	4
2	Revision history	5

1 System requirements, HW and SW resources

1.1 System requirements

- Windows PC (2000, XP, Vista, 7)
- USB type A to mini-B cable
- SPC560B-DIS discovery board
- L99LD21-ADIS board

Figure 1. Complete system



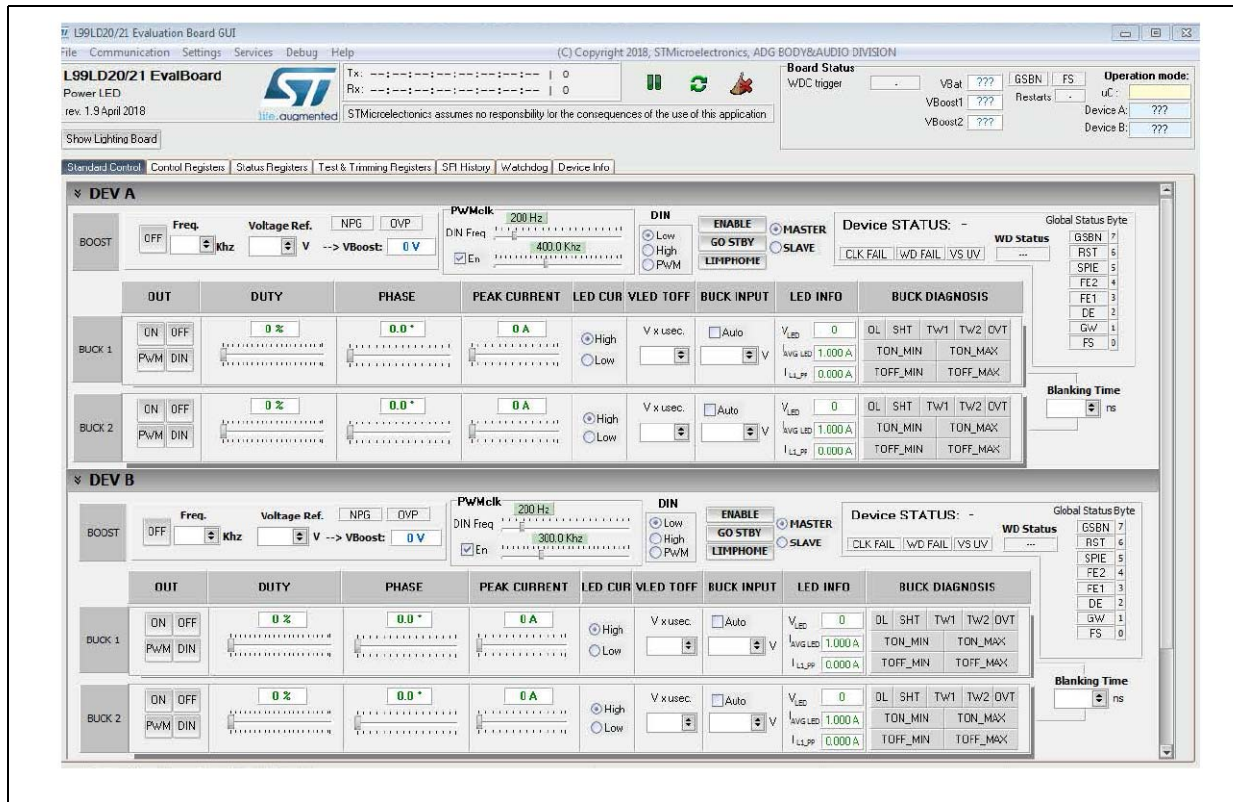
1.2 Hardware configuration

L99LD21-ADIS can be sold stand alone or with microcontroller discovery board SPC560B-DIS. For more information, please refer to ST website www.st.com.

1.3 GUI

GUI is available to control the entire system, that is SPC560B-DIS Discovery board connected with the L99LD21-ADIS application board. For more information, and to download the latest version available, please refer to ST web www.st.com.

Figure 2. GUI interface



1.4 Demonstration software

Firmware is available for easy demonstration. For more information and to download the latest version available, please refer to ST web www.st.com.



2 Revision history

Table 2. Document revision history

Date	Revision	Changes
25-Jun-2018	1	Initial release.