

THIS DOCUMENT CONTAINS PROPRIETARY DATA OF POLARS INDUSTRIAL ENTERPRISES, INC. NO DISCLOSURE, REPRODUCTION, OR USE OF ANY PART THERE OF MAY BE MADE EXCEPT BY WRITTEN PERMISSION.

REV.	BY	DATE	APPRVL.	REV. NOTE:	P/N
M	BT	03/27/00		ADDED NOTE:	LCP12

**SPECIFICATIONS**

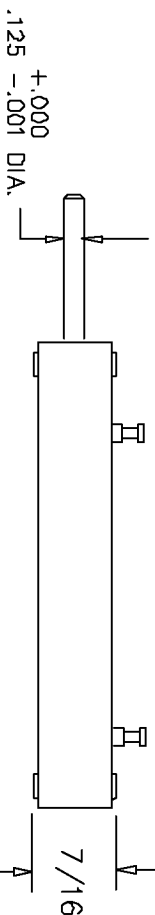
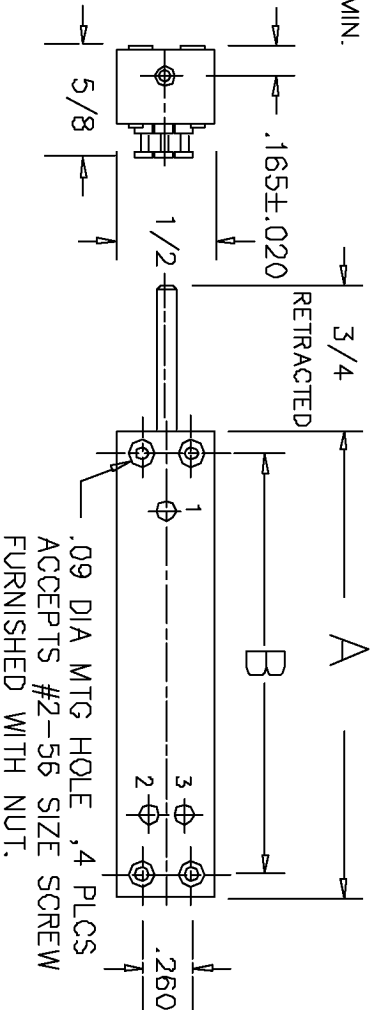
RESOLUTION ----- INFINITE  
 OUTPUT SMOOTHNESS ----- LESS THAN 0.1% INPUT VOLTAGE  
 CONTACT RESIST. VARIATION ----- LESS THAN 2%  
 DIELECTRIC STRENGTH ----- 500 VAC MIN.  
 INSULATION RESISTANCE ----- 1000 MEGOHMS AT 500 VDC MIN.  
 FRICTION ----- 1.8 oz. (3.6 oz FOR LCP12-100)  
 STOP STRENGTH ----- 20 OZ. MIN.,  
 RESISTANCE TEMPCO ----- ±400 PPM/°C  
 WEIGHT ----- 10 TO 35 GRAMS  
 LIFE EXPECTANCY ----- 20 MILLION STROKES

**MATERIALS**

BODY ----- ALUMINUM(BLACK ANODIZE)  
 LID ----- HIGH TEMP. PLASTIC  
 SHAFT ----- STAINLESS STEEL  
 TERMINALS ----- BRASS GOLD PLATED  
 RESISTANCE ELEMENT ----- CONDUCTIVE PLASTIC

**OPTIONS AVAILABLE**

SPECIAL ENDED SHAFTS  
 SPECIAL RESISTANCE VALUES  
 SPECIAL LINEARITY  
 NON STANDARD STROKES  
 SPRING RETURNS

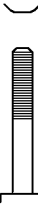


**MODEL NO'S.**

**SHAFT STYLES**

LCP12P-(STROKE)-(RES.) (P)  PLAIN

LCP12A - " " (A)  #4-40 THREAD

LCP12B - " " (B)  #5-40 THREAD

LCP12C - " " (C)  CHAMFERED  
0.030" DIA. X 45°

LCP12S - " " (S)  SPRING RETURN

LCP12S-76 OR -100 (RES) RETRACTED LENGTH OF SHAFT TO BE  
 1 1/4" FOR 3" & 4" STROKE SPRING RETURN.  
 NOTE: FOR SPRING RETURN WITH THREAD, SEE DWG. LCP12ST

MODEL NO.	LCP12-12	LCP12-25	LCP12-50	LCP12-76	LCP12-100
STD.RESIS. VALUES	500,1K,2K 5K,10K	500,1K,2K 5K,10K	500,1K,2K 5K,10K,20K	1K,2K,5K 10K,20K	1K,2K,5K 10K,20K
RESISTANCE TOL.	±20%	±20%	±20%	±20%	±20%
LINEARITY (IND.)	±1.5%	±1.0%	±0.7%	±0.5%	±0.5%
POWER RATING	0.2 WATT	0.4 WATT	0.7 WATT	1.2 WATT	1.2 WATT
STROKE MECH+1-.0	1/2"	1"	2"	3"	4"
STROKE ELECT ±.02	1.50	2.00	3.00	4.00	5.00
"A" DIM ±0.04	1.50	2.00	3.00	4.00	5.00
"B" DIM ±0.02	1.26	1.77	2.75	3.76	4.76

**TOLERANCES**

XX = +/- .010" FRACT. = +/- 1/64"  
 XXX = +/- .005" ANGLES = +/- 1/2"  
 ALL SPECIFICATIONS SUBJECT TO CHANGE WITHOUT NOTICE.

SCALE	DATE: 3-29-86
NONE	BY
APP'VD	BT
CODE IDENT: 19477	



ETI SYSTEMS  
 CARLSBAD  
 CALIFORNIA

TITLE  
 LINEAR MOTION  
 POTENTIOMETER

PART NO.  
 LCP12