

THIS DOCUMENT CONTAINS PROPRIETARY DATA OF POLARIS INDUSTRIAL ENTERPRISES, INC. NO DISCLOSURE, REPRODUCTION, OR USE OF ANY PART THERE OF MAY BE MADE EXCEPT BY WRITTEN PERMISSION.

REV.	BY	DATE	APPRVL.	P/N
C	DMS	1-12-98	BT	LCP15 ADDED LCP15" T" CALLOUT.

ELECTRICAL

RESISTANCE RANGE ----- SEE CHART
 RESISTANCE TOLERANCE ----- ±10%
 LINEARITY, INDEPENDENT ----- SEE CHART
 RESOLUTION ----- ESSENTIALLY INFINITE
 MINIMUM RESISTANCE ----- 1 OHM OR 0.1%
 STROKE ----- SEE CHART
 OUTPUT SMOOTHNESS ----- <0.1% AGAINST INPUT VOLTAGE
 POWER RATING @40°C ----- SEE CHART
 INSULATION RESISTANCE ----- 1000 MEGOHMS AT 1000 VDC
 DIELECTRIC STRENGTH ----- 1 MIN @ 1000VAC
 CONTACT RESIS. VARIATION ----- BELOW 2% C.R.V.

MECHANICAL

STROKE ----- SEE CHART
 STOP STRENGTH ----- 2.2 LBS. MIN.
 FRICTION ----- BELOW 30 GRAMS
 LIFE ----- 20,000,000 STROKES

ENVIRONMENTAL

OPERATING TEMPERATURE RANGE -- 30°C TO 105°C
 TEMPERATURE COEFFICIENT ----- 400 PPM/°C
 VIBRATION ----- 10HZ TO 2,000HZ 15G
 MOISTURE RESISTANCE ----- 40°C 95%RH 120 HOURS
 SHOCK ----- 50G 11ms

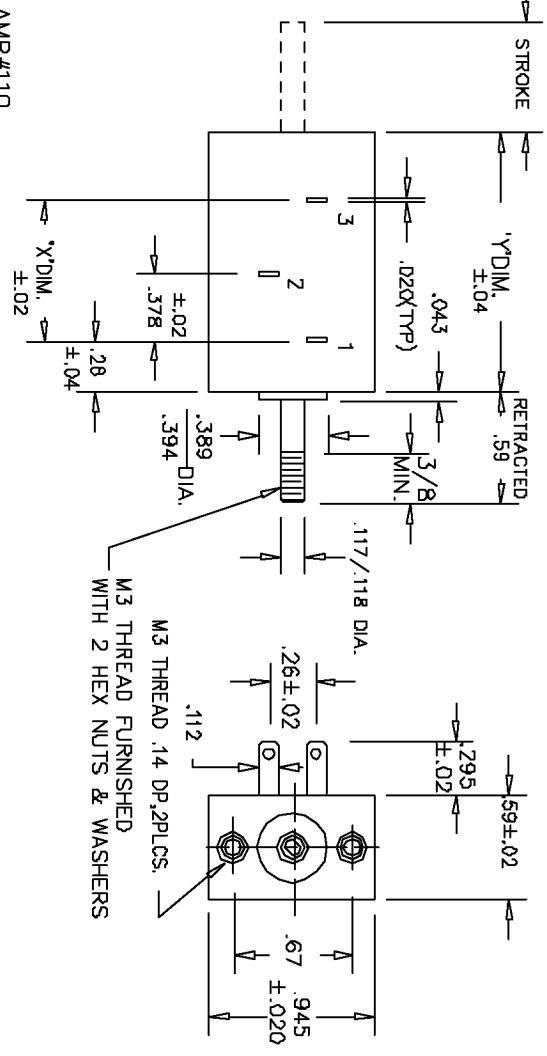
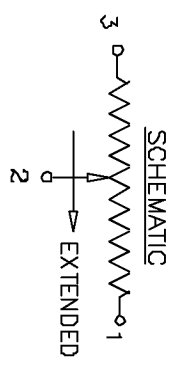
MATERIALS

HOUSING ----- THERMO-SETTING PLASTIC
 SHAFT ----- STAINLESS STEEL
 TERMINALS ----- GOLD PLATED
 RESISTIVE ELEMENT ----- CONDUCTIVE PLASTIC

NON-STANDARD OPTIONS

SPECIAL RESIS. & LINEARITY
 MACHINED SHAFTS
 SPRING RETURN

NOTE: TERMINALS ACCEPT AMP#110 CONNECTORS.

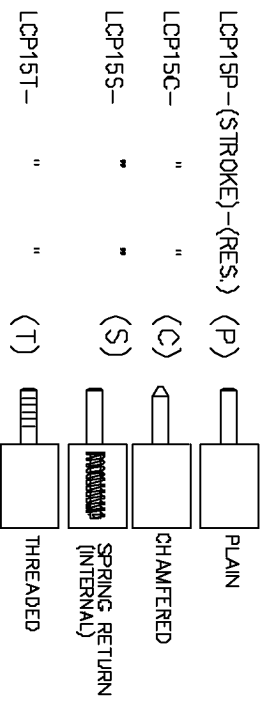


DIMENSION TABLE

DASH NO.	APPROX WEIGHT	MECHANICAL STROKE +.080-.000	ELEC. STROKE ±.020	RESIS. RANGE	LINEARITY STANDARD PRECISION	LINEARITY	POWER RATING
-10	1 OZ.	.394	.394	500/10K	± 2% ± 1%	1.46	0.2 WATTS
-15	1 OZ.	.590	.590	500/10K	± 1% ± 0.5%	1.46	0.3 WATTS
-20	1 OZ.	.787	.787	500/10K	1% 0.5%	1.378	0.4 WATTS
-30	1 OZ.	1.181	1.181	500/10K	1% 0.5%	1.378	0.5 WATTS

MODEL NO.'S.

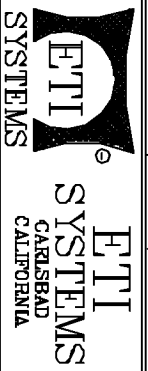
SHAFT STYLES



TOLERANCES
 XX - +/- .010" FRACT. - +/- 1/64"
 XXX - +/- .005" ANGLES - +/- 1/2"

ALL SPECIFICATIONS SUBJECT TO CHANGE WITHOUT NOTICE.

SCALE	DATE: 11-6-88
NONE	BY
APP'VD	BT
CODE IDENT: 19477	



TITLE
 LINEAR MOTION
 POTENTIOMETER

PART NO.
 LCP15