

THIS DOCUMENT CONTAINS PROPRIETARY DATA OF POLARIS INDUSTRIAL ENTERPRISES, INC. NO DISCLOSURE, REPRODUCTION, OR USE OF ANY PART THERE OF MAY BE MADE EXCEPT BY WRITTEN PERMISSION.

REV.	BY	DATE	APPRVL.	P/N
C	DMS	1-12-98	BT	LCP15 ADDED LCP15" T" CALLOUT.

**ELECTRICAL**

RESISTANCE RANGE ----- SEE CHART  
 RESISTANCE TOLERANCE ----- ±10%  
 LINEARITY, INDEPENDENT ----- SEE CHART  
 RESOLUTION ----- ESSENTIALLY INFINITE  
 MINIMUM RESISTANCE ----- 1 OHM OR 0.1%  
 STROKE ----- SEE CHART  
 OUTPUT SMOOTHNESS ----- <0.1% AGAINST INPUT VOLTAGE  
 POWER RATING @40°C ----- SEE CHART  
 INSULATION RESISTANCE ----- 1000 MEGOHMS AT 1000 VDC  
 DIELECTRIC STRENGTH ----- 1 MIN @ 1000VAC  
 CONTACT RESIS. VARIATION ----- BELOW 2% C.R.V.

**MECHANICAL**

STROKE ----- SEE CHART  
 STOP STRENGTH ----- 2.2 LBS. MIN.  
 FRICTION ----- BELOW 30 GRAMS  
 LIFE ----- 20,000,000 STROKES

**ENVIRONMENTAL**

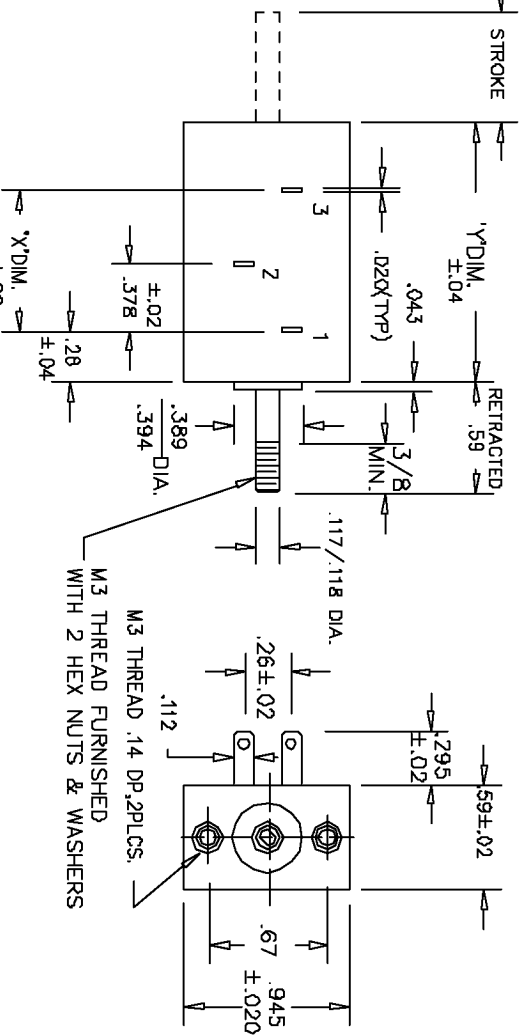
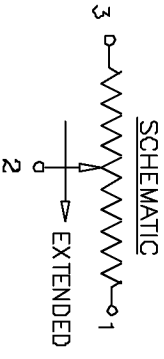
OPERATING TEMPERATURE RANGE -- 30°C TO 105°C  
 TEMPERATURE COEFFICIENT ----- 400 PPM/°C  
 VIBRATION ----- 10HZ TO 2,000HZ 15G  
 MOISTURE RESISTANCE ----- 40°C 95%RH 120 HOURS  
 SHOCK ----- 50G 11ms

**MATERIALS**

HOUSING ----- THERMO-SETTING PLASTIC  
 SHAFT ----- STAINLESS STEEL  
 TERMINALS ----- GOLD PLATED  
 RESISTIVE ELEMENT ----- CONDUCTIVE PLASTIC

**NON-STANDARD OPTIONS**

SPECIAL RESIS. & LINEARITY ----- NOTE: TERMINALS ACCEPT AMP#110  
 MACHINED SHAFTS ----- CONNECTORS.  
 SPRING RETURN



**DIMENSION TABLE**

DASH NO.	APPROX WEIGHT	MECHANICAL STROKE +.080-.000	ELEC. STROKE ±.020	RESIS. RANGE	STANDARD STANDARD PRECISION	LINEARITY	POWER RATING
-10	1 OZ.	.394	.394	500/10K	± 2% ± 1%	1.46	0.2 WATTS
-15	1 OZ.	.590	.590	500/10K	± 1% ± 0.5%	1.46	0.3 WATTS
-20	1 OZ.	.787	.787	500/10K	1% 0.5%	2.05	0.4 WATTS
-30	1 OZ.	1.181	1.181	500/10K	1% 0.5%	2.05	0.5 WATTS

**MODEL NO.'S.**

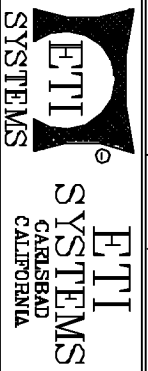
**SHAFT STYLES**

LCP15P-(STROKE)-(RES.)	(P)	PLAIN
LCP15C-	(C)	CHAMFERED
LCP15S-	(S)	SPRING RETURN (INTERNAL)
LCP15T-	(T)	THREADED

**TOLERANCES**

XX - +/- .010" FRACT. - +/- 1/64"  
 XXX - +/- .005" ANGLES - +/- 1/2"  
 ALL SPECIFICATIONS SUBJECT TO CHANGE WITHOUT NOTICE

SCALE	DATE: 11-6-88
NONE	BY
CODE	APPRV'D
IDENT: 19477	BT



**TITLE**  
 LINEAR MOTION  
 POTENTIOMETER

**PART NO.**  
 LCP15