

**NOTES:**

1. DESIGN: Lens mounts the Litepipe securely to display panel providing 180° viewing angle
2. MOUNTING: Panel mounting hole .250 (6.35mm) on 3/8" centers
3. PANEL THICKNESS: For CLB 300 and SQB 400: 1/32" to 1/4".  
For Panels less than 3/16" use SPC 125
4. LENS LOCK: Insert Litepipe into lens aligning the tabs with the lens slot  
Standoff used to adjust the height of a standard LED above the PCB and maintain a maximum .050" clearance between the Litepipe and LED.
5. Standoff used to adjust the height of a standard LED above the PCB and maintain a maximum .050" clearance between the Litepipe and LED.
6. Length is from front of panel to LED
7. Custom lengths available upon request (Minimum order quantity may apply)
8. U.S. & Foreign Pat. Issued and Pend.

REVISIONS				
ECN #	REV	DESCRIPTION	DATE	INITIALS
	N/A	INITIAL RELEASE	1/25/96	JS
	001	REVISED PER ECN111009AZ01	4/23/10	KH

D

D

C

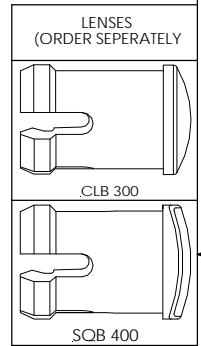
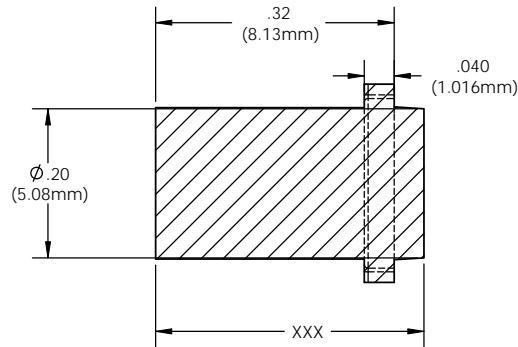
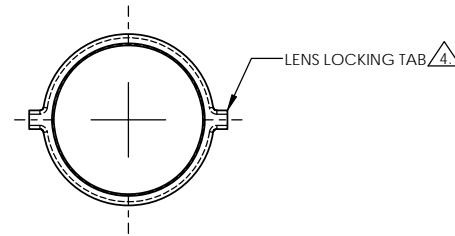
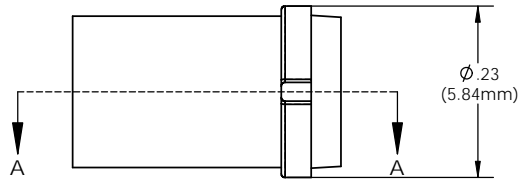
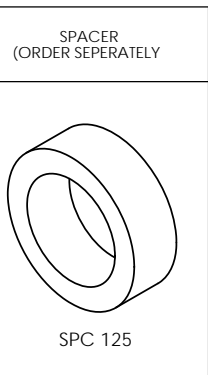
C

B

B

A

A

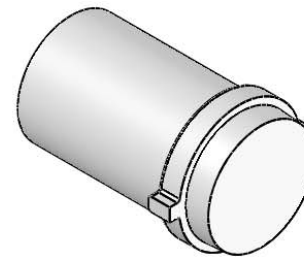
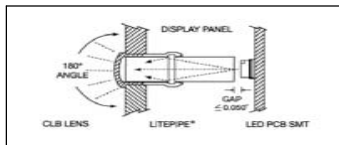


ORDERING CODE:  
**LCV XXX CTP**

LENGTH CODE	
036	= .360"
056	.560"
076	.760"
096	.960"
116	1.160"
136	1.360"

COLOR	
CTP	CLEAR

CUSTOM LENGTHS  
AVAILABLE UPON  
REQUEST  
(SEE NOTE 7)

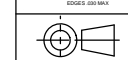


UNLESS OTHERWISE SPECIFIED  
DIMENSIONS ARE IN INCHES

ANGLES DECIMALS  
 $\pm 1^\circ$  .X  $\pm 0.03$   
XXX  $\pm 0.10$   
XXX  $\pm 0.05$

FINISH

BREAK ALL CORNERS AND SHARP  
EDGES (R1/16")



PROPRIETARY AND CONFIDENTIAL  
THE INFORMATION CONTAINED IN THIS  
DRAWING IS THE SOLE PROPERTY OF  
VISUAL COMMUNICATIONS COMPANY, INC. AND  
REPRODUCTION IN PART OR AS A WHOLE  
WITHOUT THE WRITTEN CONSENT OF  
VISUAL COMMUNICATIONS COMPANY, INC. IS  
PROHIBITED.

MATERIAL  
ACRYLIC (OPTICAL GRADE)  
U.L. 94-HB

FINISH

SEE NOTES

APPROVAL

DATE

DO NOT SCALE DRAWING

**VISUAL COMMUNICATIONS COMPANY, INC.**  
190 Bossick Boulevard, Suite 101 San Marcos, CA 92069 USA  
Phone (760) 560-1300 Fax (760) 560-1301 email vccsales@vccite.com

TITLE:  
**5MM ROUND LITEPIPE**

SIZE DWG. NO.

**B** LCV XXX CTP

SCALE: 6:1 SHEET 1 OF 1

DRAWN K.Howard

CHECKED DPZ

DATE 4/23/10

DATE 5/4/10

REV 001