

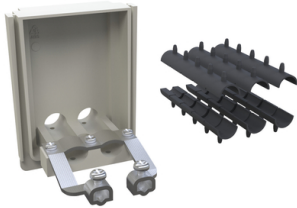
## Specification Sheet

Part Number: LG-S5-3MM-14MM

Cable management solutions improve accessibility and organization of the S3 MDU enclosures.

Versatile cable securing and porting designs accommodate many deployment architectures.

Easy installation allows quick configuration for provisioning and reconfiguration when needed.



S5 Port Cover, Loop-Thru 3mm to 14mm Dia, 2-Port, Gray, 1/pkg

<b>Article Number</b>	857-50233
<b>Type</b>	LGS-S5-3MM-14MM
<b>Color</b>	Gray RAL 7035 (7035) Black (BK)
<b>Quantity Per</b>	bag
<b>Product Description</b>	The S3 MDU installation accessories help configure medium wall-mounted enclosures to meet specific deployment needs. Accommodating a number of cable sizes and quantities, parts are easy to install and help to better organize distribution or drop cable locations.
<b>Short Description</b>	S5 Port Cover, Loop-Thru 3mm to 14mm Dia, 2-Port, Gray, 1/pkg

<b>Global Part Name</b>	LGS-S5-3MM-14MM
<b>Technical Description</b>	The LG-S5-3MM-14MM is a mechanical seal manufactured from ABS and TPE. The seal covers a cable range of 3.0mm – 14.0mm and has a dual outlet for loop through applications. Each seal kit is supplied with the seal plates, TPE spacers and a cable anchor clamp.
<b>Contents of pkg/kit</b>	Loop Gland Seal Plates Cable Diameter Spacers Cable Anchor Clamp
<b>Port Count</b>	2
<b>Variant</b>	Indoor/Outdoor FTTx Enclosures
<b>Package Quantity (Imperial)</b>	1
<b>Package Quantity (Metric)</b>	1