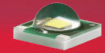
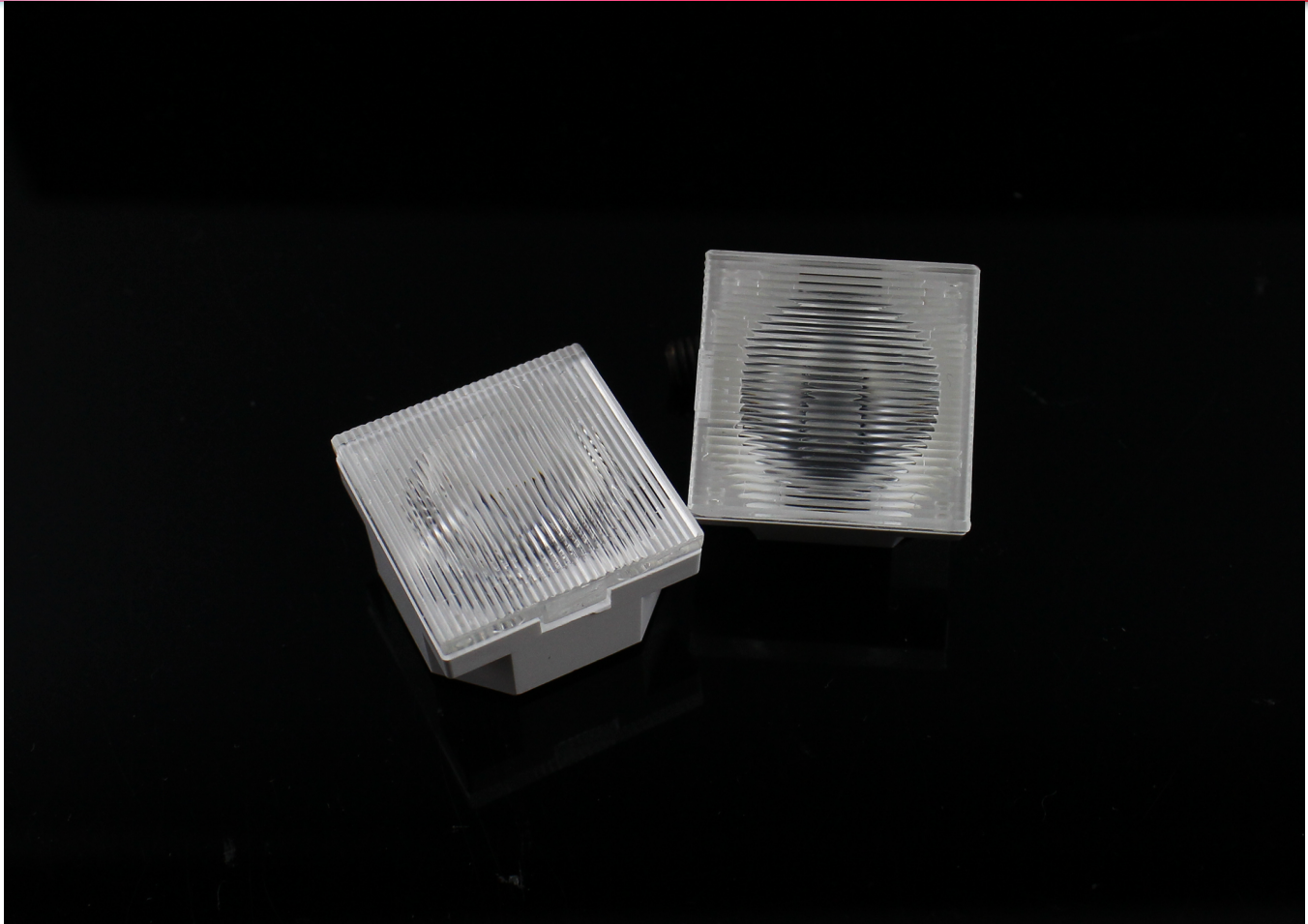


Data Sheet

LL01CR-CRI1055L02-M2



Xlamp XP-E



■ Features & Typical Applications

- High efficiency
- Available with 1 beam angle
- Optimized Uniformity
- Lens with Holder
- Architectural Lighting
- Commercial Lighting

■ Table of Contents

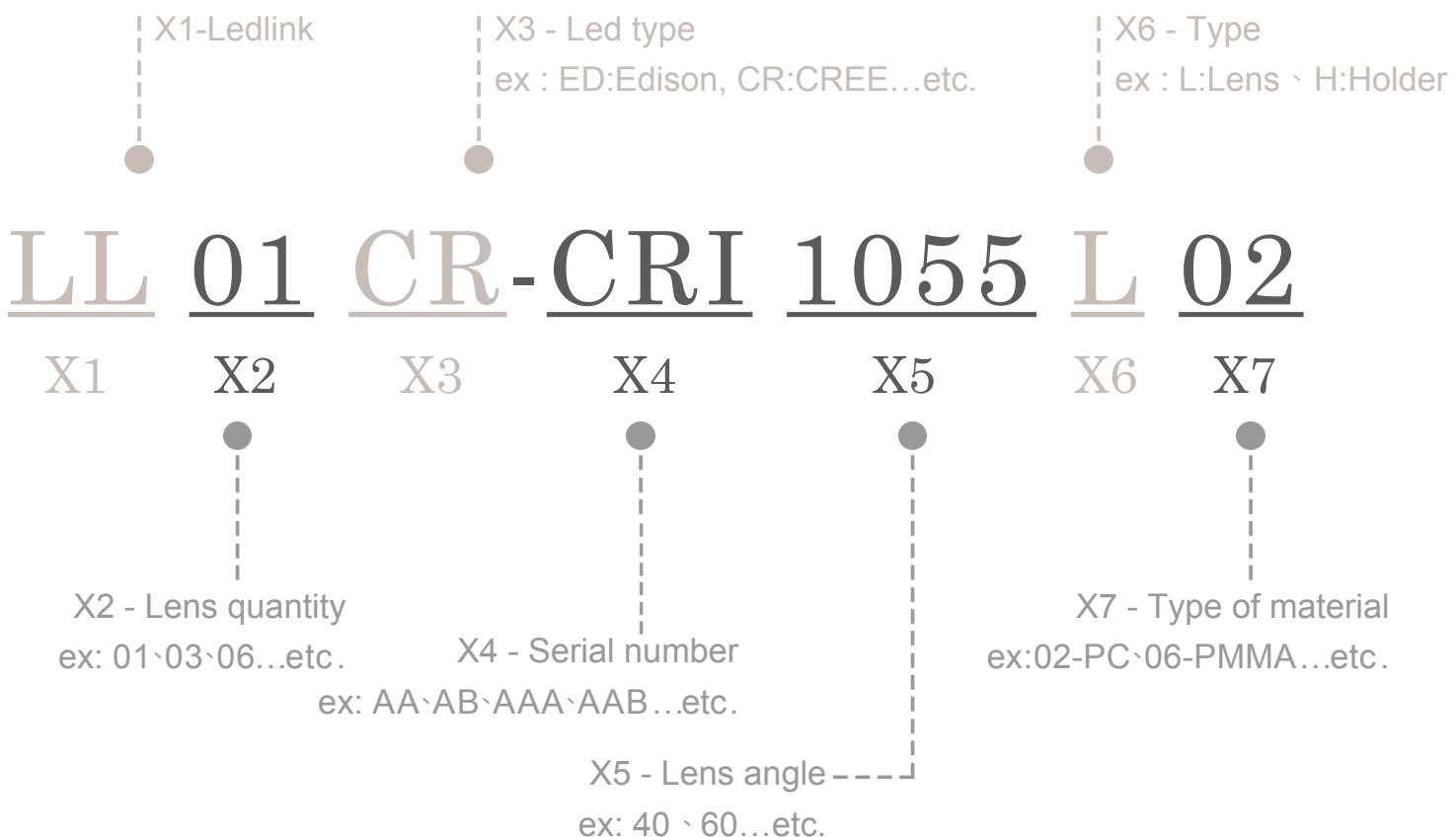
General Information & Product Nomenclature.....	P.2
Optical Specifications	P.3
Mechanical Specifications	P.4
Package Specifications.....	P.5

LL01CR-CRI1055L02-M2

General Information

- Lens Material : SABIC 2180T.
- Holder Material : PC 1250Y.
- Operating Temperature range -40°C~+110°C(upper limit +120°C).
- Storage Temperature range -40°C~+110°C(upper limit +120°C).
 * Average transmittance in visible spectrum 400nm~700nm>90%.
- Usage and Maintenance:
 1. If necessary, clean lenses with mild soap, water and soft cloth.
 2. Never use any commercial cleaning solvents on lenses, like alcohol.
 3. Please handle or install lenses with wearing gloves, skin oils may damage lens or its optical characteristic.

Product Nomenclature

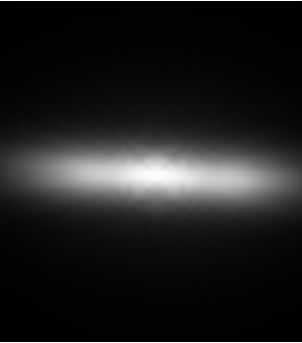
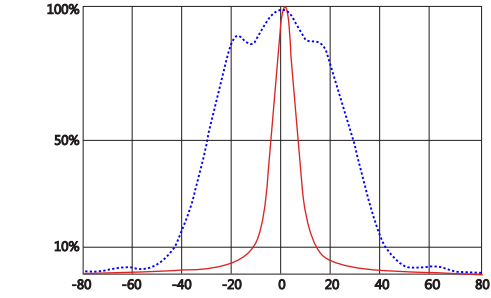
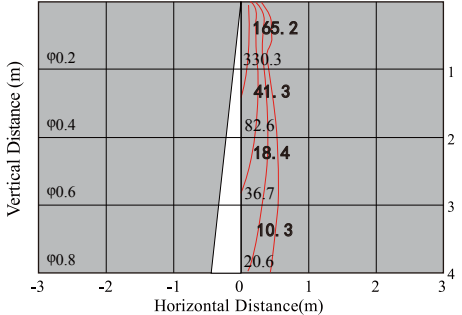


LL01CR-CRI1055L02-M2

Optical Specifications



Note: (1) All the results of analysis are based on 0 degrees of elevation.
 (2) Tolerance: $\pm 10\%$.
 (3) Led Luminous Flux(lm): 91($\pm 5\%$).

Part Number	FWHM	Field Angle*	cd / lm	IES File
LL01CR-CRI1055L02-M2	10.5° / 58.9°	25.5° / 85.7°	3.6	Download
		Angle of Lux in 50% 12.1° Unit:Lux 		
Beam Pattern	Candela Distribution	Illuminance Distribution		

LL01CR-CRI1055L02-M2

Mechanical Specification

1. Fixing method

 Glue

 Screw

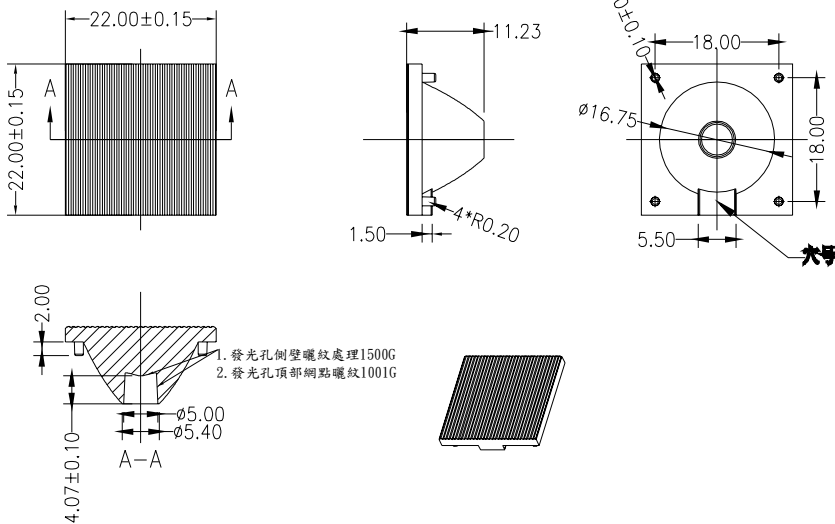
 Tape

 Fixing-ring

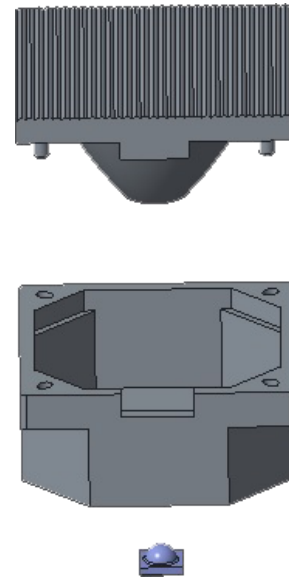
 Frame

Note: (1) All dimensions are in mm.
 (2) All tolerance are ± 0.15 mm unless otherwise specified.

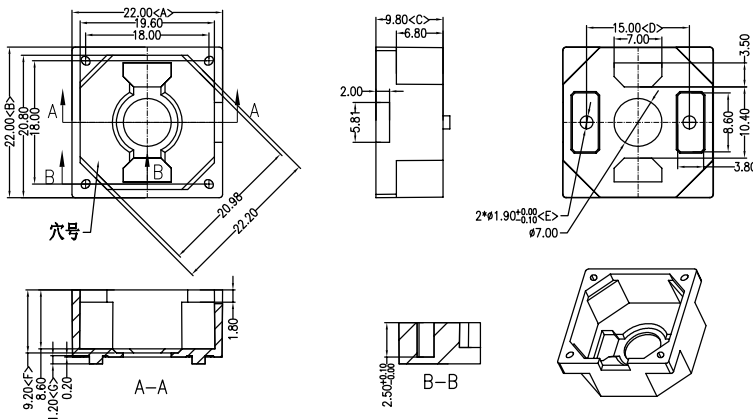
2. Lens dimension



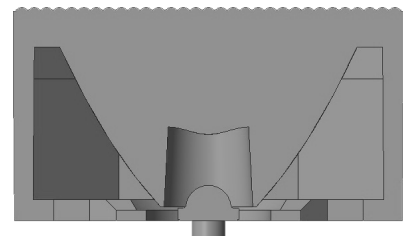
3. Assembly instruction



4. Holder dimension



5. View assembly lens with LED:



Holder part number : LL01CRR1055H2