

# Data Sheet

LL12ZZ-CRC45145L19



## ■ Features & Typical Applications

- High efficiency
- Roadway Lighting
- Optimized Uniformity
- Anti-glare

## ■ Table of Contents

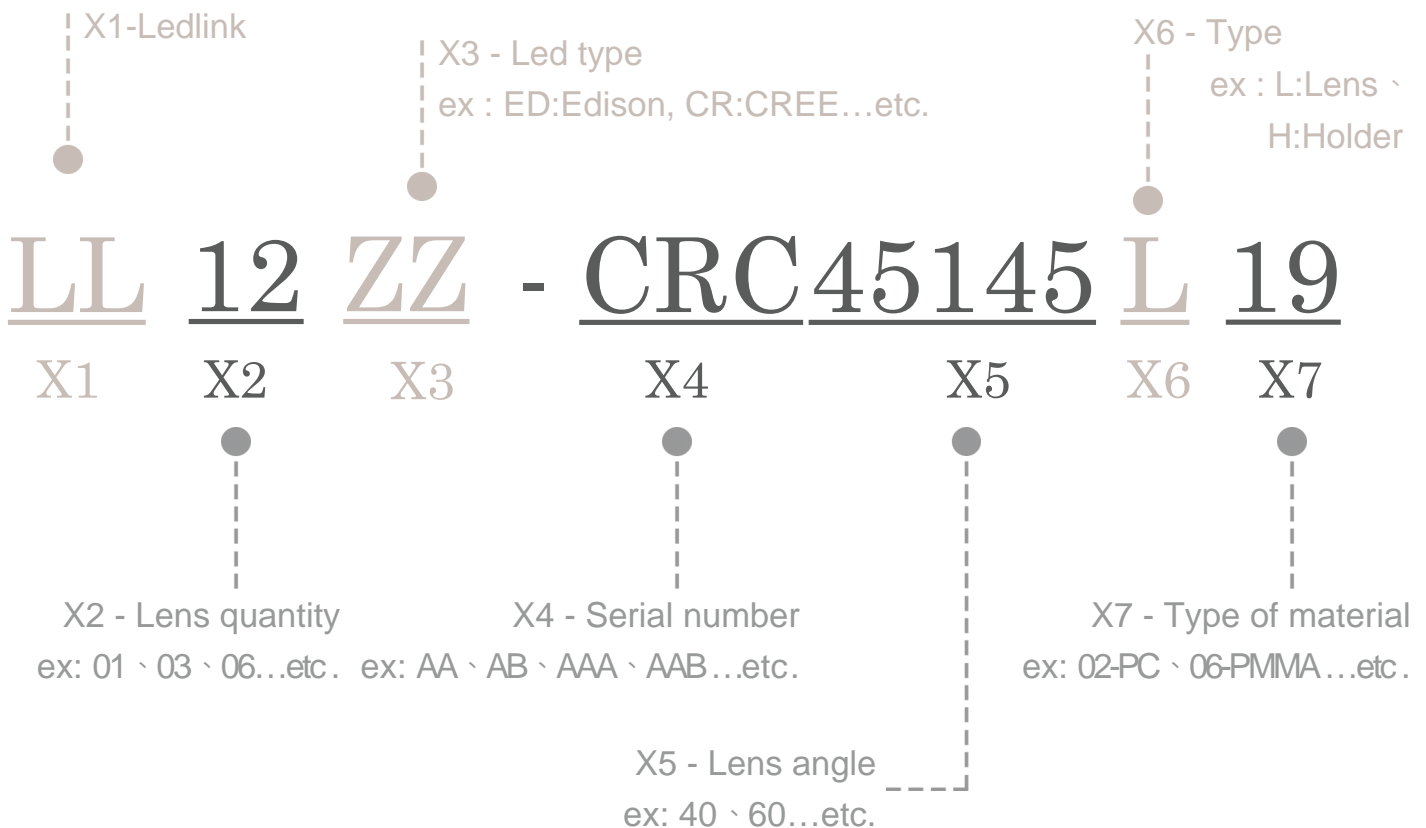
|   |     |
|---|-----|
| General Information & Product Nomenclature..... | P.2 |
| Optical Specifications .....                    | P.3 |
| Mechanical Specifications .....                 | P.4 |
| Package Specifications .....                    | P.5 |

# LL12ZZ-CRC45145L19

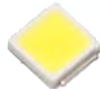
## General Information

- Lens Material :PC 1250Z
- Operating Temperature range -40°C~+110°C(upper limit +120°C).
- Storage Temperature range -40°C~+110°C(upper limit +120°C).
  - \* Average transmittance in visible spectrum 400nm~700nm>90%.
- Usage and Maintenance:
  1. If necessary, clean lenses with mild soap, water and soft cloth.
  2. Never use any commercial cleaning solvents on lenses, like alcohol.
  3. Please handle or install lenses with wearing gloves, skin oils may damage lens or its optical characteristic.

## Product Nomenclature



# LL12ZZ-CRC45145L19 Optical Specifications

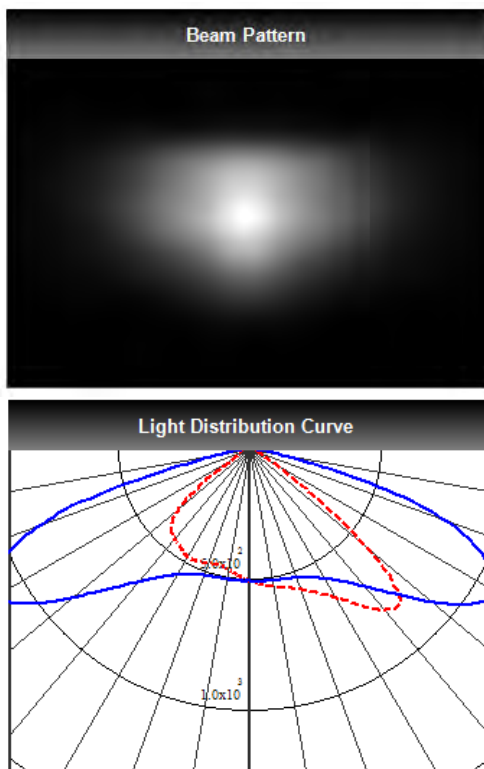


3030

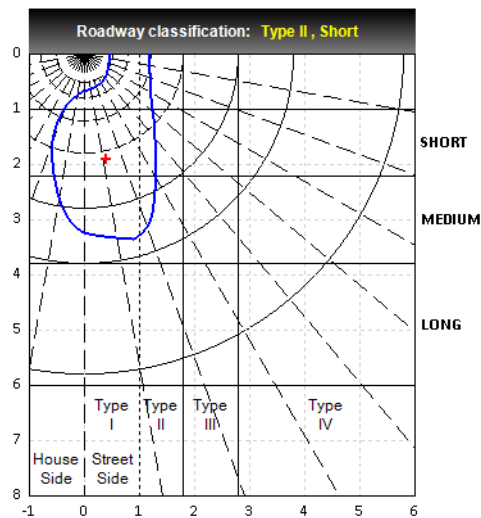
Note: (1) All the results of analysis are based on 0 degrees of elevation.  
(2) Tolerance:  $\pm 10\%$ .  
(3) Led Luminous Flux(lm): 2880( $\pm 5\%$ ).

IES File: [Download](#)

@elevation 0°



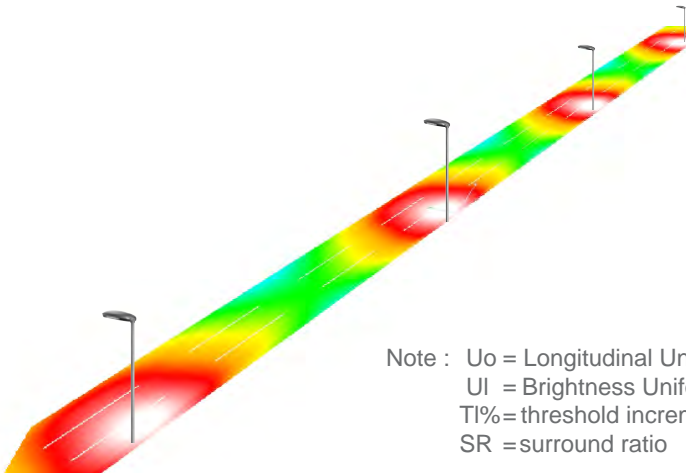
--- C0:0-180 — C1:90-270



| Elevation | Roadway Classification |
|-----------|------------------------|
| 0°        | Type II, Short         |
| 5°        | Type II, Short         |
| 10°       | Type III, Short        |
| 15°       | Type III, Short        |
| 20°       | Type IV, Medium        |

## DIALux Simulation Result

Analyzed file: [Download](#)



Note : U<sub>o</sub> = Longitudinal Uniformity  
U<sub>i</sub> = Brightness Uniformity  
TI% = threshold increment  
SR = surround ratio

| Recommend configuration condition   |            |
|-------------------------------------|------------|
| Height                              | = 10m      |
| Distance                            | = 40m      |
| Roadwidth                           | = 10m      |
| Elevation                           | = 0 degree |
| Overhang                            | = 1.0m     |
| Result                              |            |
| E <sub>min</sub> / E <sub>max</sub> | = 0.32     |
| E <sub>min</sub> / E <sub>avg</sub> | = 0.55     |
| U <sub>i</sub>                      | = 0.73     |
| U <sub>o</sub>                      | = 0.67     |
| TI                                  | = 8%       |
| SR                                  | = 0.64     |

\*The results would be similar if the configuration conditions are equally magnified or minified.

\*This testing result is obtained through testing the popular rank LED samples which provided by the original manufacturer. Hence, the testing results would be varied as the users choose same LED model but different rank.

\*The analyzed file require DIALux v4.12 and above to open.

# LL12ZZ-CRC45145L19

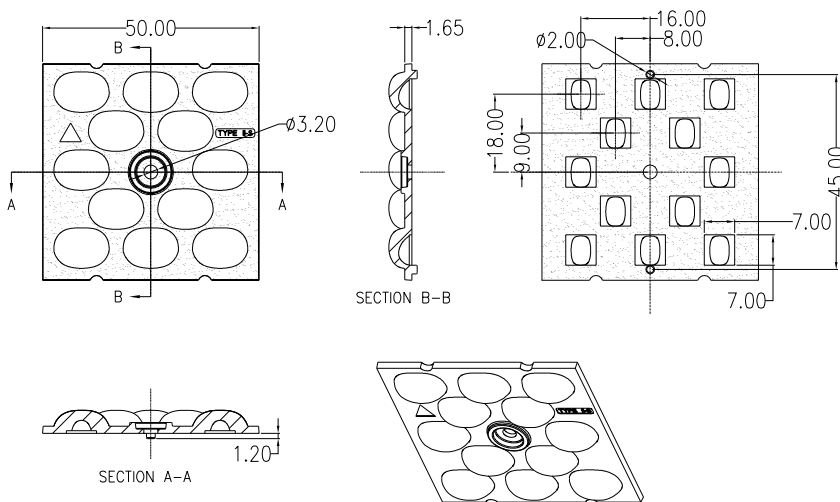
## Mechanical Specification

### 1. Fixing method

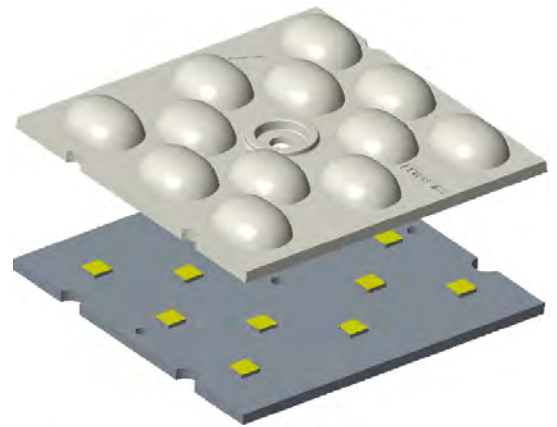
Glue     
  Screw     
  Tape     
  Fixing-ring     
  Frame

Note: (1) All dimensions are in mm.  
 (2) All measurements are  $\pm 0.15$  mm unless otherwise indicated.

### 2. Lens dimension



### 3. Assembly instruction



### 4. Assembly dimension

### 5. View assembly lens with MCPCB:

