

DATA SHEET

Liquid Level Switches

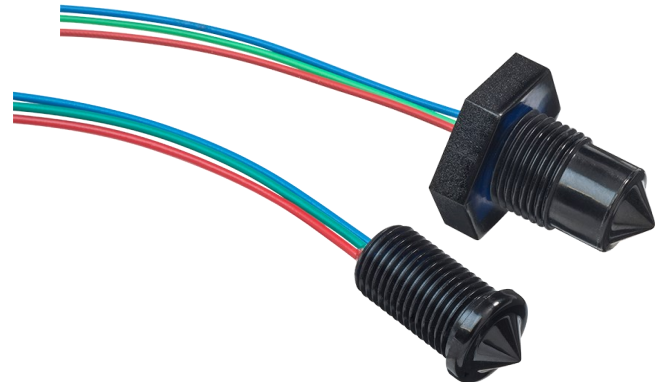
Honeywell LLE Standard Temp Series Alternatives

For part numbers LLE101000, LLE102000, LLE103000 and LLE105000



FEATURES

- Liquid level switches that can detect almost any liquid type; oil or water based
- Choice of mounting; internal or external
- Choice of threads



| | | | | |
|--|--|--|---|---|
| Housing/ Mounting M10x1 M12x1 | Output Type/Logic PUSH PULL 1 0 HIGH IN AIR | Supply Voltage 4.5 - 15.4 V VOLTAGE | Output Current UP TO 100mA CURRENT | Temp -25°C to +80°C TEMPERATURE |
|--|--|--|---|---|

BENEFITS

- Low power
- Low cost
- Compact design

OUTPUT VALUES

Output Voltage^b (V_{out}): **I_{out} = 100mA**
Output High V_{out} = V_s - 1.5V max
Output Low V_{out} = 0V + 0.5V max

TECHNICAL SPECIFICATIONS

| | |
|--|--|
| Supply voltage (V _s) | 4.5V _{DC} to 15.4V _{DC} |
| Supply current (I _s) | 2.5mA max. (V _s = 15.4V _{DC}) |
| Output sink and source current (I _{out}) | 100mA |
| Operating temperatures | -25°C to +80°C |
| Storage temperatures | -30°C to +85°C |
| Housing material ^a | Polysulfone |
| Sensor termination | 24AWG, 250mm PTFE wires, 8mm tinned |

Other sensor options available on request, email: technical@sstsensing.com

Need help? Ask the expert
Tel: + 44 (0)1236 459 020
and ask for "Technical"

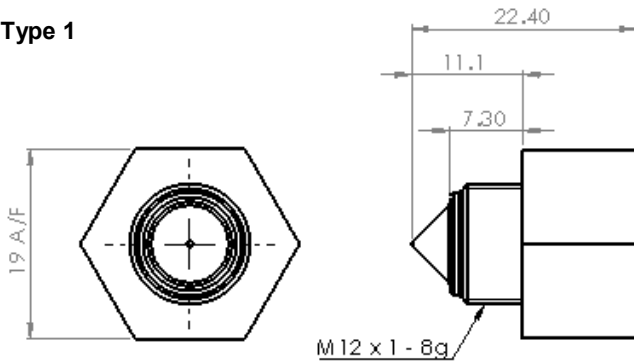


- a) Before use check that the fluid in which you wish to use these devices is compatible with Polysulfone.
b) Voltages applicable to output value stated.

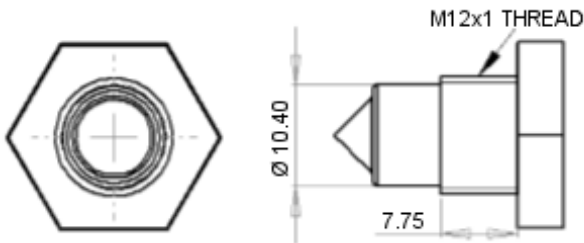
OUTLINE DRAWING

All dimensions shown in mm. Tolerances = ± 1 mm.

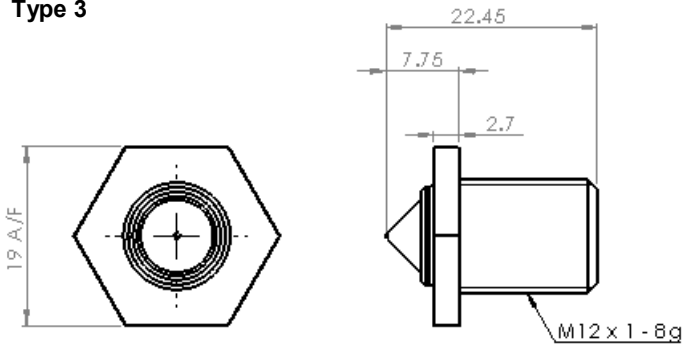
Type 1



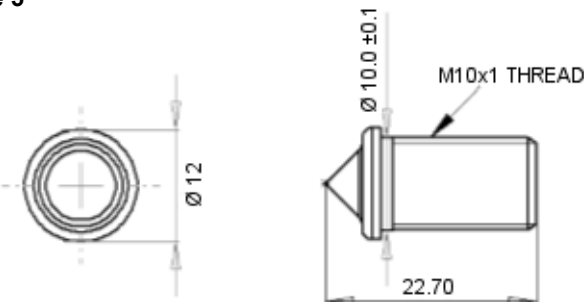
Type 2



Type 3



Type 5



HOUSING SPECIFICATIONS

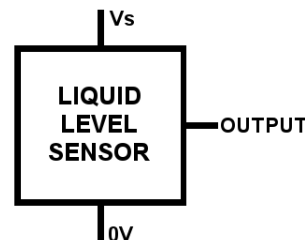
| Housing Series - External Mounting | | |
|------------------------------------|-------------------------------|------------------------------------|
| | Type 1 | Type 2 |
| Thread | M12x1x8g | M12x1x8g with hex nut ^c |
| Pressure ^d | 7 bar / 101 psi maximum | |
| Tightening Torque | 1.5 Nm / 13.26 in-lbs maximum | |

| Housing Series - Internal Mounting | | |
|------------------------------------|------------------------------------|----------------|
| | Type 3 | Type 5 |
| Thread | M12x1x8g with hex nut ^c | M10x1 |
| Pressure ^d | 7 bar / 101 psi maximum | |
| Tightening Torque | 1.5 Nm / 13.26 in-lbs maximum | Not Applicable |

NOTE: In the cases of Type 1 and Type 3 sensors, the rear of the SST sensors are slightly longer than the Honeywell sensors.

NOTE: The dimensions of the Type 5 part make it a "push in" part the same as LLE105000. Note that the sensor can also be secured using an M10 nut.

ELECTRICAL INTERFACE



| Wire | Designation |
|-------|-------------|
| Red | Vs |
| Green | Output |
| Blue | 0V |



- c) Hex nut and washer supplied with Type 1, Type 2 and Type 3.
 d) When correctly sealed.