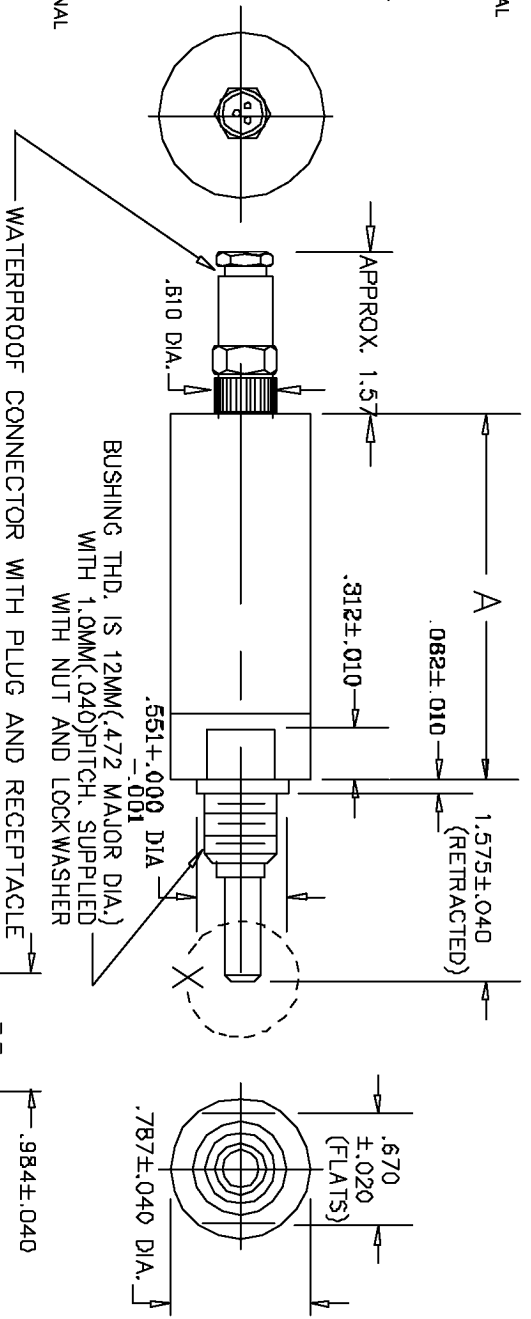
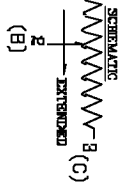


ELECTRICAL
 RESISTANCE RANGE ----- SEE CHART
 RESISTANCE TOLER. ----- ±5%
 NOISE ----- 100 OHM MAX
 INSULATION RESISTANCE ----- 100 MEGOHMS AT 500 VDC
 DIELECTRIC STRENGTH ----- 900VDC MIN
 END RESISTANCE ----- 1 OHM OR 0.1% OF TOTAL

MECHANICAL
 STOP STRENGTH ----- 10 LBS. MIN
 FRICTION ----- 52.91 OZ. MAX
 LIFE ----- 2,000,000 STROKES MIN.
 MARKING: ETI SYSTEMS
 SCHEMATIC, DATE CODE, RESIS. LIN.
 NATIONAL ORIGIN

ENVIRONMENTAL
 OPERATING TEMPERATURE ----- -20°C TO +60°C
 NON-STANDARD OPTIONS
 RESIST. TOL ±3%
 MACHINED SHAFTS
 EXTRA TAP
 HYBRID ELEMENT
 CONDUCTIVE PLASTIC ELEMENT
 SPECIAL LINEARITY

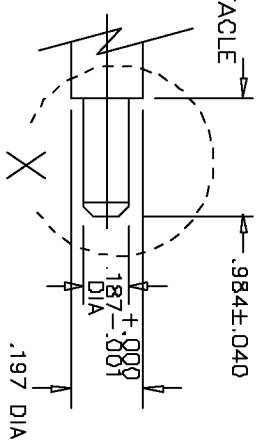
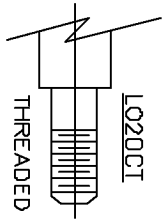
(A)(B)(C) REPRESENT TERMINAL CODES OF THE CONNECTOR



RESOLUTION CHART

RESISTANCE DASH NO.	POWER RATING	10	25	50	100	200	500	1K	2K	5K	10K	20K	50K
LO20C-15	0.5W	1.3%	1.2%	0.87%	0.90%	0.72%	0.53%	0.44%	0.39%	0.29%			
LO20C-50	0.75W		0.42%	0.34%	0.26%	0.21%	0.21%	0.17%	0.14%	0.10%	0.08%		
LO20C-100	1.0W			0.21%	0.16%	0.13%	0.14%	0.11%	0.08%	0.06%	0.05%	0.04%	
LO20C-200	2.0W				0.10%	0.08%	0.06%	0.07%	0.05%	0.04%	0.03%	0.025	0.018

WEIGHT	DASH NO.	MECHANICAL STROKE ±.06	ELECTRICAL STROKE ±.04	RESISTANCE RANGE = OHMS	LINEARITY
.3LB.	-15	.630	.590	10 - 5K	±1.0%
.3LB.	-50	2.087	1.968	25 TO 20K	±0.7%
.35LB.	-100	4.055	3.937	50 TO 20K	±0.5%
.70LB.	-200	7.992	7.874	100 TO 80K	±0.5%



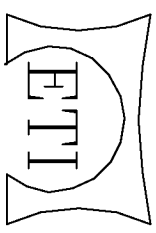
WIREWOUND RESISTANCE ELEMENT

TOLERANCES

XX = +/- .010" FRACT. = +/- 1/64"
 XXX = +/- .005" ANGLES = +/- 1/2°
 ALL SPECIFICATIONS SUBJECT TO CHANGE WITHOUT NOTICE.

SCALE: NONE
 DATE: 2-2-96
 BY: DM
 APPROVD:

THIS DOCUMENT CONTAINS PROPRIETARY DATA OF POLARIS INDUSTRIAL ENTERPRISES, INC. NO DISCLOSURE, REPRODUCTION, OR USE OF ANY PART THERE OF MAY BE MADE EXCEPT BY WRITTEN PERMISSION.



ETI SYSTEMS CARLSBAD CALIFORNIA

OIL FILLED
 LINEAR MOTION
 POTENTIOMETER

PART NO. LO20C