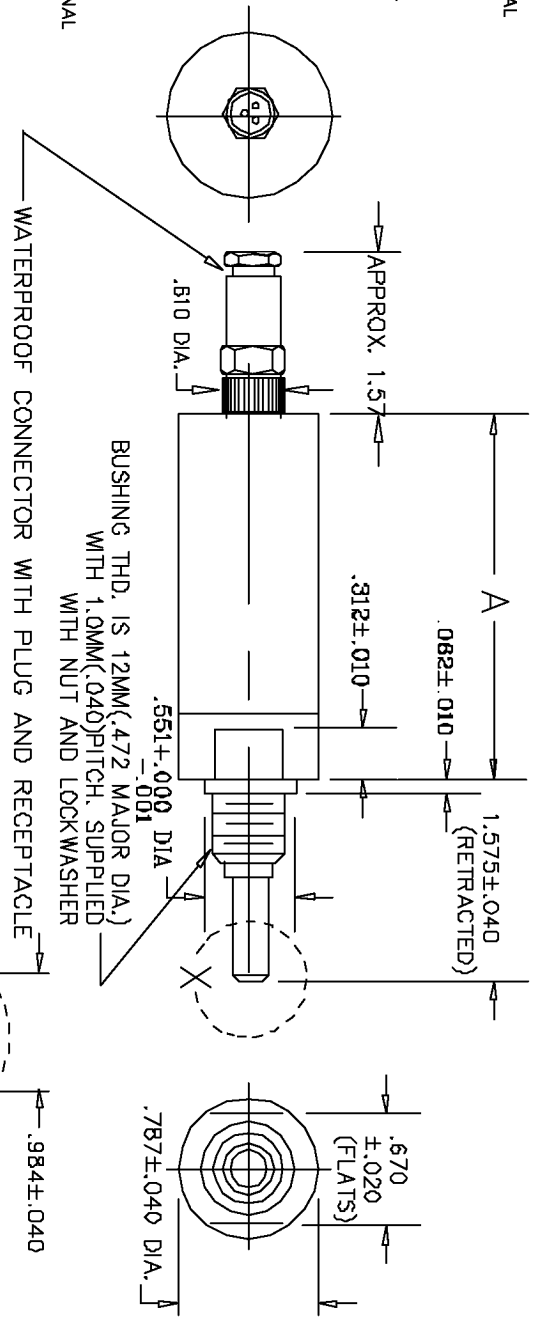
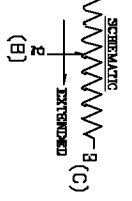


**ELECTRICAL**  
 RESISTANCE RANGE ----- SEE CHART  
 RESISTANCE TOLER. ----- ±5%  
 NOISE ----- 100 OHM MAX  
 INSULATION RESISTANCE ----- 100 MEGOHMS AT 500 VDC  
 DIELECTRIC STRENGTH ----- 900VDC MIN  
 END RESISTANCE ----- 1 OHM OR 0.1% OF TOTAL

**MECHANICAL**  
 STOP STRENGTH ----- 10 LBS. MIN  
 FRICTION ----- 52.91 OZ. MAX  
 LIFE ----- 2,000,000 STROKES MIN.  
 MARKING: ETI SYSTEMS  
 SCHEMATIC, DATE CODE, RESIS. LIN.  
 NATIONAL ORIGIN

**ENVIRONMENTAL**  
 OPERATING TEMPERATURE ----- -20°C TO +60°C  
 NON-STANDARD OPTIONS  
 RESIST. TOL ±3%  
 MACHINED SHAFTS  
 EXTRA TAP  
 HYBRID ELEMENT  
 CONDUCTIVE PLASTIC ELEMENT  
 SPECIAL LINEARITY

(A)(B)(C) REPRESENT TERMINAL CODES OF THE CONNECTOR



**RESOLUTION CHART**

RESISTANCE DASH NO.	POWER RATING	10	25	50	100	200	500	1K	2K	5K	10K	20K	50K
LO20C-15	0.5W	1.3%	1.2%	0.87%	0.90%	0.72%	0.53%	0.44%	0.39%	0.29%			
LO20C-50	0.75W		0.42%	0.34%	0.26%	0.21%	0.21%	0.17%	0.14%	0.10%	0.08%		
LO20C-100	1.0W			0.21%	0.16%	0.13%	0.14%	0.11%	0.08%	0.06%	0.05%	0.04%	
LO20C-200	2.0W				0.10%	0.08%	0.06%	0.07%	0.05%	0.04%	0.03%	0.025	0.018

WEIGHT	DASH NO.	MECHANICAL STROKE ±.06	ELECTRICAL STROKE ±.04	RESISTANCE RANGE = OHMS	LINEARITY
.3LB.	-15	.630	.590	10 - 5K	±1.0%
.3LB.	-50	2.087	1.968	25 TO 20K	±0.7%
.35LB.	-100	4.055	3.937	50 TO 20K	±0.5%
.70LB.	-200	7.992	7.874	100 TO 80K	±0.5%

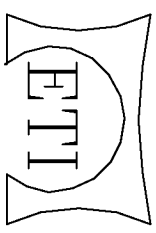
**WIREWOUND RESISTANCE ELEMENT**

**TOLERANCES**

XX = +/- .010" FRACT. = +/- 1/64"  
 XXX = +/- .005" ANGLES = +/- 1/2°  
 ALL SPECIFICATIONS SUBJECT TO CHANGE WITHOUT NOTICE.

SCALE	NONE
DATE:	2-2-96
BY	DM
APPRVD	
CODE IDENT.	19477

THIS DOCUMENT CONTAINS PROPRIETARY DATA OF POLARIS INDUSTRIAL ENTERPRISES, INC. NO DISCLOSURE, REPRODUCTION, OR USE OF ANY PART THERE OF MAY BE MADE EXCEPT BY WRITTEN PERMISSION.



**TITLE**  
 OIL FILLED  
 LINEAR MOTION  
 POTENTIOMETER

**PART NO.**  
 LO20C

**CARLSBAD SYSTEMS CALIFORNIA**