

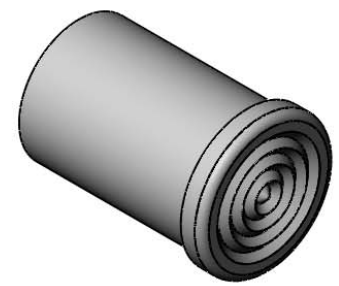
8 7 6 5 4 3 2 1

**NOTES:**

1. MOUNTING: Panel mounting hole .171" (4.34mm) Diameter  
 Litepipe from .200" to .500" use grommet retainer RTN 150  
 Litepipe from .500" to 2.00" the spring retainer RTN 250 is recommended for rigidity
2. Standoff used to adjust the height of a standard LED above the PCB to maintain a maximum .050" clearance between Litepipe and LED.
3. U.S. & Foreign Pat Issued & Pend.

| REVISIONS |     |                                   |          |          |
|-----------|-----|-----------------------------------|----------|----------|
| ECN #     | REV | DESCRIPTION                       | DATE     | INITIALS |
|           | N/A | INITIAL RELEASE                   | 8/25/98  | JS       |
|           | 1   | UPDATE DWG FORMAT                 | 12/15/08 | JG       |
|           | 2   | REVISE .170" DIMENSION TOLERANCES | 3/11/09  | AZ       |
|           | 001 | REVISED PER ECR111009AZ01         | 4/23/10  | KH       |

**RETAINERS  
(ORDER SEPARATELY)**



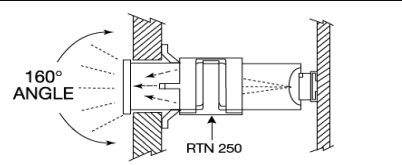
ORDERING CODE: **LPC XXX CTP**

SECTION A-A

**LENGTH CODE  
(Min 020=.200" / Max 200=2.000")**

|     |     |     |     |     |     |     |     |     |
|-----|-----|-----|-----|-----|-----|-----|-----|-----|
| 020 | 038 | 056 | 074 | 092 | 112 | 135 | 157 | 180 |
| 022 | 040 | 058 | 076 | 094 | 115 | 137 | 160 | 182 |
| 024 | 042 | 060 | 078 | 096 | 117 | 140 | 162 | 185 |
| 026 | 044 | 062 | 080 | 098 | 120 | 142 | 165 | 187 |
| 028 | 046 | 064 | 082 | 100 | 122 | 145 | 167 | 190 |
| 030 | 048 | 066 | 084 | 102 | 125 | 147 | 170 | 192 |
| 032 | 050 | 068 | 086 | 105 | 127 | 150 | 172 | 195 |
| 034 | 052 | 070 | 088 | 107 | 130 | 152 | 175 | 197 |
| 036 | 054 | 072 | 090 | 110 | 132 | 155 | 177 | 200 |

| COLOR |       |
|-------|-------|
| CTP   | CLEAR |



SPECIAL LENGTHS UPON REQUESTS

|  |  |  |
|--|--|--|
| <small>UNLESS OTHERWISE SPECIFIED DIMENSIONS ARE IN INCHES</small><br>ANGLES DECIMALS ±1° .X ±.020<br>FINISH .XXX ±.010 .XXX ±.005<br><small>BREAK ALL CORNERS AND SHARP EDGES (R1/16")</small><br>THIRD ANGLE PROJECTION<br><small>THE INFORMATION CONTAINED IN THIS DRAWING IS THE SOLE PROPERTY OF VISUAL COMMUNICATIONS COMPANY, INC. AND IS REPRODUCED IN PART OR AS A WHOLE WITHOUT THE WRITTEN CONSENT OF VISUAL COMMUNICATIONS COMPANY, INC.</small> | <b>MATERIAL</b><br>ACRYLIC (OPTICAL GRADE)<br>UL 94-HB | <b>VISUAL COMMUNICATIONS COMPANY, INC.</b><br>190 Bossick Boulevard, Suite 101 San Marcos, CA 92069 USA<br>Phone (760) 560-1300 Fax (760) 560-1301 email vccsales@vccite.com |
|  | <b>FINISH</b><br>SEE NOTES                             | <b>TITLE:</b><br>CLIPLITE 4MM LITEPIPE<br>VERTICAL   |
| <b>APPROVAL</b><br>DRAWN K.Howard<br>CHECKED DPZ   | <b>DATE</b><br>4/23/10<br>5/4/10                       | <b>SIZE</b> DWG. NO.<br><b>B</b> LPC XXX CTP   |
| DO NOT SCALE DRAWING   |  | <b>REV</b><br>001<br>SCALE: 8:1 SHEET 1 OF 1   |

8 7 6 5 4 3 2 1