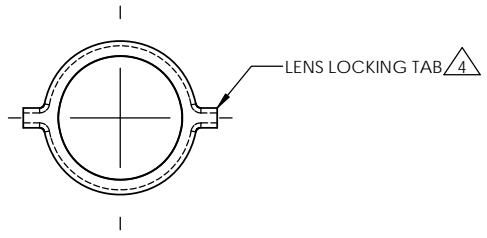
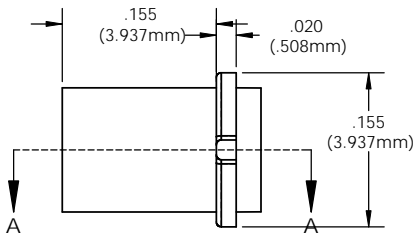


8 7 6 5 4 3 2 1

**NOTES:**

1. DESIGN: Lens mounts the Litepipe securely to display panel providing 180° viewing angle
2. MOUNTING: Panel mounting hole .171 (4.3mm) on 1/4" centers
3. PANEL THICKNESS: For SMB 200 & SMQ 250: 1/32" to 1/8"
4. **LENS LOCK:** Insert Litepipe into lens aligning the tabs with the lens slot
5. Standoff used to adjust the height of a standard LED above the PCB and maintain a maximum .050" clearance between the Litepipe and LED.
6. Length is from front of panel to LED
7. Custom lengths available upon request (Minimum order quantity may apply)
8. U.S. & Foreign Pat. Issued & Pend.

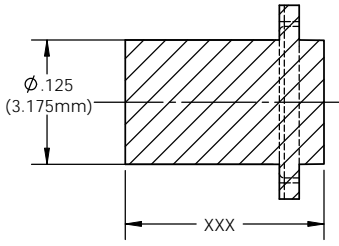
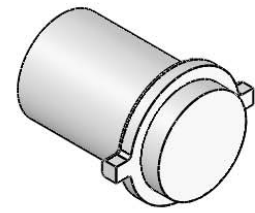
REVISIONS				
ECN #	REV	DESCRIPTION	DATE	INITIALS
	N/A	INITIAL RELEASE	4/4/96	JS
	001	REVISED PER ECR111009AZ01	4/23/10	KH



LENSES  
(ORDER SEPERATELY)

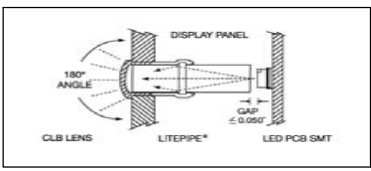
SMB 200

SMQ 250



ORDERING CODE: **LSV XXX CTP**

LENGTH CODE		COLOR	
020	= .200"	CTP	CLEAR
040	.400		
060	.600		
080	.800		
100	1.000		
120	1.200		



CUSTOM LENGTHS  
AVAILABLE UPON  
REQUEST  
(SEE NOTE 7)

<small>UNLESS OTHERWISE SPECIFIED DIMENSIONS ARE IN INCHES</small> ANGLES DECIMALS ±1° FINISH X ±.002 XXX ±.010 XXX ±.005 BREAK ALL CORNERS AND SHARP EDGES (R1/16") THIRD ANGLE PROJECTION <small>THE INFORMATION CONTAINED IN THIS DRAWING IS THE SOLE PROPERTY OF VISUAL COMMUNICATIONS COMPANY, INC. AND IS LOANED TO YOU AS A SERVICE. IT IS TO BE USED ONLY FOR THE PROJECT AND FOR THE PURPOSES SPECIFIED IN THE ORDER. IT IS NOT TO BE REPRODUCED OR TRANSMITTED IN ANY FORM OR BY ANY MEANS, ELECTRONIC OR MECHANICAL, INCLUDING PHOTOCOPYING, RECORDING, OR BY ANY INFORMATION STORAGE AND RETRIEVAL SYSTEM.</small>	MATERIAL <b>ACRYLIC (OPTICAL GRADE)</b> <b>U.L. 94-HB</b>	<b>VISUAL COMMUNICATIONS COMPANY, INC.</b> 190 Bossick Boulevard, Suite 101 San Marcos, CA 92069 USA Phone (760) 560-1300 Fax (760) 560-1301 email vccsales@vccite.com
	FINISH SEE NOTES	TITLE: <b>3MM ROUND LITEPIPE</b>
APPROVAL DATE DRAWN K.Howard 4/23/10 CHECKED DPZ 5/4/10 DO NOT SCALE DRAWING	SCALE: 8:1	SHEET 1 OF 1

8 7 6 5 4 3 2 1