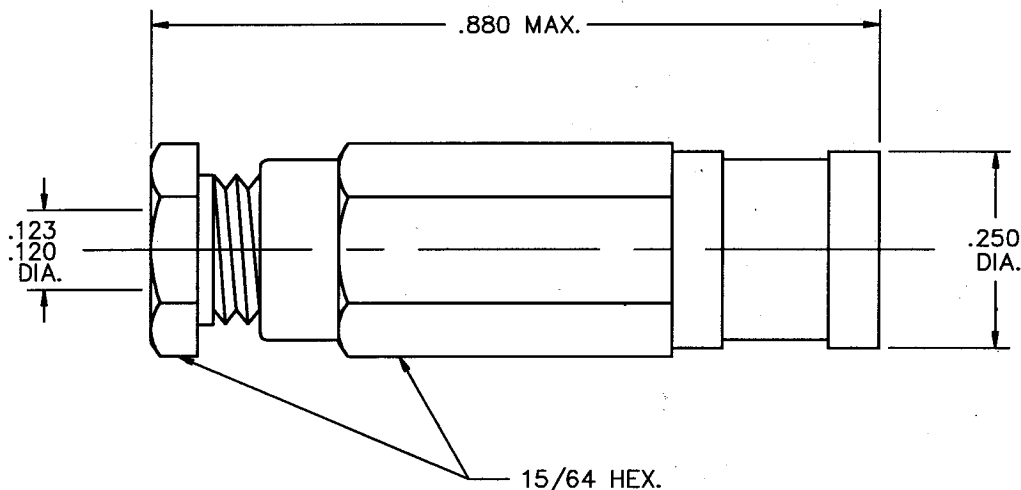


# ENG. FILE COPY

CONFIGURATION: (TOLERANCE +/- .005 UNLESS OTHERWISE SPECIFIED)



## SMB PLUG - RG 174 CABLE CLAMP ATTACHMENT

DWG. NO.  
M39012/67-0004

### ELECTRICAL:

NOMINAL IMPEDANCE (OHMS)	50
FREQUENCY RANGE (GHz)	DC TO 4.0
VOLTAGE RATING (MAX. VRMS)	335
VSWR (MAX.)	1.25+.04
INSERTION LOSS (DB MAX.)	.30 AT 1.5 GHz.
RF LEAKAGE (MIN. DB DOWN)	100
RF HIGH POTENTIAL (MAX. VRMS)	700 AT 5 MHz.
DIELECTRIC WITHSTANDING VOLT. (MAX. VRMS)	1000
INSULATION RESISTANCE (MIN. MEGOHMS)	1000
CONTACT RESISTANCE:	
CENTER CONTACT (MAX. MILLIOHMS)	6.0
OUTER CONTACT (MAX. MILLIOHMS)	1.0

### MECHANICAL:

INTERFACE DIMENSIONS	PER MIL-C-39012/SMB SERIES AND S/M MD-121
RECOMMENDED MATING TORQUE	N/A
CENTER CONTACT AXIAL FORCES:	
INSERTION (MAX. OUNCES)	4.0
WITHDRAWAL (MIN. OUNCES)	1.0
CONNECTOR DURABILITY (MIN. CYCLES)	500
CONNECTOR ENGAGEMENT & DISENGAGEMENT	
(MAX. LBS.)	14.0
CENTER CONTACT CAPTIVATION	4.0 LBS. MIN. AXIAL FORCE

### ENVIRONMENTAL:

TEMP. RATING (DEGREES CENTIGRADE)	-65°C TO +165°C
VIBRATION (MIL-STD-202, METHOD 204, CONDITION B)	
SHOCK (MIL-STD-202, METHOD 213, COND. B)	
TEMP. CYCLING (MIL-STD-202, METHOD 107, COND. B, -65°C TO 200°C)	
BAROMETRIC PRESSURE (ALTITUDE) MIL-STD-202, METHOD 105, COND. C. 70,000 FT., 250 VRMS	
HERMETICITY	N/A

CABLE ASSEMBLY INSTRUCTIONS PER S/M 300-80-509

### MATERIAL & FINISH:

BODY, SLEEVE, CLAMP NUT AND WASHER: BRASS PER QQ-B-626, 1/2H, ALLOY 360.  
 CONTACT AND SPRING: BERYLLIUM COPPER PER ASTM-B196, COND. TD04, ALLOY UNS-C17300.  
 INSULATORS: TEFLON PER ASTM-D1710.  
 CLAMP: NICKEL SILVER, 12% LEADED OR EQUIV.  
 GASKET: SYNTHETIC RUBBER (BUNA N) PER MIL-P-5516, CLASS B.

#### FINISH:

ALL METAL PARTS: GOLD PER MIL-G-45204, TYPE I, GRADE C, CLASS 1. THICKNESS .00005-.00010; OVER COPPER PER MIL-C-14550, CLASS 4, THICKNESS .00005-.00020

PM326704	SYM.	DESCRIPTION	DATE	APPR.	CHECKED:	APPROVED:	SOLITRON MICROWAVE 3301 ELECTRONICS WAY WEST PALM BEACH, FL 33407	DRAWING NO. M39012/67-0004
	-	REL. DCN 20442	7/92	R.D.F.	D.W.C.	R.D.F.		
					DATE 7/7/92	DATE 7/7/92		