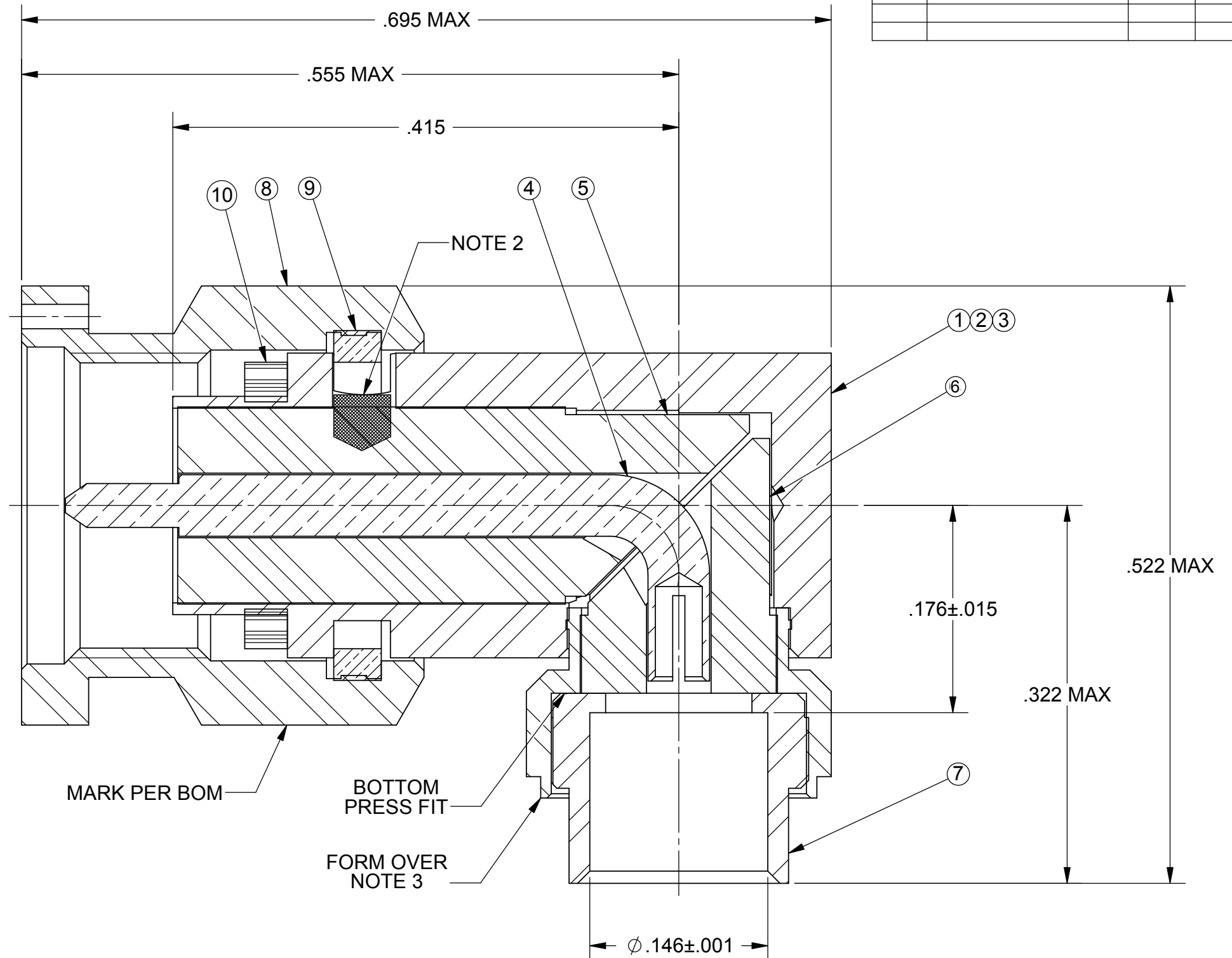
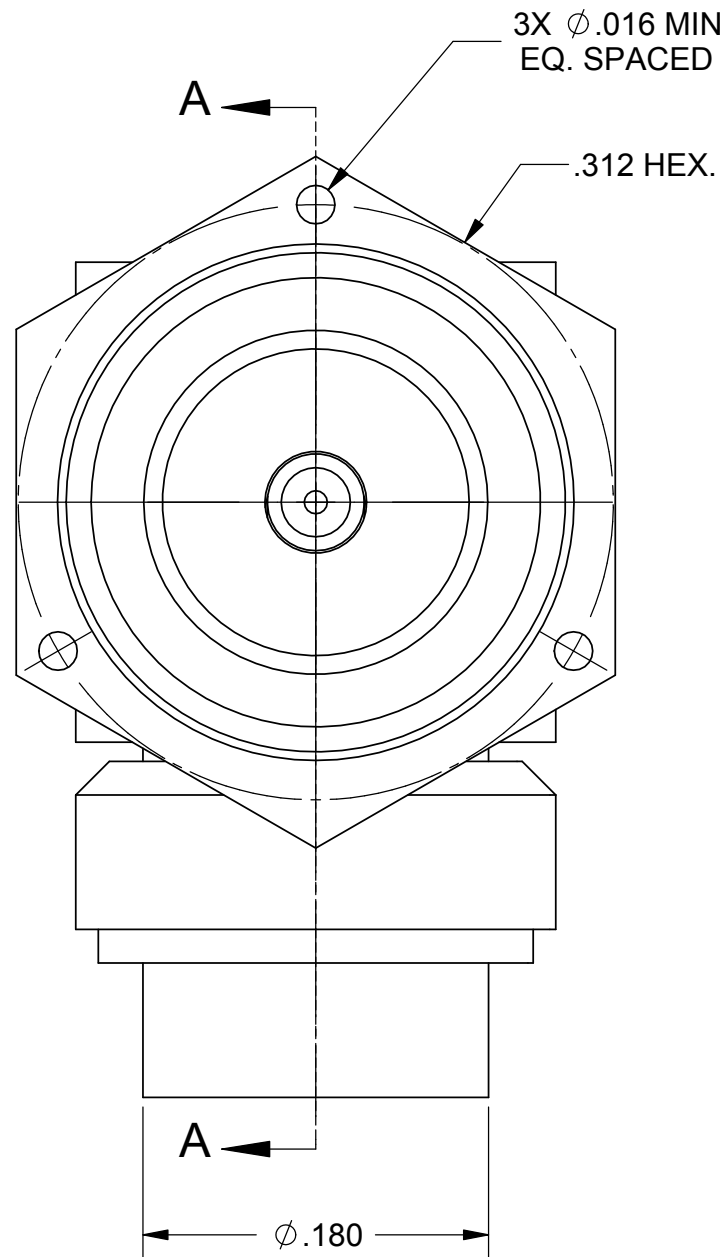


REVISION HISTORY			
REV	DESCRIPTION	DATE	APPROVED
C	DCN 42558	08/16	STW

CUI BASIC



SECTION A-A

- NOTES:
- MATING END DIMENSIONS PER MD-107.
 - DRILL ϕ .0465 \pm .0010 HOLE .025 DEEP INTO INSULATOR AND FILL WITH EPOXY PER 400-05-000.
 - FORM OVER ASSEMBLY SHALL WITHSTAND 25 IN-LBS MIN. TORQUE.

MATERIAL: PER BOM	DIMENSIONS ARE IN INCHES TOLERANCES:	UNLESS OTHERWISE SPECIFIED	SV Microwave, Inc. 2400 Centrepark West Drive, Suite 100 West Palm Beach, FL 33409 TITLE: SMA R/A PLUG SOLDER-ON FOR .141 S.R. CABLE
FINISH: PER BOM	FRACTIONAL: \pm 1/64 ANGULAR: X $^{\circ}$ \pm 1'0" X'X' \pm 15' DECIMAL: X \pm .030 .XX \pm .010 .XXX \pm .005	1) ALL DIMENSIONS ARE AFTER PLATING. 2) BREAK CORNERS & EDGES .005 R. MAX. 3) CHAM. 1ST & LAST THREADS. 4) SURFACE ROUGHNESS 63 \sqrt MIL-STD-10. 5) DIA.'S ON COMMON CENTERS TO BE CONCENTRIC WITHIN .005 T.I.R. 6) REMOVE ALL BURRS	
PROPRIETARY THE INFORMATION CONTAINED IN THIS DRAWING IS THE SOLE PROPERTY OF SV MICROWAVE, INC. ANY REPRODUCTION IN PART OR AS A WHOLE WITHOUT THE WRITTEN PERMISSION OF SV MICROWAVE, INC IS PROHIBITED.	INTERPRET DIMENSIONS AND TOLERANCES PER ASME Y14.5M - 1994 THIRD ANGLE PROJECTION	DRAWN: STW 11/01/05 CHECKED: JMC 11/01/05 APPROVED: JMC 11/01/05 E.M. SIMULATION: N/A	SIZE B CAGE CODE 95077 DWG. NO. M39012/80-3012 SCALE: 1:0.1 SHEET 1 OF 2