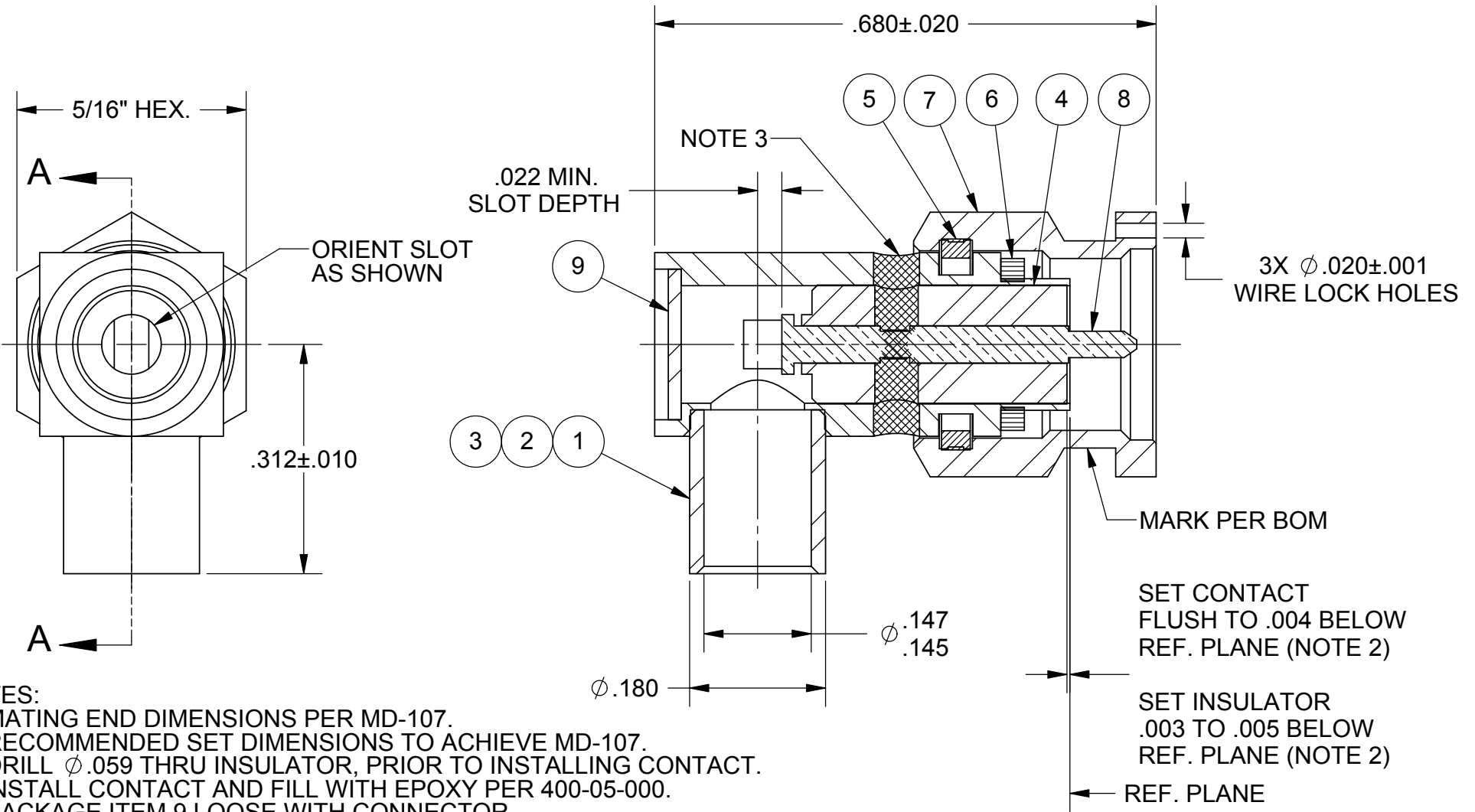


REVISION HISTORY			
REV	DESCRIPTION	DATE	APPROVED
E	REV. DCN 33151	05/05	BRT
F	DCN 42558	08/16	STW



- NOTES:
- 1.) MATING END DIMENSIONS PER MD-107.
 - 2.) RECOMMENDED SET DIMENSIONS TO ACHIEVE MD-107.
 - 3.) DRILL $\phi .059$ THRU INSULATOR, PRIOR TO INSTALLING CONTACT. INSTALL CONTACT AND FILL WITH EPOXY PER 400-05-000.
 - 4.) PACKAGE ITEM 9 LOOSE WITH CONNECTOR.

MATERIAL: PER BOM	DIMENSIONS ARE IN INCHES TOLERANCES:	UNLESS OTHERWISE SPECIFIED	SV Microwave, Inc. 2400 Centrepark West Drive, Suite 100 West Palm Beach, FL 33409 TITLE: SMA PLUG, RIGHT ANGLE SOLDER-ON FOR .141 SEMI-RIGID CABLE SIZE: A CAGE CODE: 95077 DWG. NO.: M39012/80B3004 SCALE: 5:1 SHEET 1 OF 2
FINISH: PER BOM	FRACTIONAL: $\pm 1/64$ ANGULAR: $X^\circ \pm 1'0''$ $X'' \pm 15'$	1) ALL DIMENSIONS ARE AFTER PLATING. 2) BREAK CORNERS & EDGES .005 R. MAX. 3) CHAM. 1ST & LAST THREADS. 4) SURFACE ROUGHNESS $63 \sqrt{\text{MIL-STD-10}}$ 5) DIA.'S ON COMMON CENTERS TO BE CONCENTRIC WITHIN .005 T.I.R. 6) REMOVE ALL BURRS	
PROPRIETARY THE INFORMATION CONTAINED IN THIS DRAWING IS THE SOLE PROPERTY OF SV MICROWAVE, INC. ANY REPRODUCTION IN PART OR AS A WHOLE WITHOUT THE WRITTEN PERMISSION OF SV MICROWAVE, INC IS PROHIBITED.	DECIMAL: X $\pm .030$ XX $\pm .010$ XXX $\pm .005$	DRAWN: BRT 08/14/98	
	INTERPRET DIMENSIONS AND TOLERANCES PER ASME Y14.5M - 1994	CHECKED: RA 04/27/89	
THIRD ANGLE PROJECTION		APPROVED: CT 04/28/89	
		E.M. SIMULATION: N/A	