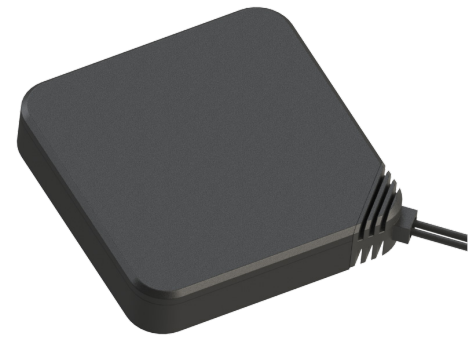




MEA-698-2700-AM

OMNI-DIRECTIONAL LTE ANTENNA

Part #: 100-00143-01



Description

The MEA-698-2700-AM is a dual-port multiband omni-directional LTE antenna. This antenna is designed for 4G LTE covering 698-2700 MHz. The MEA-698-2700-AM is an ultra-low profile rugged antenna used for a variety of cellular LTE applications. The antenna features custom cable length and connectors options. This is an ideal antenna for many IoT installations.

Electrical Specifications

Parameter	Specification
Frequency Range	698-2700 MHz
Impedance	50 Ω
VSWR	≤ 2.0
Gain	4.5 dBi
Radiation	Omnidirectional
Polarization	Vertical

Mechanical Specifications

Parameter	Specification
Antenna Dimensions	101.5 x 77.6 x 15.8 mm
Operating Temperature	- 40 °C to + 80 °C
Antenna Radome Material	PC + PBT
Connector	SMA Male (or other)
Antenna Color	Black

Features

- Dual-Port Multiband
- Omni-Directional LTE Antenna
- Covers Frequencies: 698 - 2700 MHz
- Low Profile
- Rugged Design

Applications

- Cellular, LTE, and WiMax Applications
- Modems, Routers, and Gateways
- Security
- Asset Tracking
- IoT

Radiation Specifications

698-2700 MHz

