

# MIC-710AIL-DVA

## AI Developer Kit Based on NVIDIA® Jetson Nano™



### Features

- Open-frame carrier design
- Embedded with NVIDIA® Jetson Nano™ up to 472 GFLOPS
- Supports 1 x GbE, 1 x USB 3.2 Gen 1 (5 Gbit/s)
- Supports 1 x mPCIe, 1 x M.2 2280
- Supports Allxon 24/7 remote monitoring and OTA deployment

### Specifications

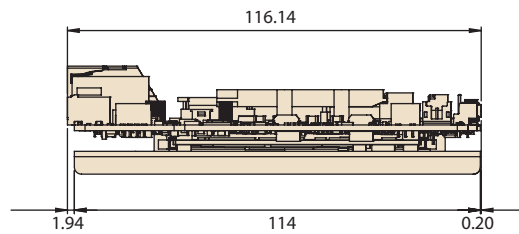
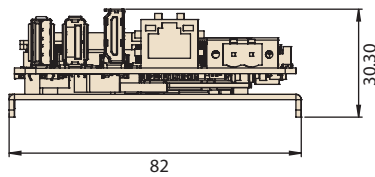
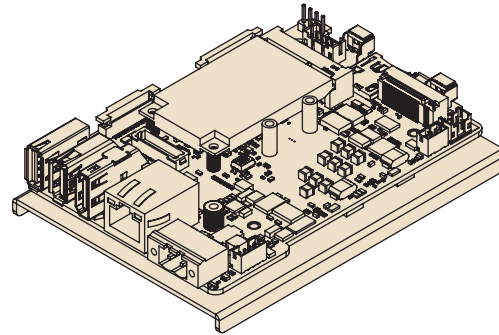
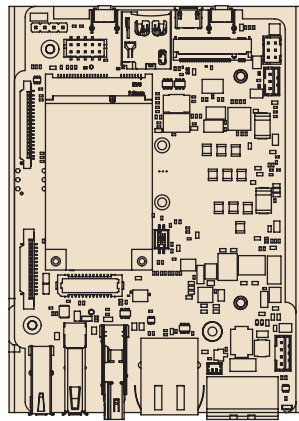
Processor	CPU	Quad-Core Arm® Cortex®-A57 MPCore processor
	GPU	128-core NVIDIA Maxwell™ GPU
	Memory	4GB LPDDR4
	Flash	16G of eMMC
I/O	Ethernet	1 x 10/100/1000 Mbps
	Display	HDMI (Max. resolution 3840x2160 @ 60Hz)
	USB	External: 1 x USB 2.0, 1 x USB 3.2 Gen 1 Internal: 1 x USB 2.0 (by pin header)
	Serial Port	RS-232 (By pin header)
	OTG USB	1 x Micro USB
Expansion	Mini PCIe	1 x mPCIe (Signal: PCIe x1 + USB 2.0)
	SIM Card	1 x Nano SIM
Storage	M.2	1 x M.2 2280 (M-Key, NVMe, Signal: PCIe x4)
	SD Card	1 x Micro SD
Power	Mode	Therminal block, 2-pin, AT
	Voltage	12 ~ 24 V <sub>DC</sub>
Mechanical	Dimensions (W x D x H)	116 x 82 x 30 mm (4.5" x 3.2" x 1.18")
	Weight	150 g (0.33 lb)
BSP	Jetpack	4.6

SW1	Mini PCIe	NVMe M.2
ON*	USB 2.0 + PCIe x1	X
OFF	USB 2.0	PCIe x4

\*Default SW1 is ON

## Dimensions

Unit: mm



## Ordering Information

Part Number	NVIDIA Module	Memory	eMMC	SD Card
MIC-710AIL-DVA1	NVIDIA Jetson Nano	4G	16G	YES
MIC-710AIL-DVA2	NVIDIA Jetson Nano	4G	16G	-

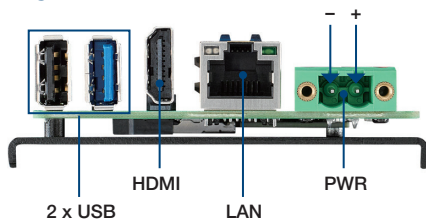
## Packing List

Part Number	Description	Quantity
MIC-710AIL-DVA	AI Developer Kit	1
1652002202	Power connector — 2-pin	1
1700023619-01	Micro USB cable for system recovery	1
1930005673-11	M.2 screw	1
1930008089	Mini PCIe screw	2

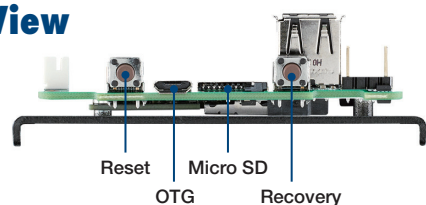
## Optional

Part Number	Description
96PSA-A65W19P2-1	Power Adapter 100-240V 65W 19V
1700001524	Power Cord UL 3P 10A 125V 183cm (US)
170203183C	Power Cord EU 3P 2.5A 250V 183cm (EU)
170203180A	Power Cord BSI 3P 2.5A 250V 183cm (UK)
1702031836	Power Cord SAA 3P 10A 250V 183cm (AU)
1700008921	Power Cord PSE 3P 7A 125V 183cm (Japan)
1700019146	Power Cord CCC 3P 2.5A 250V 183cm (China)

## Front View



## Back View



## Top View

