

Ethernet MCU card with STM32F107VCT6 (100-pin TQFP)



Card information

The **Default MCU card** that comes with the EasyMx PRO™ v7 for STM32® package is shown on **Figure 1**. It contains **STM32F107VCT6** microcontroller with on-chip peripherals and is a great choice for both beginners and professionals. After testing and building the final program, this card can also be taken out of the board socket and used in your final device.

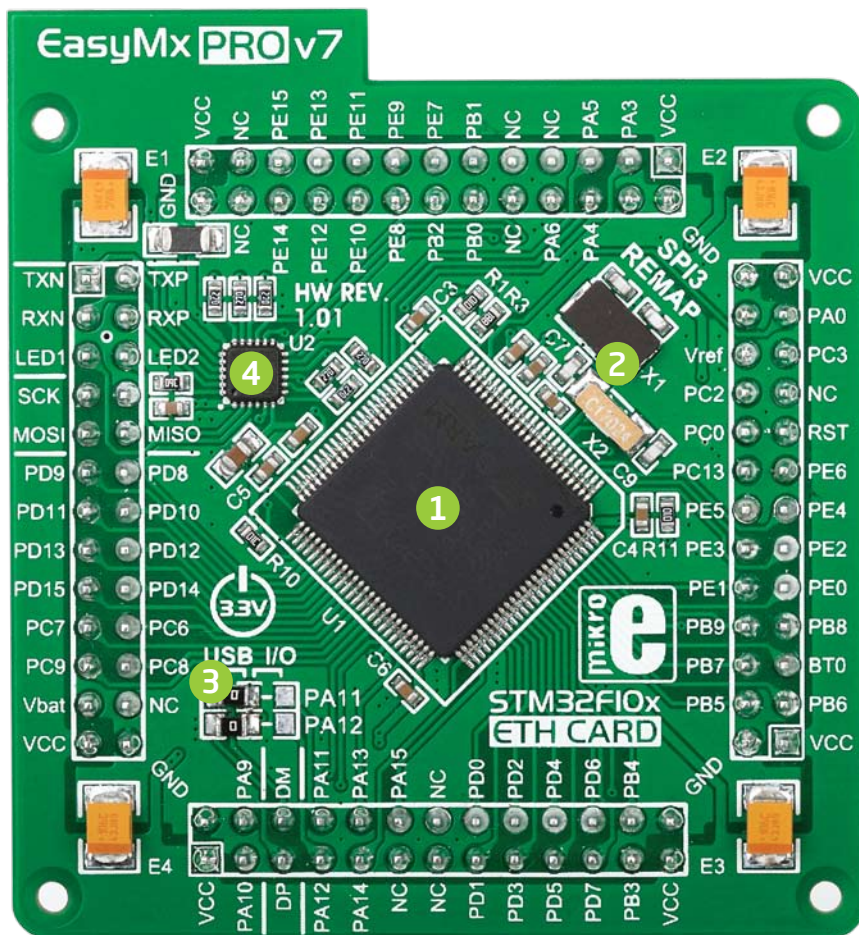


Figure 1: Default MCU card with STM32F107VCT6

- 1** **STM32F107VCT6** is the default chip of EasyMx PRO™ v7 for STM32®. It has **72MHz** frequency, **256K bytes** of Flash memory, **64K bytes** of general-purpose SRAM, integrated Ethernet controller, **USB 2.0** (OTG, Host, Device), 80 General purpose **I/O pins** (mappable on 16 external interrupt), 4x16-bit **timers**, 2x12-bit **A/D** (16 channels), 2x12-bit **D/A**, 5x**UARTs**, internal Real time clock (**RTC**), 2x**I2C**, 3x**SPI** and 2x**CAN** controllers.
- 2** **25MHz crystal oscillator**. We carefully chose the most convenient crystal value that provides clock frequency which can be used directly, or with the PLL multipliers to create higher MCU clock value. MCU card also contains 32.768 kHz crystal oscillator which provides external clock for RTCC module.
- 3** **USB communications lines**. These two jumpers, when in USB position, connect D+ and D- lines of the on-board USB connector with PA11 and PA12 microcontroller pins. Since **STM32F107VCT6** supports USB, jumpers are in USB position.
- 4** **Ethernet transceiver**. Default MCU card contains single-chip Ethernet physical (PHY) layer transceiver which provides additional Ethernet functionality to **STM32F107VCT6** controller

Card dimensions

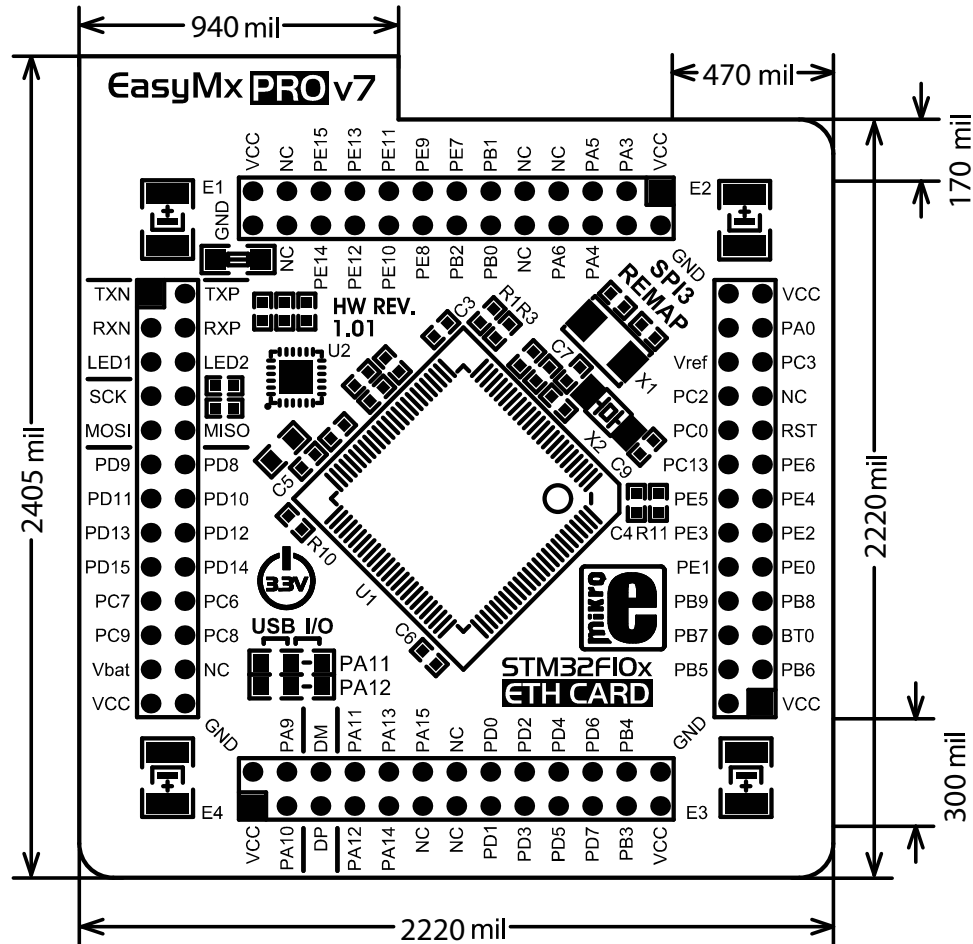


Figure 3: MCU card dimensions. Values are in mils.