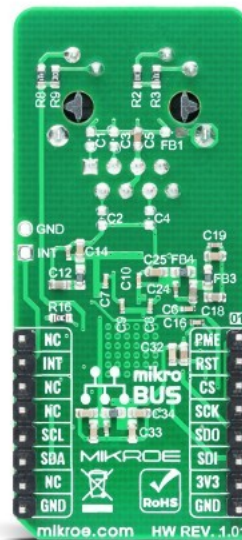


## ETH 3 Click



PID: MIKROE-2850

**ETH 3 Click** is a compact add-on board that contains Ethernet Controller & PHY for embedded applications. This board features the [LAN9250](#), a fully featured 10/100 Ethernet controller that provides performance, flexibility, ease of integration, and system cost control from [Microchip Technology](#). It complies with the IEEE802.3 (Full/Half-Duplex 10BASE-T and 100BASE-TX) Ethernet protocol, IEEE 802.3az Energy Efficient Ethernet (EEE)(100Mbps only), and the IEEE 1588v2 precision time protocol. It also includes an integrated Ethernet MAC and PHY with a high-performance SRAM-like slave interface and large transmit and receive data FIFOs to accommodate high latency applications. This Click board™ is suitable for industrial automation systems, cable, satellite, and IP set-top boxes, VoIP/Video phone systems, home gateways, test and measurement equipment, and more.

ETH 3 Click is supported by a [mikroSDK](#) compliant library, which includes functions that simplify software development. This [Click board™](#) comes as a fully tested product, ready to be used on a system equipped with the [mikroBUS™](#) socket.

Mikroe produces entire development toolchains for all major microcontroller architectures.

Committed to excellency, we are dedicated to helping engineers bring the project development up to speed and achieve outstanding results.



ISO 27001: 2013 certification of informational security management system.  
 ISO 14001: 2015 certification of environmental management system.  
 OHSAS 18001: 2008 certification of occupational health and safety management system.



ISO 9001: 2015 certification of quality management system (QMS).

## Specifications

Type	Ethernet
Applications	Can be used for industrial automation systems, cable, satellite, and IP set-top boxes, VoIP/Video phone systems, home gateways, test and measurement equipment, and more.
On-board modules	LAN9250 - fully-featured high-performance 10/100 Ethernet controller designed for embedded applications, where performance and flexibility are required, from Microchip Technology
Key Features	16-bit 10/100 industrial Ethernet controller & PHY, high performance, compliant with energy efficient Ethernet, Wake on LAN (WoL) support, SPI/SQI/I2C interface support, and more.
Interface	I2C,SPI
ClickID	No
Compatibility	mikroBUS
Click board size	L (57.15 x 25.4 mm)
Input Voltage	3.3V

## Resources

[mikroBUS™](#)

[mikroSDK](#)

[Click board™ Catalog](#)

[Click boards™](#)

## Downloads

[ETH 3 click 2D and 3D files](#)

[LAN9250 datasheet](#)

[ETH 3 click schematic](#)

Mikroe produces entire development toolchains for all major microcontroller architectures.

Committed to excellency, we are dedicated to helping engineers bring the project development up to speed and achieve outstanding results.



ISO 27001: 2013 certification of informational security management system.  
 ISO 14001: 2015 certification of environmental management system.  
 OHSAS 18001: 2008 certification of occupational health and safety management system.



ISO 9001: 2015 certification of quality management system (QMS).