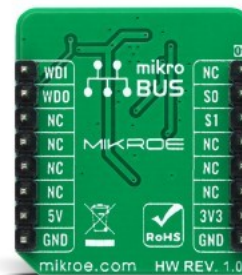
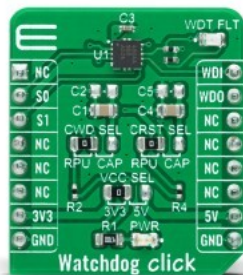


Watchdog Click



PID: MIKROE-4416

Watchdog Click is a compact add-on board that contains a simple countdown timer for a wide variety of applications. This board features the TPS3430, a standalone watchdog timer with a programmable watchdog window and programmable reset delay from Texas Instruments. The TPS3430 has the watchdog output reset delay set by factory-programmed default delay settings or programmed by an external capacitor. It achieves 2.5% timing accuracy at the typical temperature of 25°C and can be disabled via two SET pins to avoid undesired watchdog timeouts during the development process or Power-On. This Click board™ can be used as a countdown timer in MCU, DSP, FPGA, ASIC, and many more.

Watchdog Click is supported by a [mikroSDK](#) compliant library, which includes functions that simplify software development. This [Click board™](#) comes as a fully tested product, ready to be used on a system equipped with the [mikroBUS™](#) socket.

Mikroe produces entire development toolchains for all major microcontroller architectures.

Committed to excellency, we are dedicated to helping engineers bring the project development up to speed and achieve outstanding results.



ISO 27001: 2013 certification of informational security management system.
 ISO 14001: 2015 certification of environmental management system.
 OHSAS 18001: 2008 certification of occupational health and safety management system.



ISO 9001: 2015 certification of quality management system (QMS).

Specifications

Type	RTC
Applications	Can be used as a countdown timer in MCU, DSP, FPGA, ASIC, and many more.
On-board modules	TPS3430 - standalone watchdog timer with a programmable watchdog window and reset delay from Texas Instruments
Key Features	User-programmable watchdog window and reset delay, disable feature, accuracy, high-precision, and more.
Interface	GPIO
ClickID	No
Compatibility	mikroBUS
Click board size	S (28.6 x 25.4 mm)
Input Voltage	3.3V or 5V

Resources

[mikroBUS™](#)

[mikroSDK](#)

[Click board™ Catalog](#)

[Click Boards™](#)

Downloads

[Watchdog click 2D and 3D files](#)

[TPS3430 datasheet](#)

[Watchdog click schematic](#)

[Watchdog click example on Libstock](#)

Mikroe produces entire development toolchains for all major microcontroller architectures.

Committed to excellency, we are dedicated to helping engineers bring the project development up to speed and achieve outstanding results.



ISO 27001: 2013 certification of informational security management system.
 ISO 14001: 2015 certification of environmental management system.
 OHSAS 18001: 2008 certification of occupational health and safety management system.



ISO 9001: 2015 certification of quality management system (QMS).