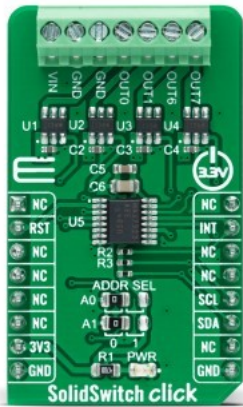


SolidSwitch Click



PID: MIKROE-4569

SolidSwitch Click is a compact add-on board that contains load switch devices. This board features the TPS22918, four single-channel load switches from Texas Instruments. Every switch includes an N-channel MOSFET that operates over an input voltage range up to 5.5V and can support a maximum continuous current of 2 A. The switches are controlled by an ON/OFF input, performed by MAX7323, an I2C configurable port expander capable of interfacing directly with low-voltage control signals. This Click board™ is suitable for industrial systems, set-top boxes, electronic point of scale, and various other applications.

SolidSwitch Click is supported by a [mikroSDK](#) compliant library, which includes functions that simplify software development. This [Click board™](#) comes as a fully tested product, ready to be used on a system equipped with the [mikroBUS™](#) socket.

Mikroe produces entire development toolchains for all major microcontroller architectures.

Committed to excellency, we are dedicated to helping engineers bring the project development up to speed and achieve outstanding results.



ISO 27001: 2013 certification of informational security management system.
 ISO 14001: 2015 certification of environmental management system.
 OHSAS 18001: 2008 certification of occupational health and safety management system.



ISO 9001: 2015 certification of quality management system (QMS).

Specifications

Type	Relay
Applications	Can be used for industrial systems, set-top boxes, electronic point of scale, and various other applications.
On-board modules	TPS22918 - 5.5V 2A load switch from Texas Instruments
Key Features	Four integrated single channel load switches, flexible design, 2A maximum switch current, and more.
Interface	I2C
ClickID	No
Compatibility	mikroBUS
Click board size	M (42.9 x 25.4 mm)
Input Voltage	3.3V, External

Resources

[mikroBUS™](#)

[mikroSDK](#)

[Click board™ Catalog](#)

[Click boards™](#)

Downloads

[SolidSwitch click 2D and 3D files](#)

[TPS22918 datasheet](#)

[MAX7323 datasheet](#)

[SolidSwitch click schematic](#)

[SolidSwitch click example on Libstock](#)

Mikroe produces entire development toolchains for all major microcontroller architectures.

Committed to excellency, we are dedicated to helping engineers bring the project development up to speed and achieve outstanding results.



ISO 27001: 2013 certification of informational security management system.
 ISO 14001: 2015 certification of environmental management system.
 OHSAS 18001: 2008 certification of occupational health and safety management system.



ISO 9001: 2015 certification of quality management system (QMS).