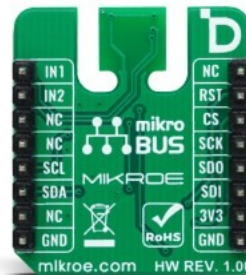
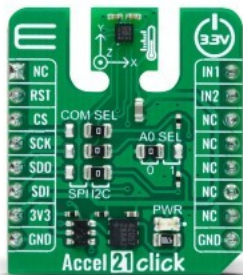


Accel 21 Click



PID: MIKROE-5530

Accel 21 Click is a compact add-on board that contains an acceleration sensor. This board features the [MIS2DH](#), a high-performance three-axis accelerometer from [STMicroelectronics](#). The MIS2DH allows selectable full-scale acceleration measurements in ranges of $\pm 2g$, $\pm 4g$, $\pm 8g$, or $\pm 16g$ in three axes with a configurable host interface that supports both SPI and I2C serial communication. It also supports high-resolution and low-power operating modes, allowing maximum flexibility to meet various use case needs. This Click board™ is suitable for multiple applications such as motion-activated functions, posture and free-fall detection, and many more.

Accel 21 Click is supported by a [mikroSDK](#) compliant library, which includes functions that simplify software development. This [Click board™](#) comes as a fully tested product, ready to be used on a system equipped with the [mikroBUS™](#) socket.

Mikroe produces entire development toolchains for all major microcontroller architectures.

Committed to excellency, we are dedicated to helping engineers bring the project development up to speed and achieve outstanding results.



ISO 27001: 2013 certification of informational security management system.
 ISO 14001: 2015 certification of environmental management system.
 OHSAS 18001: 2008 certification of occupational health and safety management system.



ISO 9001: 2015 certification of quality management system (QMS).

Specifications

Type	Motion
Applications	Can be used for multiple applications such as motion-activated functions, posture and free-fall detection, and more
On-board modules	MIS2DH - digital triaxial acceleration sensor from STMicroelectronics
Key Features	High performance, MEMS sensor with on-chip signal processing, low power consumption, programmable interrupts, selectable interface, 6D/4D orientation detection, motion and free-fall detection, and more
Interface	I2C,SPI
ClickID	Yes
Compatibility	mikroBUS
Click board size	S (28.6 x 25.4 mm)
Input Voltage	3.3V

Resources

[mikroBUS™](#)

[mikroSDK](#)

[Click board™ Catalog](#)

[Click boards™](#)

[ClickID](#)

Downloads

[Accel 21 click 2D and 3D files](#)

[MIS2DH datasheet](#)

[Accel 21 click schematic](#)

[Accel 21 click example on Libstock](#)

Mikroe produces entire development toolchains for all major microcontroller architectures.

Committed to excellency, we are dedicated to helping engineers bring the project development up to speed and achieve outstanding results.



ISO 27001: 2013 certification of informational security management system.
 ISO 14001: 2015 certification of environmental management system.
 OHSAS 18001: 2008 certification of occupational health and safety management system.



ISO 9001: 2015 certification of quality management system (QMS).