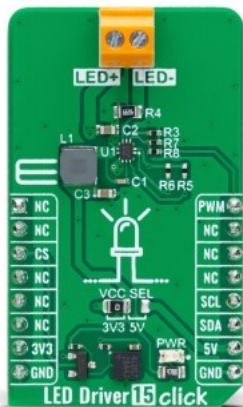


## LED Driver 15 Click



PID: MIKROE-5583

**LED Driver 15 Click** is a compact add-on board that simplifies the control of multiple LEDs. This board features the [MP3309C](#), a fully integrated synchronous boost white LED driver with an I2C interface from [Monolithic Power Systems](#). The MP3309C offers high efficiency, delivers up to 40mA of LED current, and operates from a voltage of mikroBUS™ power rails, supporting up to 8 white LEDs in series. It also features a programmable switching frequency to optimize efficiency, supports analog and PWM dimming, and has multiple built-in protection functions that protect the circuit during abnormalities. This Click board™ is suitable for backlight applications for various amusement products, LED status signalization, home automation projects, and other applications that need illumination with white light to conduct tasks like detection, recognition, and handling.

LED Driver 15 Click is supported by a [mikroSDK](#) compliant library, which includes functions that simplify software development. This [Click board™](#) comes as a fully tested product, ready to be used on a system equipped with the [mikroBUS™](#) socket.

Mikroe produces entire development toolchains for all major microcontroller architectures.

Committed to excellency, we are dedicated to helping engineers bring the project development up to speed and achieve outstanding results.



ISO 27001: 2013 certification of informational security management system.  
 ISO 14001: 2015 certification of environmental management system.  
 OHSAS 18001: 2008 certification of occupational health and safety management system.



ISO 9001: 2015 certification of quality management system (QMS).

## Specifications

Type	LED Drivers
Applications	Can be used for various amusement products, LED status signalization, home automation projects, and other applications
On-board modules	MP3309C - synchronous boost white LED driver from Monolithic Power Systems
Key Features	WLED driver, programmable switching frequency, digitally set LED current, I2C interface, analog and PWM dimming, high efficiency and performance, low power consumption, protection features, and more
Interface	I2C,PWM
ClickID	Yes
Compatibility	mikroBUS
Click board size	M (42.9 x 25.4 mm)
Input Voltage	3.3V or 5V

## Resources

[mikroBUS™](#)

[mikroSDK](#)

[Click board™ Catalog](#)

[Click boards™](#)

[ClickID](#)

## Downloads

[LED Driver 15 click example on Libstock](#)

[LED Driver 15 click 2D and 3D files](#)

[MP3309C datasheet](#)

[LED Driver 15 click schematic](#)

Mikroe produces entire development toolchains for all major microcontroller architectures.

Committed to excellency, we are dedicated to helping engineers bring the project development up to speed and achieve outstanding results.



ISO 27001: 2013 certification of informational security management system.  
 ISO 14001: 2015 certification of environmental management system.  
 OHSAS 18001: 2008 certification of occupational health and safety management system.



ISO 9001: 2015 certification of quality management system (QMS).