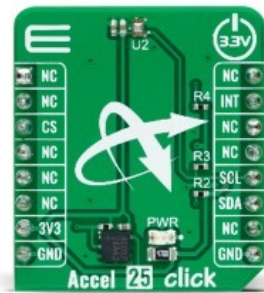


## Accel 25 Click



PID: MIKROE-5602

**Accel 25 Click** is a compact add-on board that contains an acceleration sensor. This board features the [MXC4005XC](#), a 12-bit three-axis thermal accelerometer from [MEMSIC](#). It allows selectable full-scale acceleration measurements of  $\pm 2g$ ,  $\pm 4g$ , or  $\pm 8g$  in three axes with a compatible I2C serial interface with 400KHz fast mode operation. Alongside low offset and temperature signal with high accuracy, the MXC6655XA also detects six orientation positions, X/Y shake, and shake directions with an appropriate interrupt signal for these states. This Click board™ is suitable for various information appliances, consumer electronics, household safety applications, and more.

Accel 25 Click is supported by a [mikroSDK](#) compliant library, which includes functions that simplify software development. This [Click board™](#) comes as a fully tested product, ready to be used on a system equipped with the [mikroBUS™](#) socket.

Mikroe produces entire development toolchains for all major microcontroller architectures.

Committed to excellency, we are dedicated to helping engineers bring the project development up to speed and achieve outstanding results.



ISO 27001: 2013 certification of informational security management system.  
 ISO 14001: 2015 certification of environmental management system.  
 OHSAS 18001: 2008 certification of occupational health and safety management system.



ISO 9001: 2015 certification of quality management system (QMS).

## Specifications

Type	Motion
Applications	Can be used for a wide range of information appliances, consumer electronics, household safety applications, and more
On-board modules	MXC4005XC - digital triaxial acceleration from MEMSIC
Key Features	Low power consumption, high performance and resolution, MEMS sensor with on-chip signal processing, no moving parts, 12-bit signal output for X, Y and Z axes, 6-position orientation detection, shake detection, I2C interface, and more
Interface	I2C
ClickID	Yes
Compatibility	mikroBUS
Click board size	S (28.6 x 25.4 mm)
Input Voltage	3.3V

## Resources

[mikroBUS™](#)

[mikroSDK](#)

[Click board™ Catalog](#)

[Click boards™](#)

[ClickID](#)

## Downloads

[Accel 25 click example on Libstock](#)

[Accel 25 click 2D and 3D files](#)

[MXC4005XC datasheet](#)

[Accel 25 click schematic](#)

Mikroe produces entire development toolchains for all major microcontroller architectures.

Committed to excellency, we are dedicated to helping engineers bring the project development up to speed and achieve outstanding results.



ISO 27001: 2013 certification of informational security management system.  
 ISO 14001: 2015 certification of environmental management system.  
 OHSAS 18001: 2008 certification of occupational health and safety management system.



ISO 9001: 2015 certification of quality management system (QMS).