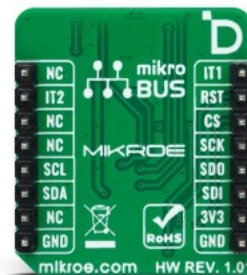
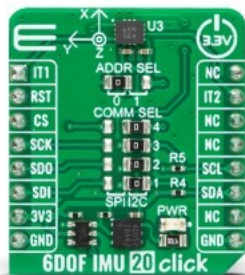


6DOF IMU 20 Click



PID: MIKROE-5606

6DOF IMU 20 Click is a compact add-on board with a 6-axis inertial measurement unit. This board features the [BMI323](#), a high-performance, low-power inertial measurement unit (IMU) from [Bosch Sensortec](#). The BMI323 combines precise acceleration and angular rate (gyroscopic) measurement with intelligent integrated features triggered by motion. Besides 16-bit triaxial gyro and accel with a configurable range and host interface that supports SPI and I2C serial communication, it also features 2Kb-byte FIFO that can lower the traffic on the serial bus interface. On-chip interrupt engine and integrated smart features make this Click board™ an excellent choice for always-on applications like motion detection, step detector, plug 'n' play step counter, orientation and flat detection, single/double/triple tap detection, and many more.

6DOF IMU 20 Click is supported by a mikroSDK compliant library, which includes functions that simplify software development. This Click board™ comes as a fully tested product, ready for use on a system equipped with the mikroBUS™ socket.

Mikroe produces entire development toolchains for all major microcontroller architectures.

Committed to excellency, we are dedicated to helping engineers bring the project development up to speed and achieve outstanding results.



ISO 27001: 2013 certification of informational security management system.
 ISO 14001: 2015 certification of environmental management system.
 OHSAS 18001: 2008 certification of occupational health and safety management system.



ISO 9001: 2015 certification of quality management system (QMS).

Specifications

Type	Motion
Applications	Can be used for always-on applications like motion detection, step detector, plug 'n' play step counter, orientation and flat detection, single/double/triple tap detection, and more
On-board modules	BMI323 - versatile 6DoF sensor module from Bosch Sensortec
Key Features	Low power consumption, selectable interface, on-chip motion-triggered interrupt features, configurable accel/gyro range, 2KB on-chip FIFO, fast offset error compensation, high sensitivity and performance, and more
Interface	I2C,SPI
ClickID	Yes
Compatibility	mikroBUS
Click board size	S (28.6 x 25.4 mm)
Input Voltage	3.3V

Resources

[mikroBUS™](#)

[mikroSDK](#)

[Click board™ Catalog](#)

[Click boards™](#)

[ClickID](#)

Downloads

[6DOF IMU 20 click example on Libstock](#)

[6DOF IMU 20 click schematic](#)

[BMI323 datasheet](#)

[6DOF IMU 20 click 2D and 3D files](#)

Mikroe produces entire development toolchains for all major microcontroller architectures.

Committed to excellency, we are dedicated to helping engineers bring the project development up to speed and achieve outstanding results.



ISO 27001: 2013 certification of informational security management system.
 ISO 14001: 2015 certification of environmental management system.
 OHSAS 18001: 2008 certification of occupational health and safety management system.



ISO 9001: 2015 certification of quality management system (QMS).