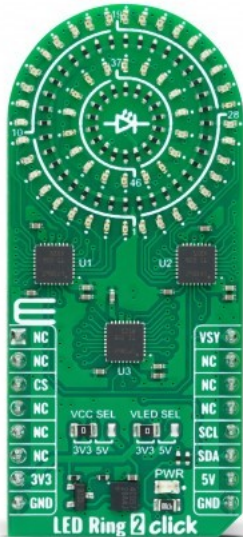


LED Ring 2 Click



PID: MIKROE-5634

LED Ring 2 Click is a compact add-on board that provides a circular-shaped electronic lighting solution. This board features three I2C-configurable high-performance LED matrix drivers, the LP5862 from Texas Instruments. The LP5862 integrates 18 constant current sinks for driving 18 yellow LEDs. With the help of two additional LP5862 drivers, it is possible to realize, as shown on this board, a solution of 54 yellow LEDs arranged in a circular pattern. In addition, it also provides excellent PWM dimming effects. This Click board™ is suitable for animation and indication purposes for amusement products, LED status signalization, home automation projects, and many more.

LED Ring 2 Click is supported by a [mikroSDK](#) compliant library, which includes functions that simplify software development. This [Click board™](#) comes as a fully tested product, ready to be used on a system equipped with the [mikroBUS™](#) socket.

Mikroe produces entire development toolchains for all major microcontroller architectures.

Committed to excellency, we are dedicated to helping engineers bring the project development up to speed and achieve outstanding results.



ISO 27001: 2013 certification of informational security management system.
 ISO 14001: 2015 certification of environmental management system.
 OHSAS 18001: 2008 certification of occupational health and safety management system.



ISO 9001: 2015 certification of quality management system (QMS).

Specifications

Type	I2C,LED Matrix
Applications	Can be used for animation and indication purposes for amusement products, LED status signalization, home automation projects, and more
On-board modules	LP5862 - LED matrix driver from Texas Instruments
Key Features	18 constant current sinks, 54 LEDs arranged in a circular pattern for animation and indication purposes, wide operating voltage, high performance, high efficiency PWM dimming, low power consumption, fully addressable SRAM to minimize data traffic, I2C interface, and more
Interface	I2C
ClickID	Yes
Compatibility	mikroBUS
Click board size	L (57.15 x 25.4 mm)
Input Voltage	3.3V or 5V

Resources

[mikroBUS™](#)

[mikroSDK](#)

[Click board™ Catalog](#)

[Click boards™](#)

[ClickID](#)

Downloads

[LED Ring 2 click example on Libstock](#)

[LED Ring 2 click 2D and 3D files](#)

[LED Ring 2 click schematic](#)

[LP5862 datasheet](#)

Mikroe produces entire development toolchains for all major microcontroller architectures.

Committed to excellency, we are dedicated to helping engineers bring the project development up to speed and achieve outstanding results.



ISO 27001: 2013 certification of informational security management system.
 ISO 14001: 2015 certification of environmental management system.
 OHSAS 18001: 2008 certification of occupational health and safety management system.



ISO 9001: 2015 certification of quality management system (QMS).