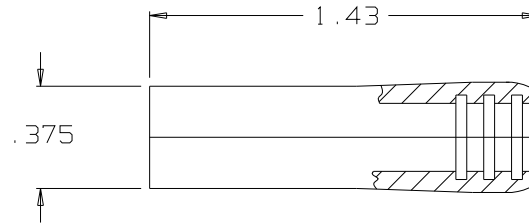
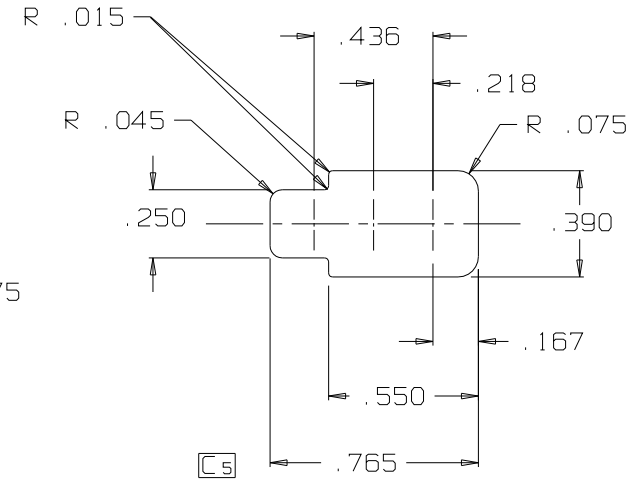


**B MJ-123**

**B1**



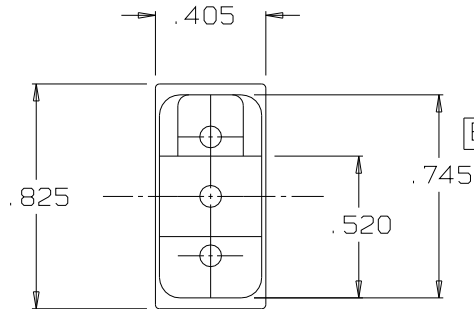
**B2**



EARCUP SOCKET DIMENSIONS  
DIMENSIONS IN THIS VIEW +/- .003

**A**

**B4**



**B3**

**C2**  
MC-121-2  
PIN ASSY

**C3**  
MJ-101-1  
CONTACT (2X)  
(NOT SHOWN)

**C4**

MC-121-3  
SHELL

MJ-123

Ø .175

**NOTES**

1. MATERIALS:

- SHELL - NYLON ZYTEL 101
- SCREWS - STAINLESS STEEL
- SPRINGWASHERS - STAINLESS STEEL **C1**
- NUTS - STAINLESS STEEL
- JACK CONTACTS - BeCu C17200
- PIN CONTACT - BeCu C17300

THIS DOCUMENT CONTAINS PROPRIETARY INFORMATION OF NEXUS, INCORPORATED AND SUCH INFORMATION MAY NOT BE DISCLOSED TO OTHERS FOR ANY PURPOSE OR USED FOR ANY PURPOSE WITHOUT THE WRITTEN CONSENT OF NEXUS.

<b>C</b>	5) ADDED "SOCKET" 4) ADDED MC-121-3 3) ADDED MJ-101-1 2) ADDED MC-121-2 1) WAS SPRING STEEL	0180	7/13/95	
<b>B</b>	4) .825 WAS .835 3) .745 WAS .750 2) .375 WAS .380 1) 1.43 WAS 1.45	0127	5/2/94	L.S.
<b>A</b>	VIEW ADDED		2/18/94	F
LET.	REVISION	CN #	DATE	CHK.

DWN. BY M.N.F.	DATE 5/17/95
CHECKED BY L.SMITH	DATE 5/17/95
APPR. BY L.SMITH	DATE 5/17/95
UNLESS OTHERWISE SPECIFIED DIMENSIONS ARE IN INCHES TOLERANCES ON FRACTIONS DECIMALS ANGLES _____ +/- .005 _____	

MATERIAL SEE NOTE 1	
FINISH _____	
WEIGHT _____	SCALE 2:1
TITLE <b>MICROPHONE CONNECTOR</b>	
DO NOT SCALE DWG.	SHEET 1 OF 1

**NEXUS**  
STAMFORD, CONN

SIZE **B** DWG. NO. **MJ-123**