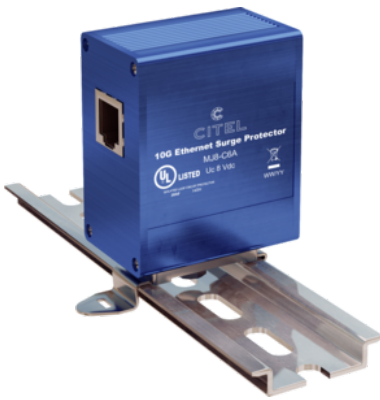
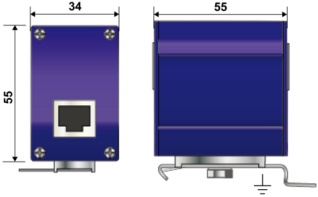
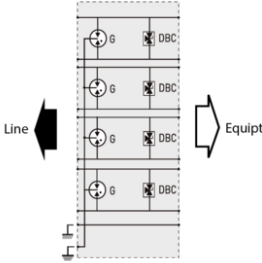


MJ8-C6A



- Cat.6a Ethernet Surge Protector
- Hybrid GDT and Diode Technology
- 10/100/1000Mbps Compatible
- Bi-Directional Protection
- 16kA Max. Surge Current Rating
- DIN Rail, Screw Lug, and Flange Mounting
- UL497B Listed



	Electrical Characteristics	
	Insertion loss	< 1 dB
	Impulse current 2 x 10/350µs Test - D1 Category	limp 500 A
	NOMINAL DC LINE VOLTAGE	Vdc 5
	MAX. DC LINE VOLTAGE	Vdc 8
	WIRES	8W+Shield+Ground
	LINE CURRENT MAX (A)	1
	AMBIENT MIN (C)	-40
	AMBIENT MAX (C)	+85
	PROTECTION LEVEL (V)	20
	IMAX8/20µs (kA)	16
	MAX. DATA RATE	Gbps 10
	MAX. FREQUENCY	Mhz 500
 <p>G: 3-electrode GDT DBC: 3-pole Low capacitance diode</p>	Mechanical Characteristics	
	Weight	0.106 kg
	TECHNOLOGY	SAD-GDT
	NETWORK CONFIGURATION	Single C6A Line
	CONNECTOR TYPE	Shielded RJ45
	PIN OUT	[1-2][3-6][4-5][7-8]
	NEMA RATING (IP RATING)	NEMA 2 (IP20)
	DIMENSIONS	See diagram
Standards		
	Certification	UL 497B
	UL STANDARD	UL497B
	UL CATEGORY	QVQG
	UL FILE NUMBER	E184939
	STANDARDS	IEC 61643-21, NOM-003-SCFI-2014, NOM-001-SCFI-1993
	ENVIRONMENTAL STANDARDS	ROHS
Part number		
	581540	

