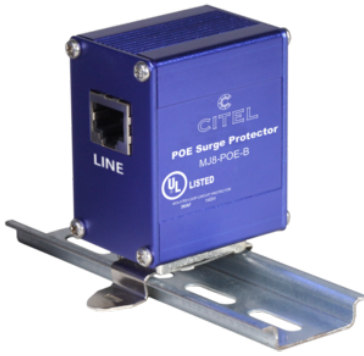
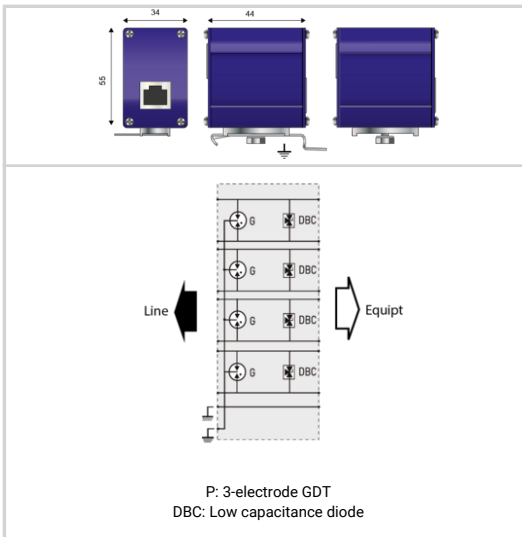


MJ8-POE-B



- POE++ Mode B compatible Surge Protector
- Cat. 5e compatible
- Shielded RJ45 connectors
- 16 kA maximum surge discharge capability
- Max Transmission up to 1Gbps
- Max Bandwidth up to 100 MHz
- UL497B



Electrical Characteristics	
Insertion loss	< 1 dB
Impulse current 2 x 10/350µs Test - D1 Category	limp 500 A
MAX. DC LINE VOLTAGE	Vdc 60- Pins [4,5,7,8], 7.5 Pins [1,2,3,6]
WIRES	8W+Shield+Ground
LINE CURRENT MAX	(A) 1.6
POWER RATING	(W) 100
AMBIENT MIN	(C) -40
AMBIENT MAX	(C) +85
PROTECTION LEVEL	(V) 70
IMAX8/20µs	(kA) 16
MAX. DATA RATE	Gbps 1
MAX. FREQUENCY	Mhz 100
Mechanical Characteristics	
Weight	0.115 kg
TECHNOLOGY	SAD-GDT
NETWORK CONFIGURATION	Single POE Line
CONNECTOR TYPE	Shielded RJ45
PIN OUT	[1-2][3-6][4-5][7-8]
NEMA RATING (IP RATING)	NEMA 2 (IP20)
DIMENSIONS	See diagram
Standards	
Certification	UL 497B
UL STANDARD	UL497B
UL CATEGORY	QVGQ
UL FILE NUMBER	E184939
STANDARDS	NOM-003-SCFI-2014, NOM-001-SCFI-1993
ENVIRONMENTAL STANDARDS	ROHS
Part number	
581518	

