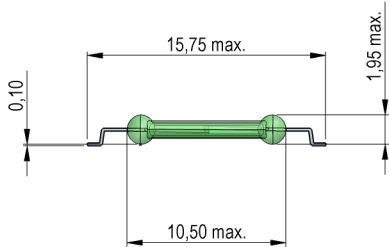
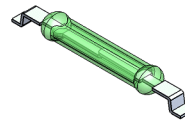


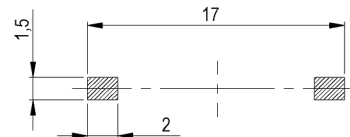
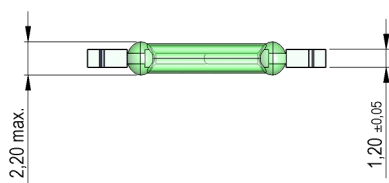
Dimensions mm[inch]
tolerances according to DIN ISO 2768-m
Toleranzen gem. DIN ISO 2768-m



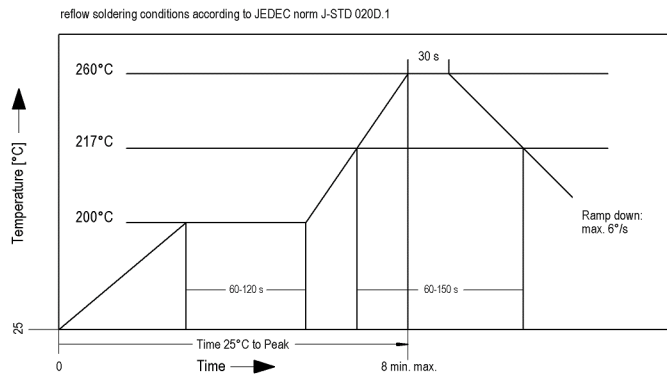
Isometric
Scale 2:1
Maßstab 2:1



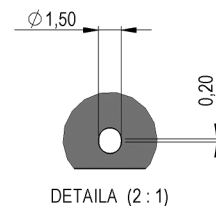
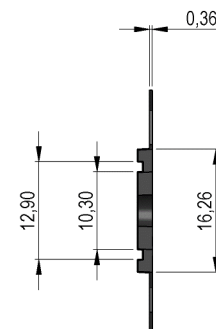
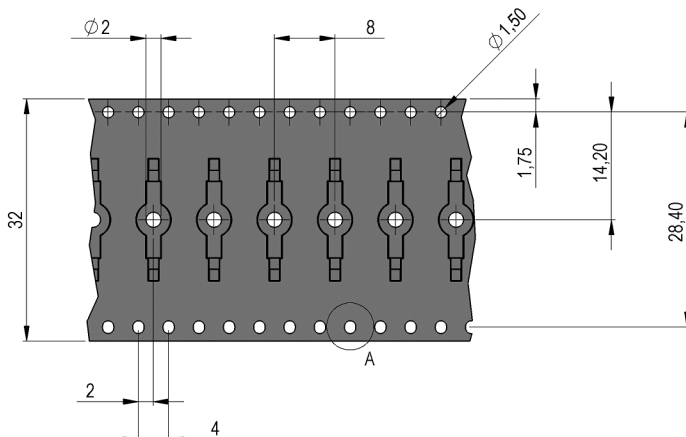
Recommended PCB Pad Layout



Solder Reflow Profile



Packaging





Europe: +49 / 7731 8399 0 | Email: info@standexmeder.com
 USA: +1 / 508 295 0771 | Email: salesusa@standexmeder.com
 Asia: +852 / 2955 1682 | Email: salesasia@standexmeder.com

Item No.:
9231350024
 Item:
MK23-35-D-2

| Magnetic properties | Conditions | Min | Typ | Max | Unit |
|---------------------------------------|---|---------------|-----|-----|------|
| Pull-In | at 20°C | 57 | | 80 | |
| Test equipment | | KMS-11 + AP51 | | | |
| Pull-In in milliTesla (modified conta | MS150 - phys. caused tolerance +/- 0,1mT | 2,2 | | 3,4 | mT |
| Test equipment | | MS-150 | | | |

| Contact data 35 | Conditions | Min | Typ | Max | Unit |
|------------------------------|--|--------|-----|------|------|
| Contact - No. | | 35 | | | |
| Contact-form | | A - NO | | | |
| Contact rating | Any DC combination of V & A not to exceed their individual max.'s | | | 15 | W |
| Switching voltage (> 9 AT) | DC or Peak AC | | | 200 | V |
| Switching current | DC or Peak AC | | | 1 | A |
| Carry current | DC or Peak AC | | | 1,25 | A |
| Contact resistance static | Measured with 40% overdrive Start Value | | | 150 | mOhm |
| Breakdown voltage (10-30 AT) | according to IEC 255-5 | 220 | | | VDC |

| Special Product Data | Conditions | Min | Typ | Max | Unit |
|----------------------|------------|-----|-----|-----|------|
| Approval | | | | | |

| Environmental data | Conditions | Min | Typ | Max | Unit |
|-----------------------|-----------------------------|--------------|-----|-----|------|
| Shock | 1/2 sine wave duration 11ms | | | 30 | g |
| Vibration | from 10 - 2000 Hz | | | 20 | g |
| Operating temperature | | -40 | | 130 | °C |
| Storage temperature | | -55 | | 130 | °C |
| Washability | | fully sealed | | | |

Modifications in the sense of technical progress are reserved

Designed at: 07.02.08 Designed by: WKOVACS
 Last Change at: 28.05.15 Last Change by: THAUKE

Approval at: 24.11.08 Approval by: JHEYDER
 Approval at: 28.05.15 Approval by: JHEYDER

Version: 8