



Board SMT to Cable

.050"

9 thru 51 Contacts

Rugged Metal

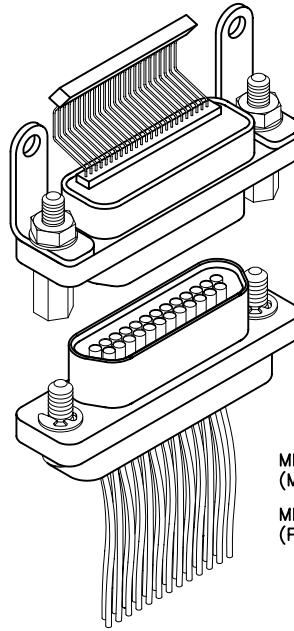
MM

Rugged Plastic

MN

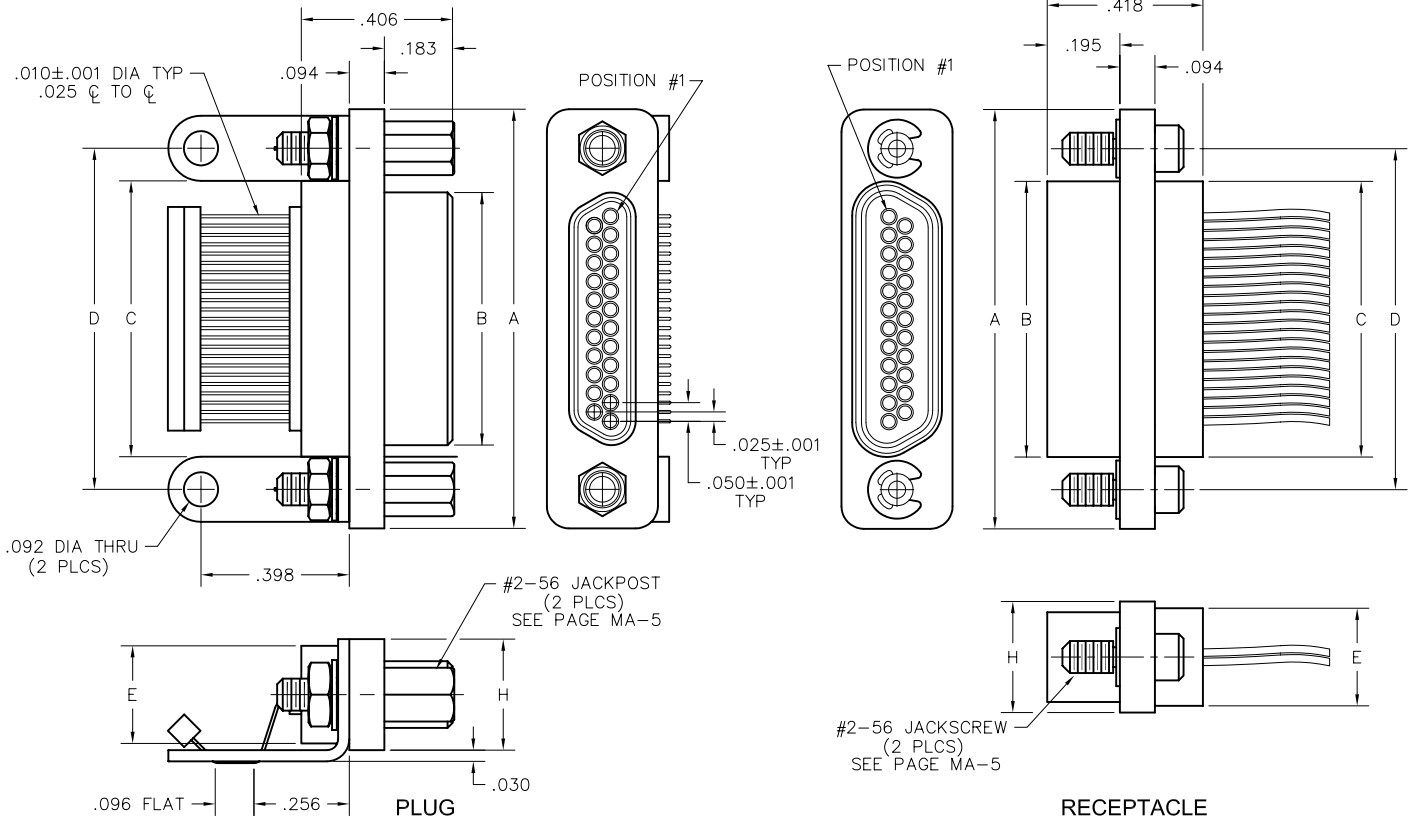
MM-212-025-175-320S
(METAL)

MN-211-025-175-320S
(PLASTIC)



MM-222-025-261-41WQ
(METAL)

MN-221-025-261-41WQ
(PLASTIC)



SIZE	CONTACT ROWS	DIMENSIONS							
		A	B		C	D	E	H	HARDWARE
			PLUG MAX	RCPT MAX					
9	2	.775	.334	.400	.390	.565	.270	.298	#2-56 UNC THD (.092 DIA THRU)
15		.925	.484	.550	.540	.715			
21		1.075	.634	.700	.690	.865			
25		1.175	.734	.800	.790	.965			
31		1.325	.884	.950	.940	1.115			
37		1.475	1.034	1.100	1.090	1.265			
51*		1.825	1.384	1.450	1.440	1.615			

* = 51 POSITION CONNECTORS ARE AVAILABLE IN METAL ONLY.

PLUG: MM-212-025-175-320S
RECEPTACLE: MM-222-025-261-41WQ
PLUG: MN-211-025-175-320S
RECEPTACLE: MN-221-025-261-41WQ
 XX-XXX-XXX-XXX-XXXX-XXX

PLUG		RECEPTACLE	
SERIES			
MM .050" Rugged Metal PC Board Mount, SMT Connector	MN .050" Rugged Plastic PC Board Mount, SMT Connector (MM & MN mate with MK, ML, MM, MN receptacles)	MM .050" Rugged Metal I/O Connector	MN .050" Rugged Plastic I/O Connector (MM & MN mate with MK, ML, MM, MN plugs)
BODY			
2 2-Row (Sizes 9 thru 51 ^{***})		2 2-Row (Sizes 9 thru 51 ^{***})	
BODY STYLE:		BODY STYLE:	
1 Plug, straight, with ears		2 Receptacle, straight, with ears	
BODY MATERIAL:		BODY MATERIAL:	
1 Polyphenylene Sulfide (MN only)		1 Polyphenylene Sulfide (MN only)	
2 Polyphenylene Sulfide with electroless nickel shell		2 Polyphenylene Sulfide with electroless nickel shell	
3 Polyphenylene Sulfide with electrodeposited cadmium shell <input checked="" type="checkbox"/>		3 Polyphenylene Sulfide with electrodeposited cadmium shell <input checked="" type="checkbox"/>	
4 Polyphenylene Sulfide with hard anodized black shell		4 Polyphenylene Sulfide with hard anodized black shell	
5 Polyphenylene Sulfide with stainless steel shell		5 Polyphenylene Sulfide with stainless steel shell	
SIZE			
XXX 009, 015, 021, 025, 031, 037, 051 ^{***}		XXX 009, 015, 021, 025, 031, 037, 051 ^{***}	
CONTACTS			
TYPE CONTACTS/TERMINATIONS:		TYPE CONTACTS/TERMINATIONS:	
17 Pin, Surface Mount		21 Socket, straight, solder cup	
		24 Socket, straight, .500" pigtails (.018 dia)	
		25 Socket, straight, 1.000" pigtails (.018 dia)	
		26 Socket, straight, crimped wire	
PLATING OPTIONS:		PLATING OPTIONS:	
5 50 μ" Au contacts; Sn/Pb alloy terminations <input checked="" type="checkbox"/>		1 50 μ" Au contacts (crimp wire)	
8 50 μ" Au contacts; Sn plated terminations		3 50 μ" Au contacts; 10 μ" Au terminations (solder cup, pigtail)	
		5 50 μ" Au contacts; Sn/Pb alloy terminations (pigtail) <input checked="" type="checkbox"/>	
		7 50 μ" Au contacts; SAC305 terminations (pigtail)	
HARDWARE			
STYLE OF HARDWARE:		STYLE OF HARDWARE:	
00 None		00 None	
32 Two fixed jacknut assemblies with mounting bracket		22 Two fixed jacknut assemblies	
46 Two turning jackscrews, allen head, captivated** with mounting bracket		41 Two turning jackscrews, allen head, retaining ring	
		42 Two long turning jackscrews, allen head, retaining ring	
		43 Two turning jackscrews, slot head, retaining ring	
		44 Two long turning jackscrews, slot head, retaining ring	
		45 Two turning jackscrews, allen head, captivated**	
POLARIZATION / WIRING:		POLARIZATION / WIRING	
0R Reverse Body Polarization		00 None	
0S Standard Body Polarization		XX For wiring codes, see page MA-3 & MA-4	
OPTIONS			
		900 Interfacial sealing gasket	

** = Captive hardware is factory installed and non-removable.
 *** = 51 position connectors are available in metal only (non Mil-Spec interface).
 = Option not RoHS compliant