



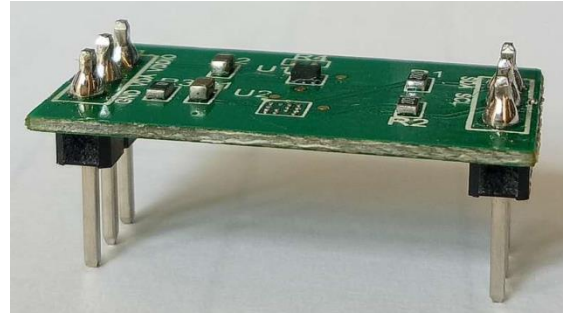
MMC3630KJ-B Prototyping Board

MMC3630KJ -B

GENERAL DESCRIPTION

The MMC3630KJ-B provides a convenient and easy way to evaluate and prototype with the MMC3630KJ three axes magnetic sensor. The magnetic sensor and passive components needed for operations are SMT mounted on the board. Communication, power and ground pins of the MMC3630KJ SMT device are brought out to standard 0.10 inch on center connections on the sides of the prototyping board. Wires can either be soldered directly to the prototyping board or DIP pins can be used with widely available breadboard kits.

For complete performance specifications of the MMC3630KJ refer to the MMC3630KJ datasheet.

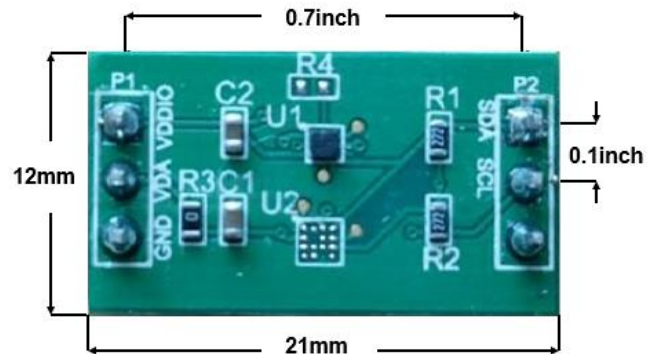


MMC3630KJ-B

PIN DESCRIPTION

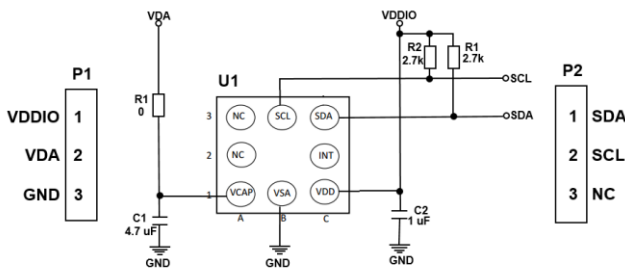
| Pin | Name | Description |
|------|-------|--------------------|
| P1-1 | VDDIO | I2C Supply Voltage |
| P1-2 | VDD3V | Power |
| P1-3 | GND | Ground |
| P2-1 | SDA | I2C SDA |
| P2-2 | SCL | I2C SCL |
| P2-3 | NC | NOT CONNECTED |

PCB OUTLINE AND CONNECTION DIMENSIONS



MMC3630KJ-B

SCHEMATIC OF THE MMC3630KJ-B



MMC3630KJ-B

Information furnished by MEMSIC is believed to be accurate and reliable. However, no responsibility is assumed by MEMSIC for its use, nor for any infringements of patents or other rights of third parties, which may result from its use. No license is granted by implication or otherwise under any patent or patent rights of MEMSIC.

MEMSIC, Inc.
 One Technology Drive, Suite 325, Andover, MA, 01810, USA
 Tel: +1 978 738 0900 Fax: +1 978 738 0196
 www.memsic.com