

# PowerFilm<sup>®</sup>

## SOLAR

MADE IN THE USA

## Electronic Component Solar Panels

### Classic Application Series

The Classic Application Series offer a new opportunity to solve the old problem of limited power for wireless electronics designed for portable and remote applications. Classic Application panels are lightweight, paper thin, and durable.

Their ultra-thin profile enables them to be easily integrated into devices for solar recharging or for direct power. Panels have been specifically developed to recharge a variety of common battery sizes. These panels do not have a UV-stabilized surface, but are suitable for intermittent outdoor use.

Are you looking for a custom Electronic Component Solar Panel? We offer custom sizes, voltages, encapsulations and substrates.

Contact us at [www.powerfilmsolar.com](http://www.powerfilmsolar.com) to learn more.

#### ONP1.2-12x24

##### Electrical Specifications:

###### Full Sun

Power: 4mW  
Operating Voltage: 1.2V  
Operating Current: 3.3mA

###### 1/4 Sun

Power: 0.9mW  
Operating Voltage: 1.2V  
Operating Current: 0.7mA

##### All Levels

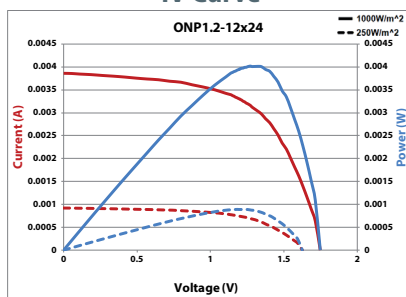
Average Voc: 1.6V  
Maximum Voc: 1.9V  
Isc: 4.3mA

##### Physical Specifications:

Dimensions:  
24.0 x 12.0 (mm)  
0.94 x 0.47 (in)  
Weight: 0.003oz / 0.09g



IV Curve



#### ONP1.2-37x54

##### Electrical Specifications:

###### Full Sun

Power: 70mW  
Operating Voltage: 1.2V  
Operating Current: 50.8mA

###### 1/4 Sun

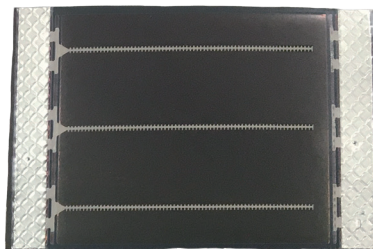
Power: 13.7mW  
Operating Voltage: 1.2V  
Operating Current: 11.4mA

##### All Levels

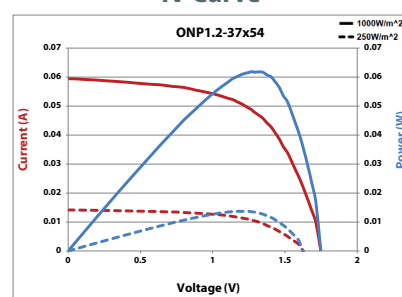
Average Voc: 1.6V  
Maximum Voc: 1.9V  
Isc: 66mA

##### Physical Specifications:

Dimensions:  
54.0 x 36.5 (mm)  
2.13 x 1.44 (in)  
Weight: 0.02oz / 0.58g



IV Curve



# PowerFilm<sup>®</sup>

## SOLAR

MADE IN THE USA

### ONP2.4-15x94



#### Electrical Specifications:

##### Full Sun

Power: 45mW  
 Operating Voltage: 2.4V  
 Operating Current: 18.6mA

##### 1/4 Sun

Power: 10.1mW  
 Operating Voltage: 2.4V  
 Operating Current: 4.2mA

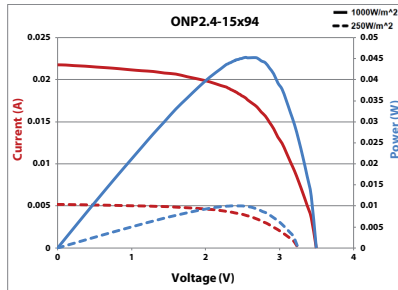
#### All Levels

Average Voc: 3.2V  
 Maximum Voc: 3.7V  
 Isc: 24.2mA

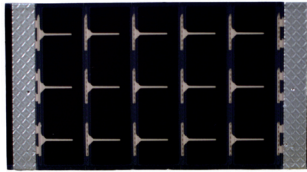
#### Physical Specifications:

Dimensions:  
 94.0 x 14.6 (mm)  
 3.70 x 0.57 (in)  
 Weight: 0.01oz / 0.40g

IV Curve



### SP3-37



#### Electrical Specifications:

##### Full Sun

Power: 66mW  
 Operating Voltage: 3.0V  
 Operating Current: 22mA

##### 1/4 Sun

Power: 15mW  
 Operating Voltage: 3.0V  
 Operating Current: 5.0mA

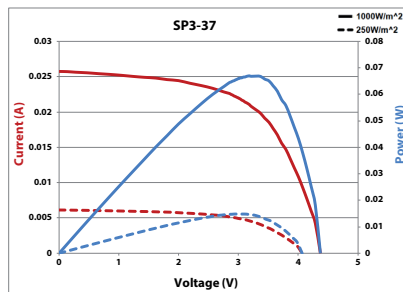
#### All Levels

Average Voc: 4.1V  
 Maximum Voc: 4.6V  
 Isc: 28.0mA

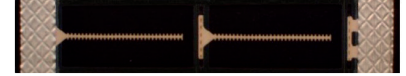
#### Physical Specifications:

Dimensions:  
 64.0 x 36.5 (mm)  
 2.52 x 1.44 (in)  
 Weight: 0.03oz / 0.85g

IV Curve



### MPT2.4-21



#### Electrical Specifications:

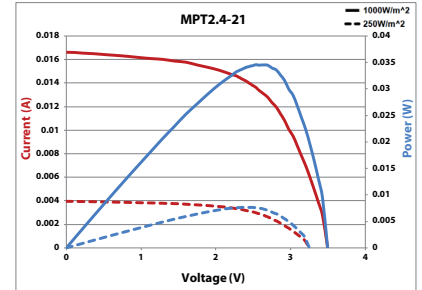
##### Full Sun

Power: 34mW  
 Operating Voltage: 2.4V  
 Operating Current: 14.2mA

##### 1/4 Sun

Power: 7.7mW  
 Operating Voltage: 2.4V  
 Operating Current: 3.2mA

IV Curve



#### All Levels

Average Voc: 3.2V  
 Maximum Voc: 3.7V  
 Isc: 18.3mA

#### Physical Specifications:

Dimensions:  
 54.0 x 20.9 (mm)  
 2.13 x 0.82 (in)  
 Weight: 0.02oz / 0.40g

### MP3-25



#### Electrical Specifications:

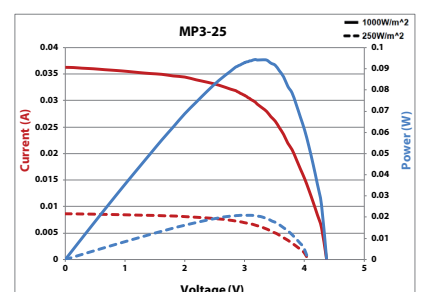
##### Full Sun

Power: 93mW  
 Operating Voltage: 3.0V  
 Operating Current: 31mA

##### 1/4 Sun

Power: 21mW  
 Operating Voltage: 3.0V  
 Operating Current: 7.0mA

IV Curve



#### All Levels

Average Voc: 4.1V  
 Maximum Voc: 4.6V  
 Isc: 35mA

#### Physical Specifications:

Dimensions:  
 114.0 x 24.0 (mm)  
 4.49 x 0.94 (in)  
 Weight: 0.03oz / 0.85g

# PowerFilm<sup>®</sup>

## SOLAR

MADE IN THE USA

### MP3-37

#### Electrical Specifications:

##### Full Sun

Power: 150mW  
Operating Voltage: 3.0V  
Operating Current: 50mA

##### 1/4 Sun

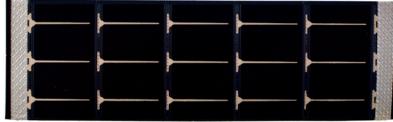
Power: 34mW  
Operating Voltage: 3.0V  
Operating Current: 11.3mA

#### All Levels

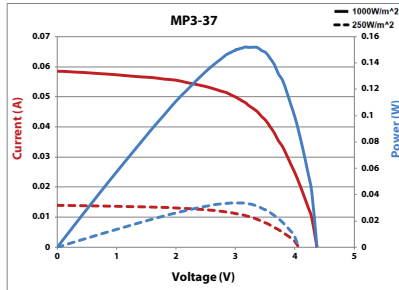
Average Voc: 4.1V  
Maximum Voc: 4.6V  
Isc: 63mA

#### Physical Specifications:

Dimensions:  
114.0 x 36.5 (mm)  
4.49 x 1.44 (in)  
Weight: 0.04oz / 1.13g



IV Curve



### MPT3.6-75

#### Electrical Specifications:

##### Full Sun

Power: 180mW  
Operating Voltage: 3.6V  
Operating Current: 50mA

##### 1/4 Sun

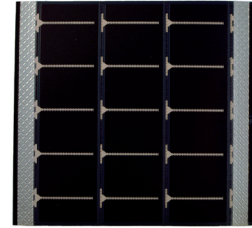
Power: 41mW  
Operating Voltage: 3.6V  
Operating Current: 11.3mA

#### All Levels

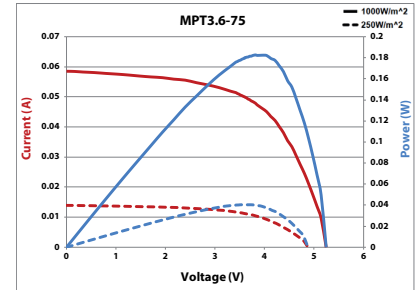
Average Voc: 4.9V  
Maximum Voc: 5.5V  
Isc: 64mA

#### Physical Specifications:

Dimensions:  
74.0 x 73.0 (mm)  
2.91 x 2.87 (in)  
Weight: 0.06oz / 1.70g



IV Curve



### MPT3.6-150

#### Electrical Specifications:

##### Full Sun

Power: 360mW  
Operating Voltage: 3.6V  
Operating Current: 100mA

##### 1/4 Sun

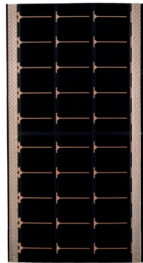
Power: 81mW  
Operating Voltage: 3.6V  
Operating Current: 22.5mA

#### All Levels

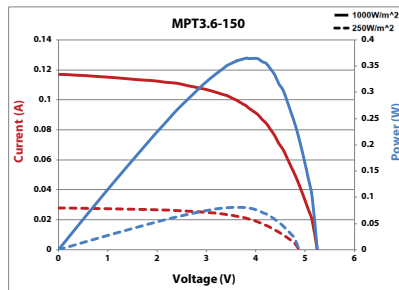
Average Voc: 4.9V  
Maximum Voc: 5.5V  
Isc: 128mA

#### Physical Specifications:

Dimensions:  
74.0 x 146.0 (mm)  
2.91 x 5.75 (in)  
Weight: 0.10oz / 2.83g



IV Curve



### SP4.2-37

#### Electrical Specifications:

##### Full Sun

Power: 92mW  
Operating Voltage: 4.2V  
Operating Current: 22mA

##### 1/4 Sun

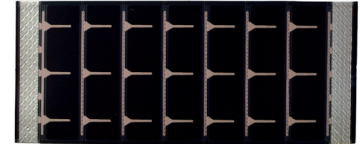
Power: 21mW  
Operating Voltage: 4.2V  
Operating Current: 5.0mA

#### All Levels

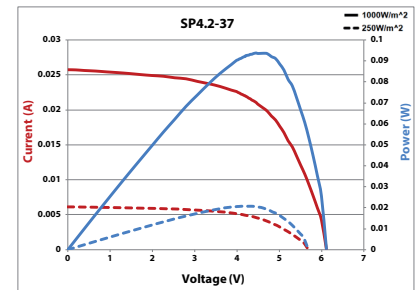
Average Voc: 5.9V  
Maximum Voc: 6.5V  
Isc: 28mA

#### Physical Specifications:

Dimensions:  
84.0 x 36.5 (mm)  
3.31 x 1.44 (in)  
Weight: 0.03oz / 0.85g



IV Curve

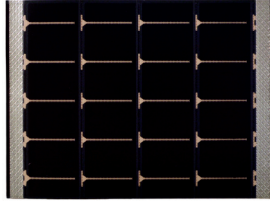


# PowerFilm<sup>®</sup>

## SOLAR

MADE IN THE USA

### MPT4.8-75



#### Electrical Specifications:

##### Full Sun

Power: 240mW  
Operating Voltage: 4.8V  
Operating Current: 50mA

##### 1/4 Sun

Power: 54mW  
Operating Voltage: 4.8V  
Operating Current: 11.3mA

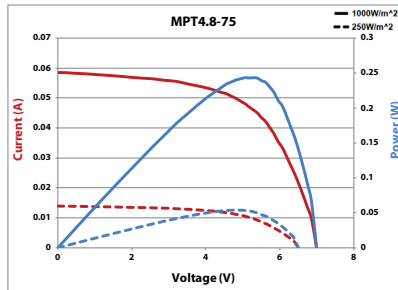
#### All Levels

Average Voc: 6.4V  
Maximum Voc: 7.4V  
Isc: 64mA

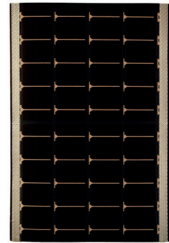
#### Physical Specifications:

Dimensions:  
94.0 x 73.0 (mm)  
3.70 x 2.87 (in)  
Weight: 0.07oz / 1.98g

IV Curve



### MPT4.8-150



#### Electrical Specifications:

##### Full Sun

Power: 480mW  
Operating Voltage: 4.8V  
Operating Current: 100mA

##### 1/4 Sun

Power: 108mW  
Operating Voltage: 4.8V  
Operating Current: 22.5mA

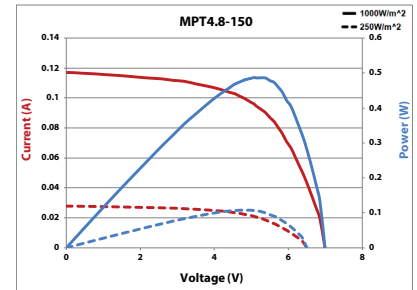
#### All Levels

Average Voc: 6.4V  
Maximum Voc: 7.4V  
Isc: 128mA

#### Physical Specifications:

Dimensions:  
94.0 x 146.0 (mm)  
3.70 x 5.75 (in)  
Weight: 0.10oz / 2.83g

IV Curve



### MPT6-75



#### Electrical Specifications:

##### Full Sun

Power: 300mW  
Operating Voltage: 6.0V  
Operating Current: 50mA

##### 1/4 Sun

Power: 68mW  
Operating Voltage: 6.0V  
Operating Current: 11.3mA

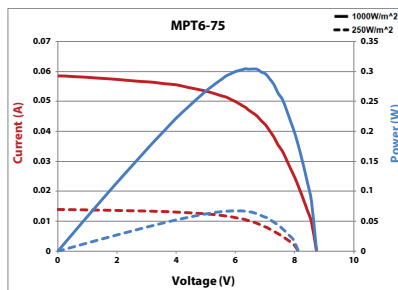
#### All Levels

Average Voc: 8.0V  
Maximum Voc: 9.3V  
Isc: 64mA

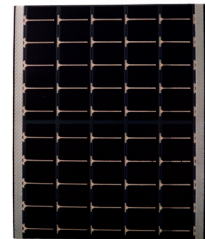
#### Physical Specifications:

Dimensions:  
114.0 x 73.0 (mm)  
4.49 x 2.87 (in)  
Weight: 0.08oz / 2.30g

IV Curve



### MPT6-150



#### Electrical Specifications:

##### Full Sun

Power: 600mW  
Operating Voltage: 6.0V  
Operating Current: 100mA

##### 1/4 Sun

Power: 135mW  
Operating Voltage: 6.0V  
Operating Current: 22.5mA

#### All Levels

Average Voc: 8.0V  
Maximum Voc: 9.3V  
Isc: 128mA

#### Physical Specifications:

Dimensions:  
114.0 x 146.0 (mm)  
4.49 x 5.75 (in)  
Weight: 0.10oz / 2.83g

IV Curve

