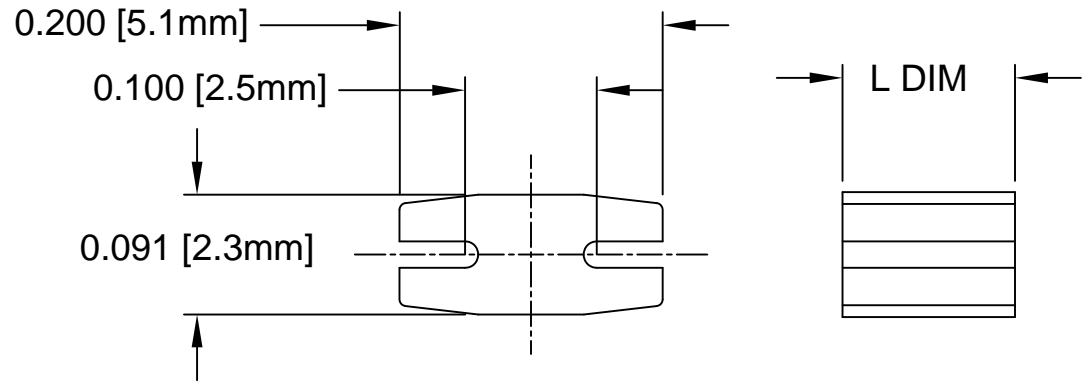



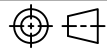
REV.	DESCRIPTION	DATE	APPROVED
A	Engineering Release.	07/11/06	M. C.
B	L DIM Tolerance Update.	10/31/06	M. C.
C	Removed Material Code	05/21/16	J. C.

PART NO.	L DIM ± 0.008	PART NO.	L DIM ± 0.008
MRM2-118	0.118 [3.0mm]	MRM2-492	0.492 [12.5mm]
MRM2-138	0.138 [3.5mm]	MRM2-512	0.512 [13.0mm]
MRM2-157	0.157 [4.0mm]	MRM2-531	0.531 [13.5mm]
MRM2-177	0.177 [4.5mm]	MRM2-551	0.551 [14.0mm]
MRM2-197	0.197 [5.0mm]	MRM2-571	0.571 [14.5mm]
MRM2-217	0.217 [5.5mm]	MRM2-591	0.591 [15.0mm]
MRM2-236	0.236 [6.0mm]	MRM2-610	0.610 [15.5mm]
MRM2-256	0.256 [6.5mm]	MRM2-630	0.630 [16.0mm]
MRM2-276	0.276 [7.0mm]	MRM2-650	0.650 [16.5mm]
MRM2-295	0.295 [7.5mm]	MRM2-669	0.669 [17.0mm]
MRM2-315	0.315 [8.0mm]	MRM2-689	0.689 [17.5mm]
MRM2-335	0.335 [8.5mm]	MRM2-709	0.709 [18.0mm]
MRM2-354	0.354 [9.0mm]	MRM2-728	0.728 [18.5mm]
MRM2-374	0.374 [9.5mm]	MRM2-748	0.748 [19.0mm]
MRM2-394	0.394 [10.0mm]	MRM2-768	0.768 [19.5mm]
MRM2-413	0.413 [10.5mm]	MRM2-787	0.787 [20.0mm]
MRM2-433	0.433 [11.0mm]	MRM2-807	0.807 [20.5mm]
MRM2-453	0.453 [11.5mm]	MRM2-827	0.827 [21.0mm]
MRM2-472	0.472 [12.0mm]		



2. MATERIAL: NYLON 6/6, 94V-0, BLACK.

1. GENERAL SPECIFICATIONS: BIVAR MOLDED COMPONENT SPECIFICATION BV00-E101.

STANDARD TOLERANCE (UNLESS OTHERWISE SPECIFIED)		 4 THOMAS, IRVINE, CA. 92618 TEL: (949) 951-8808 FAX: (949) 951-3974	
DECIMALS	ANGULAR		
.X ± .1	X° ± 1°	 <b>TITLE:</b> MOLDED, SELF-RETAINING LED MOUNT	
.XX ± .01			
.XXX ± .005			
DESIGNED: <b>T. Yin</b>	DATE: <b>07/11/06</b>	<b>PART NO:</b> MRM2-XXX	REVISION: <b>C</b>
CHECKED: <b>M. Chen</b>	DATE: <b>07/11/06</b>	<b>CAGE CODE :</b> 32559	<b>SHEET #</b> 1 OF 1
CAD GENERATED DOCUMENT. DO NOT MEASURE DRAWING.			