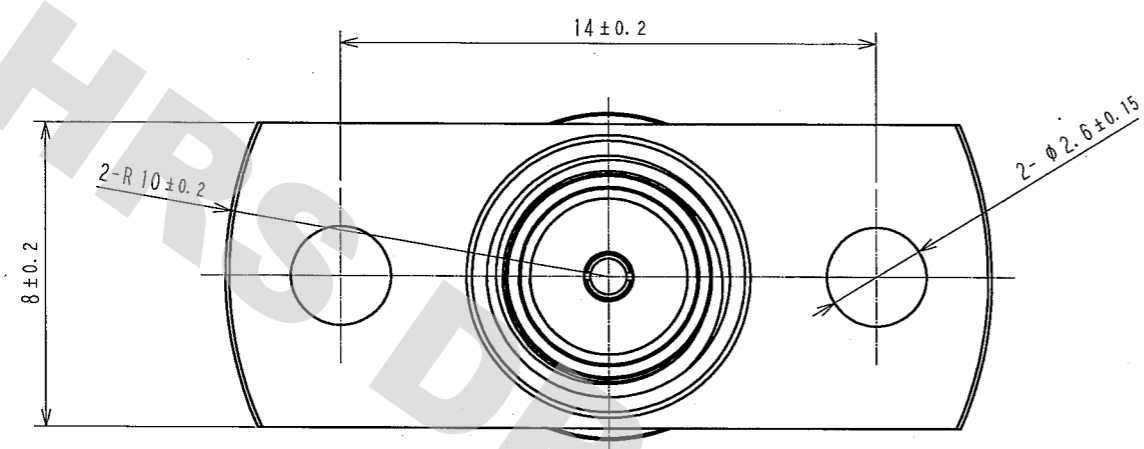
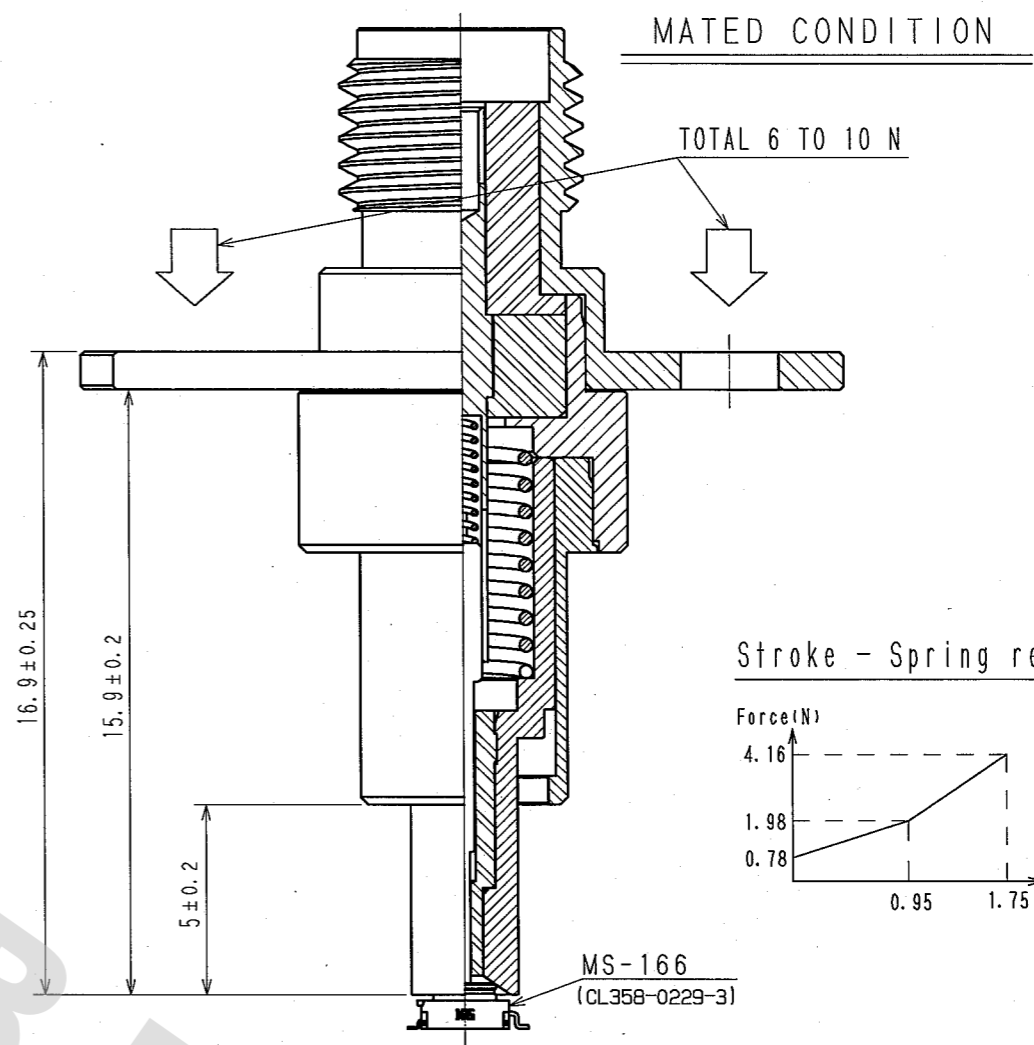
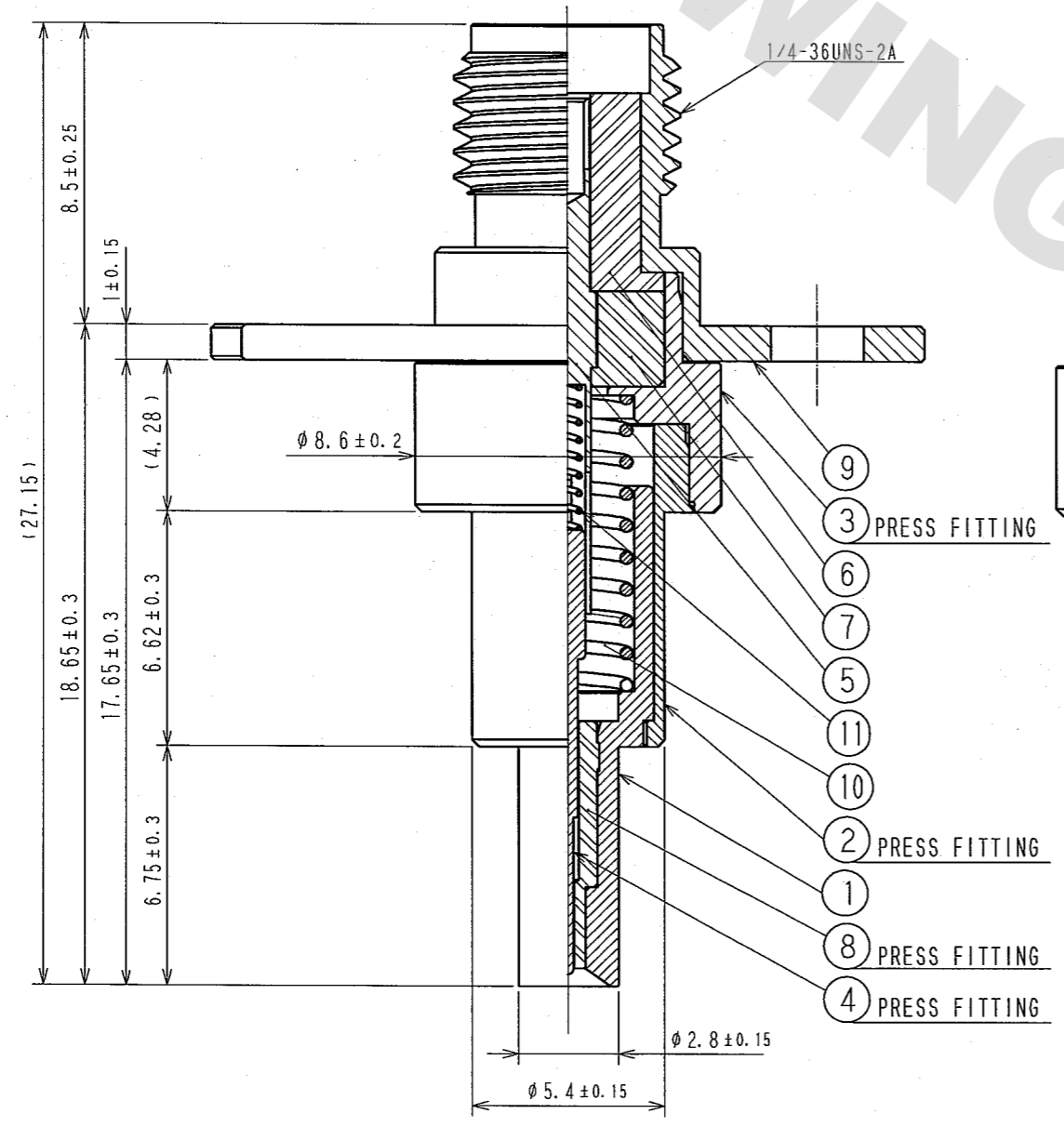


COUNT	DESCRIPTION OF REVISIONS	BY	CHKD	DATE	COUNT	DESCRIPTION OF REVISIONS	BY	CHKD	DATE
△				..	△				..
△				..	△				..
△				..	△				..



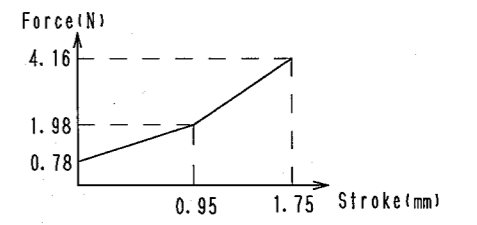
UNMATED CONDITION



MATED CONDITION

TOTAL 6 TO 10 N

Stroke - Spring reaction force



NOTE 1. After the vertical mating of the adapter (MS-166-HRMJ-1) and the receptacle (MS-166) is completed, adjust the fixture stop and the load force to within 6 to 10 N.

NO.	MATERIAL	FINISH, REMARKS	NO.	MATERIAL	FINISH, REMARKS
6	PTFE		11	STAINLESS	GOLD PLATING
5	BERYLLIUM COPPER	GOLD PLATING	10	STAINLESS	
4	BERYLLIUM COPPER	GOLD PLATING	9	STAINLESS	PASSIVATE
3	BERYLLIUM COPPER	GOLD PLATING	8	PTFE	
2	BERYLLIUM COPPER	NICKEL PLATING	7	PTFE	
1	BERYLLIUM COPPER	GOLD PLATING			

CODE NO.(OLD)	DRAWN T. NAKAGAWA '06.09.26	DESIGNED T. Nakagawa '06.09.28	CHECKED T. Ozaki '06.9.29	APPROVED K. Hanomura '06.9.30	RELEASED
SCALE 5:1 UNITS mm	DRAWING NO. EDC3-180640		PART NO. MS-166-HRMJ-1		
	HRS HIROSE ELECTRIC CO., LTD		CODE NO. CL358-0239-7		1/1

DRAWING FOR REFERENCE: This is subject to change without notice
08/11/2012

TO	RFD