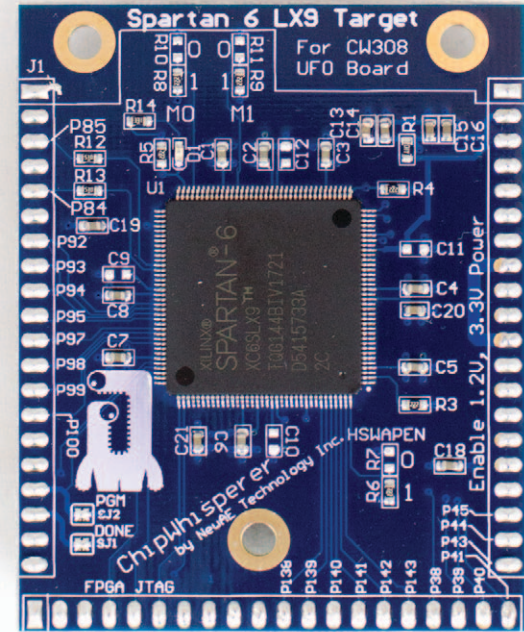




Spartan 6 LX9 UFO Target



The CW308T-S6LX9 target series allows experiments on a low-cost FPGA device. This target board features a Spartan 6 LX9 FPGA in TQFP package. It is ideal for power analysis attacks, clock fault injection, voltage fault injection, and EM fault injection.

Included example runs an AES hardware core and sends/receives data using the standard Simple Serial protocol. This allows direct usage with the ChipWhisperer software.

Note an external JTAG programmer (such as Xilinx Platform Cable USB-II) is required for this target.

CW308 UFO Baseboard REQUIRED for use!
JTAG Programmer REQUIRED for use!

Product Highlights

Xilinx XC6SLX9-2TQG144C supported.

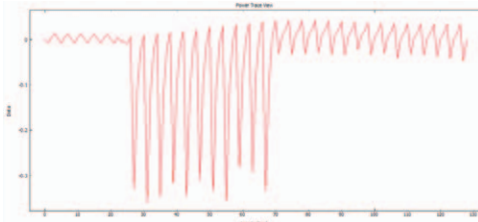
Perform clock and voltage glitching right from ChipWhisperer-Lite or ChipWhisperer-Pro.

Optional SPI flash footprint allows use of board with non-volatile bitstream support.

Test hardware peripherals, FPGA soft-core processors, and unique hardware encryption designs.

Will not give you up, let you down, run around, and desert you. May make you cry.

Example AES implementation provides simple side-channel analysis target to validate measurement toolchain.



Ordering Summary

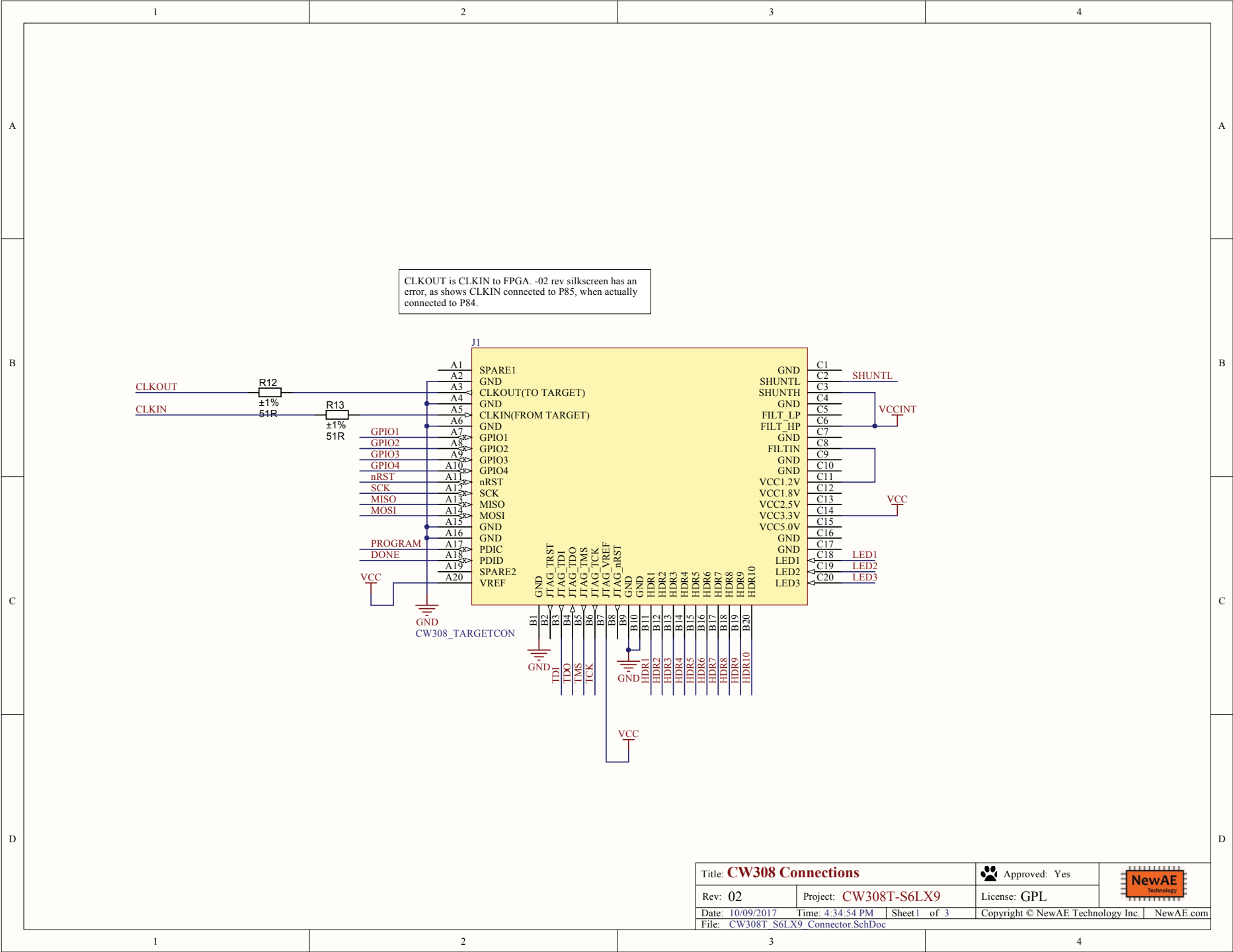
NAE-CW308T-S6LX9 Xilinx XC6SLX9-2TQG144C UFO Target.

Product Links

Full Documentation <https://wiki.newae.com/CW308T-S6LX9>

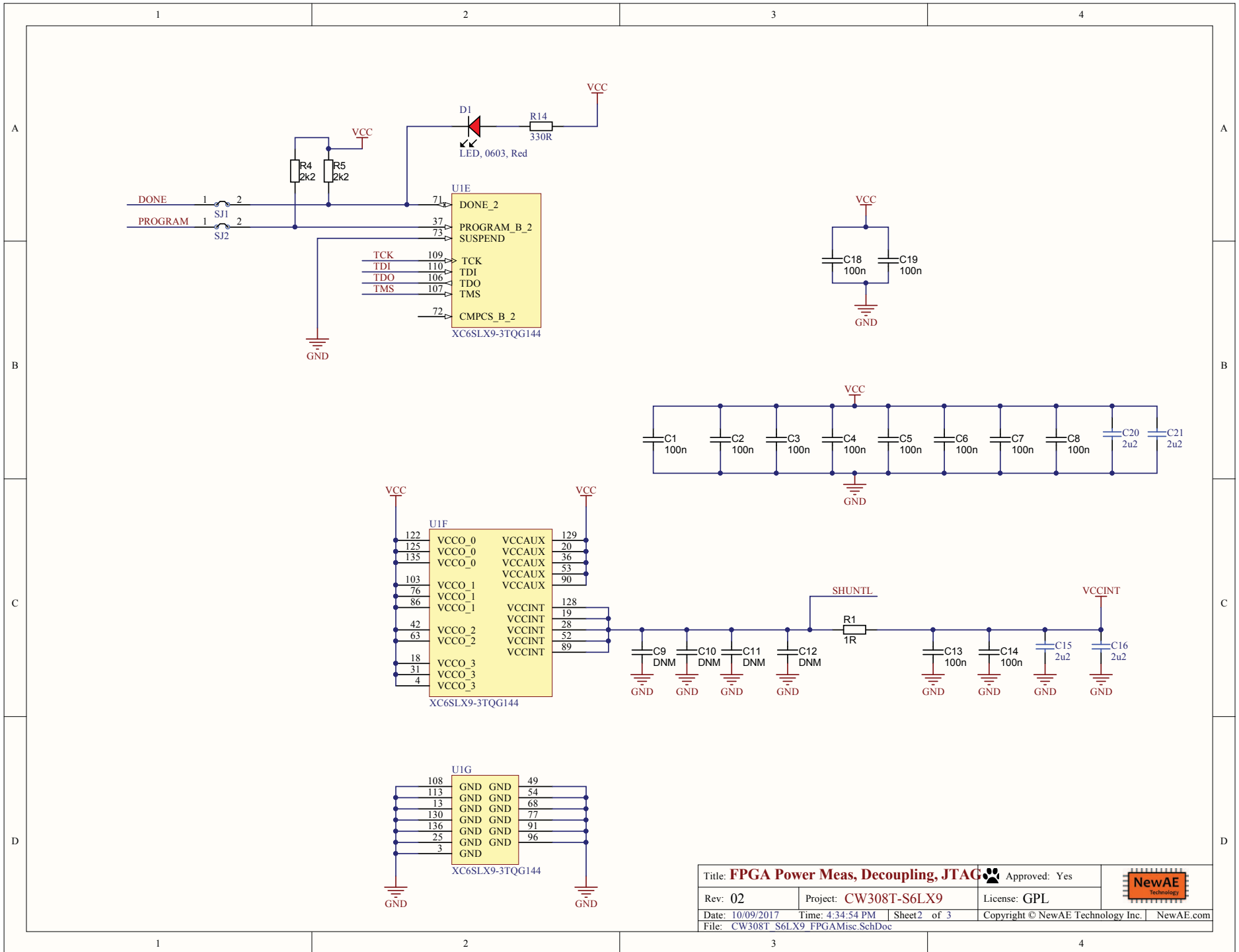
HDL Examples https://github.com/newaetech/chipwhisperer/tree/master/hardware/victims/cw308_ufo_target/spartan6lx9

Schematic



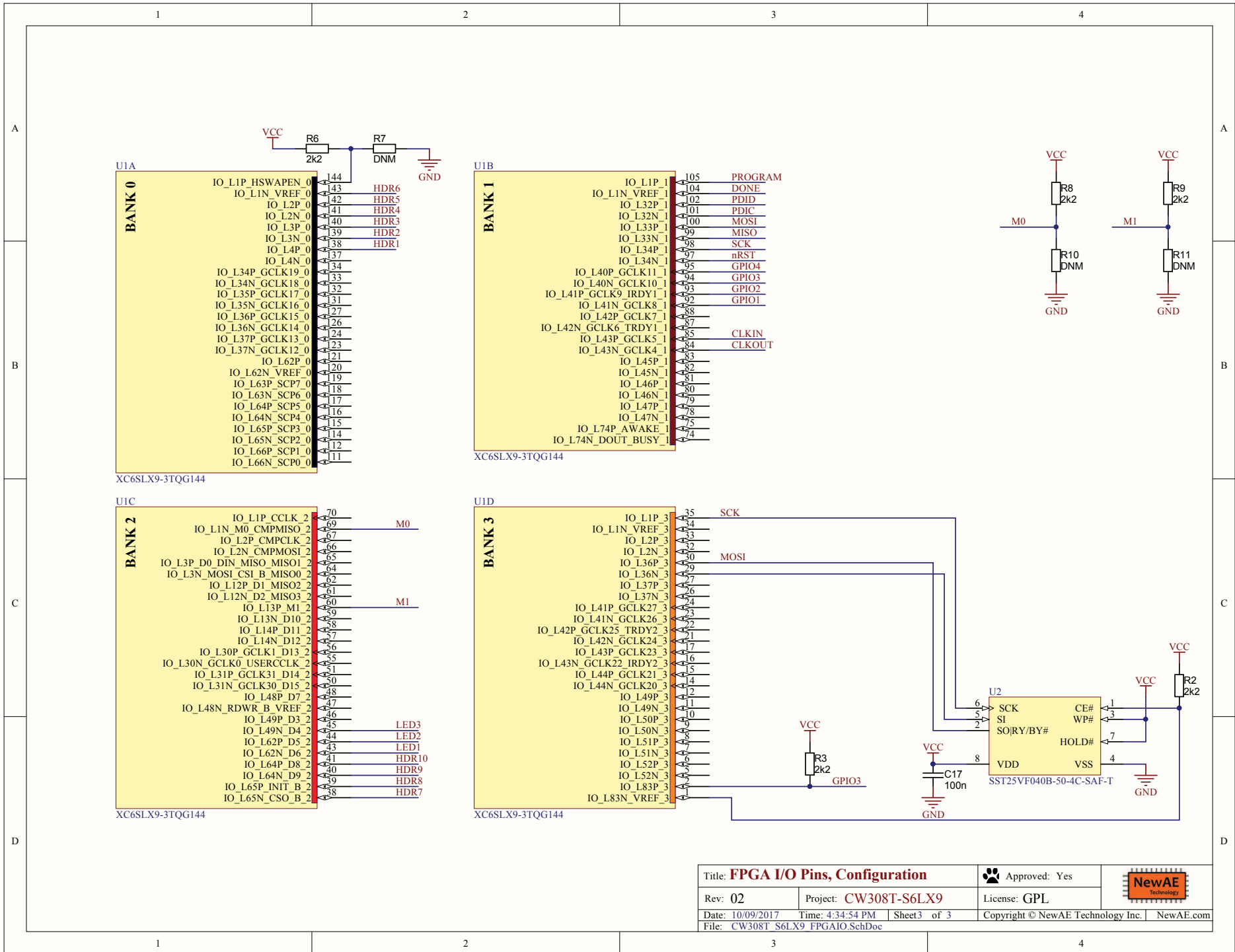
Title: CW308 Connections		Approved: Yes	
Rev: 02	Project: CW308T-S6LX9	License: GPL	
Date: 10/09/2017	Time: 4:34:54 PM	Sheet 1 of 3	Copyright © NewAE Technology Inc. NewAE.com
File: CW308T_S6LX9_Connector.SchDoc			

Schematic



Title: FPGA Power Meas, Decoupling, JTAG		Approved: Yes	
Rev: 02	Project: CW308T-S6LX9	License: GPL	
Date: 10/09/2017	Time: 4:34:54 PM	Sheet2 of 3	Copyright © NewAE Technology Inc. NewAE.com
File: CW308T_S6LX9_FPGAMisc.SchDoc			

Schematic



Title: FPGA I/O Pins, Configuration		Approved: Yes	
Rev: 02	Project: CW308T-S6LX9	License: GPL	
Date: 10/09/2017	Time: 4:34:54 PM	Sheet 3 of 3	Copyright © NewAE Technology Inc. NewAE.com
File: CW308T_S6LX9_FPGAIO.SchDoc			