

| | | | |
|-----------|----------------------------------|----------|---|
| PART NAME | NON-METALLIC ENCLOSURE (STYLE B) | PART No. | NBB-10247 & NBB-10267 & NBB-15247 & NBB-22247 |
|-----------|----------------------------------|----------|---|

MATERIAL:
UL LISTED INDOOR VERSION
 SOLID BODY & COVER _____ ABS/PC BLENDED PLASTIC
 UL94-5VB FLAMMABILITY RATING

CLEAR COVER _____ POLYCARBONATE PLASTIC
 UL94V-0 FLAMMABILITY RATING
 UV STABILIZED

UL LISTED OUTDOOR VERSION
 SOLID BODY & COVER _____ PBT/PC BLENDED PLASTIC
 UL94-5VA FLAMMABILITY RATING
 UV STABILIZED

ABS VERSION
 SOLID BODY & COVER _____ ABS
 UL94-HB FLAMMABILITY RATING

ALL VERSIONS
 GASKET _____ MODIFIED POLYURETHANE

FINISH:
 BODY _____ LIGHT GRAY
 COVER _____ LIGHT GRAY OR CLEAR

LATCHES & HINGES _____ NON-METALLIC
 WALL MOUNTING BRACKETS _____ STAINLESS STEEL

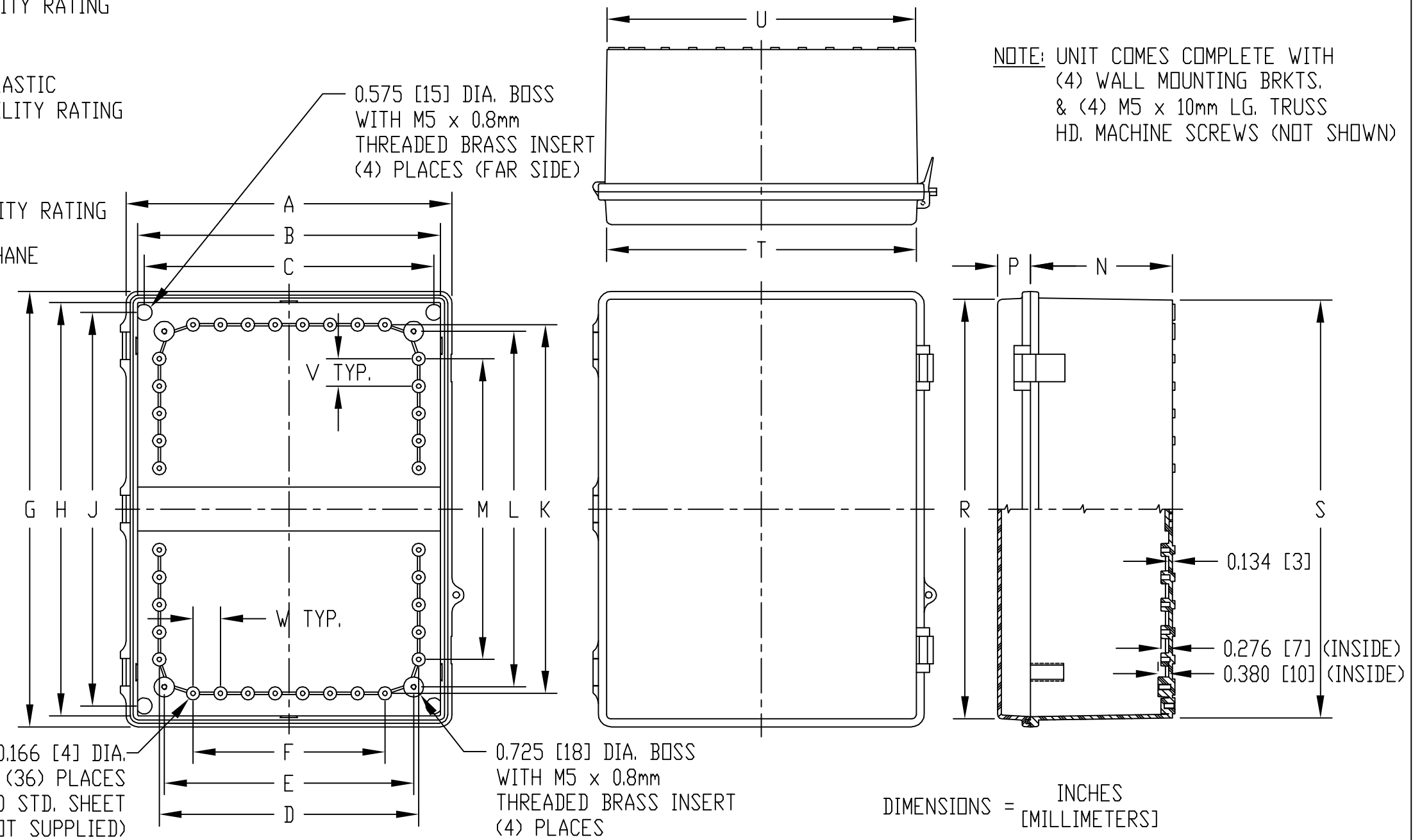
INTERNAL HINGED PANEL MOUNTING BRACKETS, STAINLESS STEEL LOCKING HASP, AIR AND MOISTURE VENTS AND GALVANIZED STEEL INTERNAL PANEL ARE NOT INCLUDED, BUT CAN BE PURCHASED SEPARATELY.

COVER INCLUDES GRAY POLYURETHANE GASKET.

INDUSTRY STANDARDS:
UL LISTED INDOOR VERSION
 UL508 TYPE 1, 2, 3, 3R, 4, 4X INDOOR, 12 & 13
 NEMA TYPE 1, 2, 3, 3R, 4, 4X, 12 & 13
 IEC529-IP65

UL LISTED OUTDOOR VERSION
 UL508 TYPE 1, 2, 3, 3R, 4, 4X, 12 & 13
 NEMA TYPE 1, 2, 3, 3R, 4, 4X, 12 & 13
 IEC529-IP65

ABS VERSION
 NEMA TYPE 1, 2, 3, 3R, 4, 4X, 12 & 13
 IEC529-IP65



VIEW LESS COVER

NOTE: ALL DIMENSIONS HAVE ±0.039 [±1] TOLERANCE UNLESS OTHERWISE SPECIFIED

| | | | | DIMENSIONS | | | | | | | | | | | | | | | | | | | |
|--------------------------|---------------------------|-------------|-------------|--------------|--------------|--------------|-------------|-------------|-------------|--------------|--------------|--------------|--------------|--------------|--------------|-------------|------------|--------------|--------------|--------------|--------------|------------|------------|
| UL LISTED INDOOR VERSION | UL LISTED OUTDOOR VERSION | ABS VERSION | | A | B | C | D | E | F | G | H | J | K | L | M | N | P | R | S | T | U | V | W |
| PART NO. | PART NO. | PART NO. | | | | | | | | | | | | | | | | | | | | | |
| SOLID COVER | CLEAR COVER | SOLID COVER | SOLID COVER | | | | | | | | | | | | | | | | | | | | |
| NBB-10247 | NBB-10267 | NBB-15247 | NBB-22247 | 11.727 [298] | 10.894 [277] | 10.424 [265] | 9.335 [237] | 8.969 [228] | 6.902 [175] | 15.680 [398] | 14.877 [378] | 14.167 [360] | 13.265 [337] | 12.801 [325] | 10.828 [275] | 5.110 [130] | 1.185 [30] | 15.105 [384] | 15.035 [382] | 11.147 [283] | 11.090 [282] | 0.986 [25] | 0.986 [25] |