



COAXIAL

Adapter

NFFL-SF50+

50Ω DC to 18 GHz N-Female to SMA-Female

FEATURES

- Flat response
- Excellent VSWR
- Four hole flange mount



Generic photo used for illustration purposes only

Model No.	NFFL-SF50+
Case Style	DJ1808
Connectors	N-Female to SMA Female

+RoHS Compliant

The +Suffix identifies RoHS Compliance.
See our website for methodologies and qualifications

APPLICATIONS

- Interconnection of RF cables and equipment
- Instrumentation

ELECTRICAL SPECIFICATIONS AT 25°C

Parameter	Frequency (GHz)	Min.	Typ.	Max.	Units
Frequency Range	-	DC	-	18	GHz
Insertion Loss	DC - 18	-	0.01	-	dB
VSWR	DC - 8	-	-	1.15	:1
	DC - 12.4	-	-	1.20	
	DC - 18	-	-	1.30	

ABSOLUTE MAXIMUM RATINGS

Parameter	Ratings
Operating Temperature	-45°C to +100°C
Storage Temperature	-55°C to +100°C

Permanent damage may occur if any of these limits are exceeded.

REV. B
ECO-016681
NFFL-SF50+
MCL NY
230419





COAXIAL

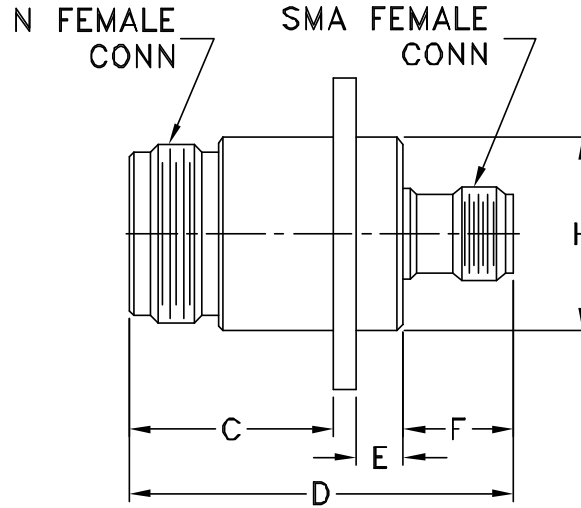
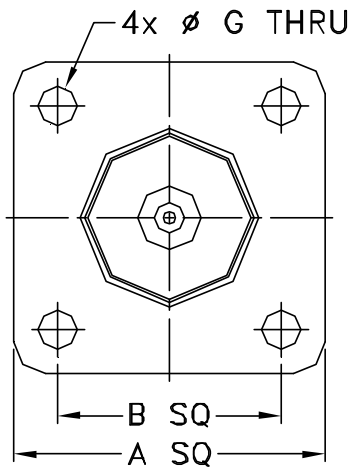
Adapter

NFFL-SF50+

Mini-Circuits

50Ω DC to 18 GHz N-Female to SMA-Female

OUTLINE DRAWING



OUTLINE DIMENSIONS (Inch/mm)

A	B	C	D	E
1.00	.718	.657	1.240	.157
25.4	18.24	16.7	31.5	4.0
F	G	H		wt
.350	.126	.620		grams
8.9	3.2	15.75		36.0